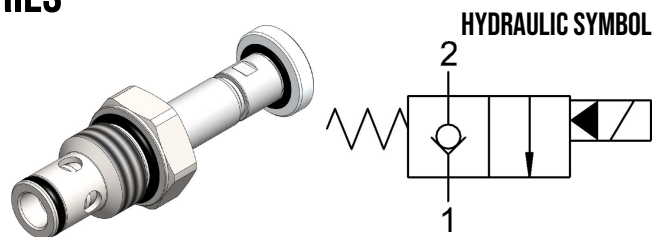


SVSO.S10 VALVE SERIES

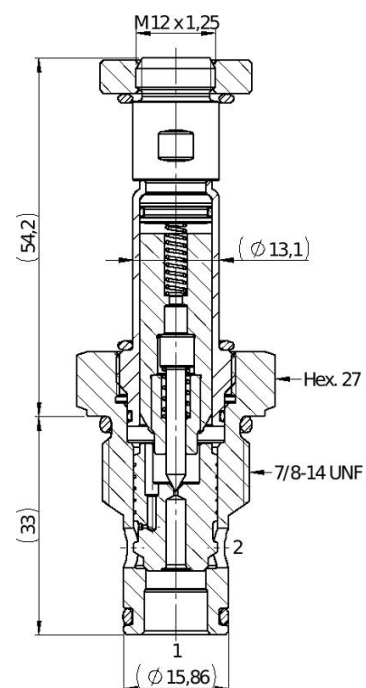
SAE Cartridge - 350 bar
NC Single Lock Pilot Operated
Poppet type



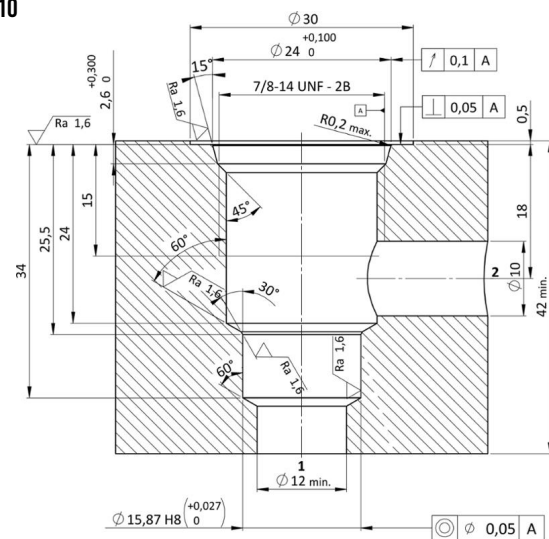
DESCRIPTION

A solenoid valve operated, 2-way 2-positions, normally closed, piloted poppet type, screw-in cartridge valve. Typically used as a blocking or load holding device for high pressure circuits. When the coil is de-energized, the SVSO.S10 acts as check valve allowing free flow from 1 to 2, while blocking from 2 to 1. When the coil is energized the poppet lifts and opens the 2 to 1 flow path. In this operation mode, flow from 1 to 2 is severely restricted. The rigid design using a 1-piece body contributes to minimize the effect of eccentricities in cavity and provides great reliability.

CROSS SECTION



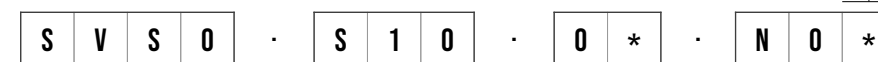
CAVITY SAE10



TECHNICAL DATA

MAXIMUM OPERATING PRESSURE	350 bar
MAXIMUM FLOW	80 l/min
MAXIMUM INTERNAL LEAKAGE	0,25 cm ³ / min @ 350 bar
EXTERNAL COMPONENT TREATMENT	Zn/Fe - standard (96h) Zn/Ni (720h) (Upon customer request)
SWITCH ON TIME	30 ms
SWITCH OFF TIME	50 ms
O-RING TEMPERATURE RANGE	-30° C to 110° C (standard sealing NBR - BUNA - N) -35° C to 140° C (HNBR - Upon customer request) -23° C to 225° C (FKM - Upon customer request)
OIL TEMPERATURE RANGE	-30° C to 110° C
FLUIDS	Mineral - based or synthetics with lubricating properties
VISCOSITIES	7,4 to 420 cSt
MINIMUM PULL-IN VOLTAGE	85% of nominal
FILTRATION	20/18/15 ISO 4406 (maximum filtration admitted)
ORIENTATION	No restrictions
INSTALLATION TORQUE	65-75 Nm Hex.27
TECH. SPEC. FOR CHARACTERIZATION	see page 700
OIL TESTING CONDITIONS	ISO VG 46 cSt
SEAL KIT CODE	SK.032 and SK.027 (coil) (standard sealing NBR-BUNA-N)
COIL	18W (for more details see page 603 - 613)
WEIGHT	0,139 kg

ORDERING CODE



VALVE BASIC CODE

SIZE

7/8-14 UNF with Ø15,86 nose size

MARKING

0 = Standard factory marking.
Customized marking can be done upon request.

FILTRATION

Model code	Type of filter
N	No filter

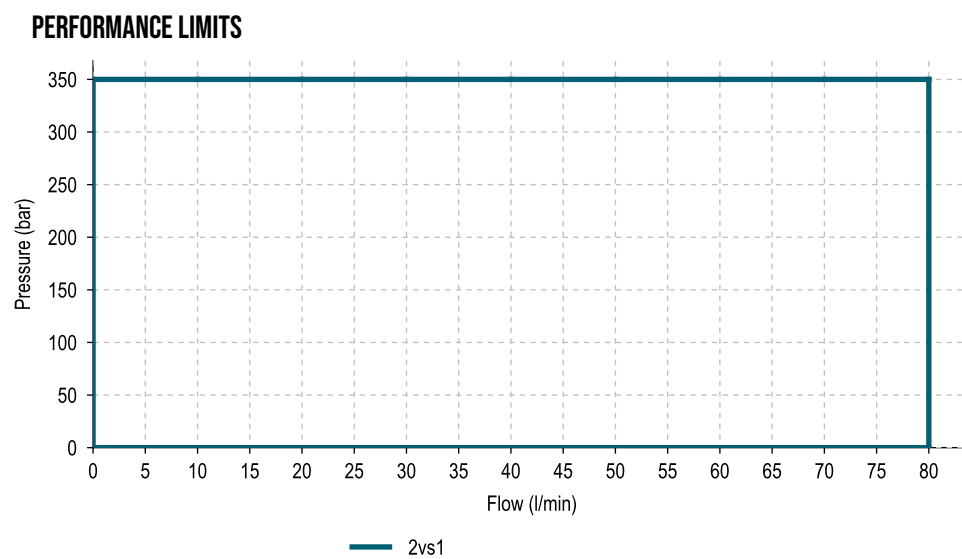
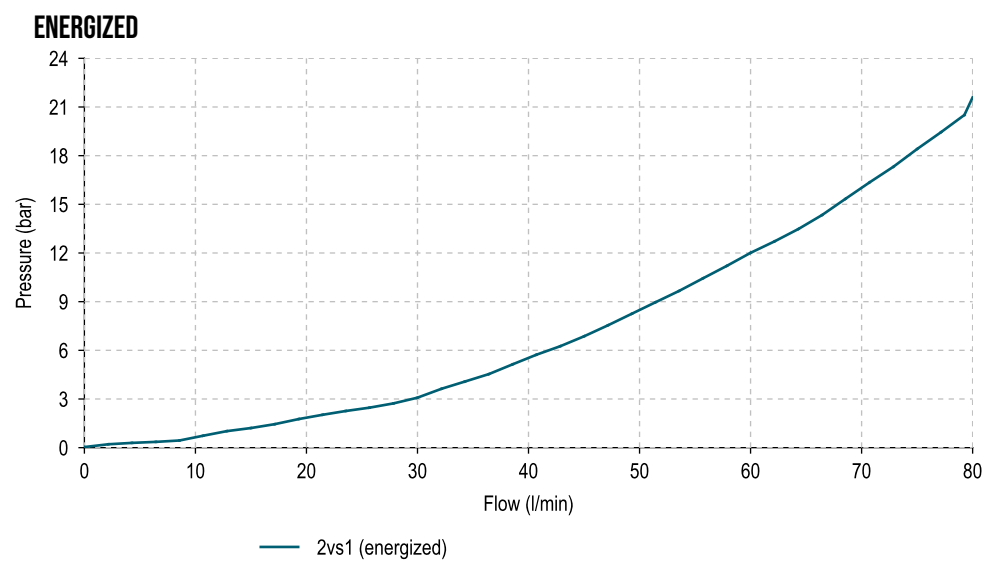
NOTE
Customized nut can be selected

MANUAL OVERRIDE

Model code	Type of override
0	No override
1	Screw
2	Push and Twist
6	Pull and Hold
9	Pull and Hold with screw 10-32 UNF
A	Pull and Hold with screw M8 (max. operating pressure: 300 bar)

SVSO.S10 GRAPHS

The performance chart illustrates flow handling capacity 2 to 1 (energized).
p,Q curve is recorded at Toil = 40°C and 46 cSt.



NOTE

The performance chart illustrates flow handling capacity 2 to 1 (energized).
p,Q curve is recorded at Toil = 40°C and 46 cSt.