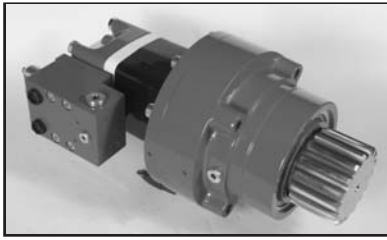
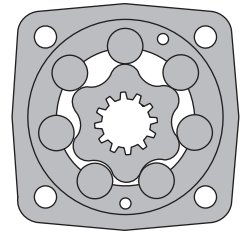


# HYDRAULIC MOTOR-BRAKES SW500B350V



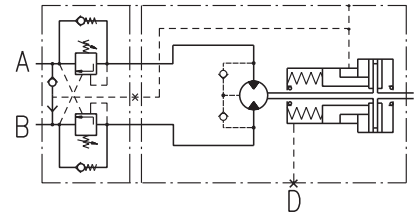
## APPLICATION

- » Wheel drives
- » Conveyors
- » Rotators
- » Positioners
- » Winches
- » Swing drives
- » Door openers



## CONTENTS

Specification data .....	28
Dimensions and mounting .....	29
Permissible shaft loads .....	29
Function diagrams .....	30



## SPECIFICATION DATA

Type		SW500B350V
Displacement, in <sup>3</sup> /rev [cm <sup>3</sup> /rev]		29 [475,3]
Max. Speed, RPM	Cont.	16
	Int.*	25
Max. Torque, lb-in [daNm]	Cont.	7260 [82]
	Int.*	8420 [95]
Max. Output, HP [kW]	Cont.	1.3 [0,9]
	Int.*	3.3 [2,4]
Max. Pressure Drop, PSI [bar]	Cont.	1800 [125]
	Int.*	2100 [145]
Max. Oil Flow, GPM [lpm]	Cont.	2 [8]
	Int.*	3 [12]
Max. Return Pressure without Drain Line or Max. Pressure in Drain Line, PSI [bar]		1450 [100]
Min. Starting Torque, lb-in [daNm]	At max. press. drop Cont.	6400 [72]
	At max. press. drop Int.*	6650 [75]
Min. Speed**, RPM		5
Static Torque for the Brake***, lb-in [daNm]		14 515 [164]
Release Pressure ±10%, PSI [bar]	initial	363...406 [25...28]
	full	449.6 [31]
Max. Steering Pressure, PSI [bar]		3553 [245]
Max. Pressure in Drain Space for the Brake, PSI [bar]		7 [0,5]
Pilot Ratio for the Valve		4,25:1

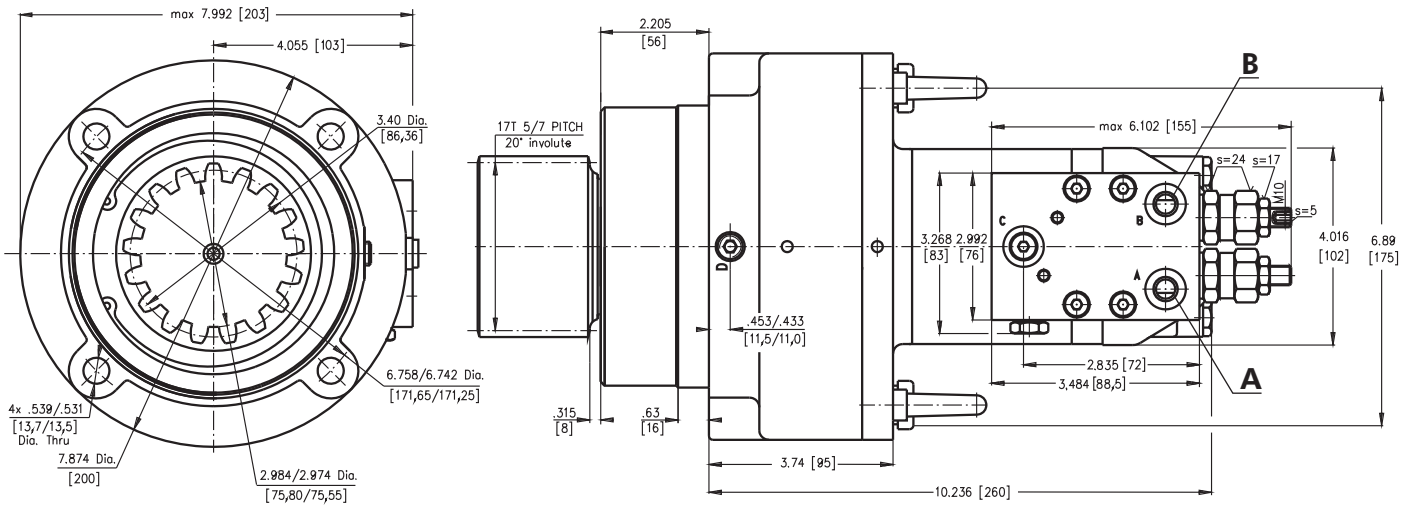
\* Intermittent operation: the permissible values may occur for max. 10% of every minute.

\*\* For speeds of 5 RPM lower than given, consult factory or your regional manager.

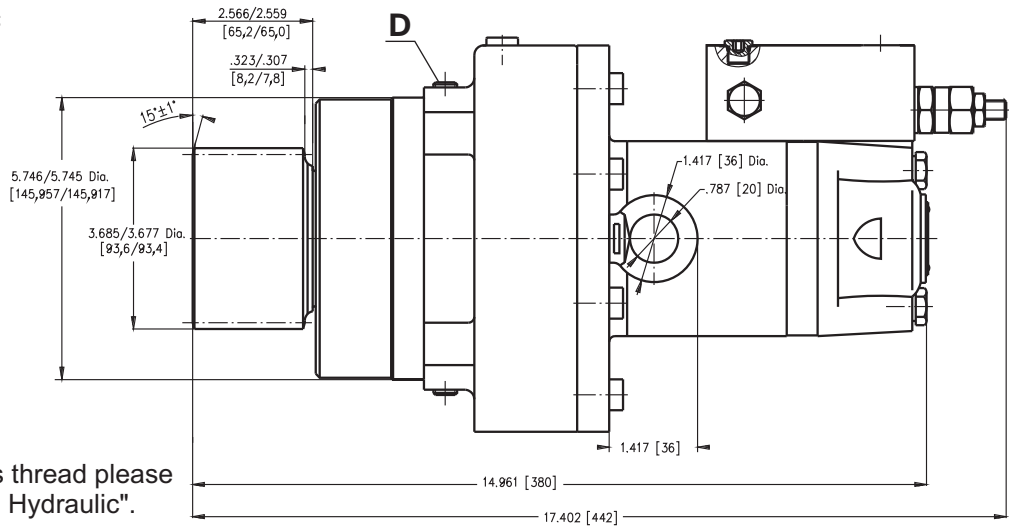
\*\*\* Static torque is obtained at working pressure - 0 PSI [0 bar].

Space is filled with 7.63±1.22 in<sup>3</sup> [125±20 cm<sup>3</sup>] mineral oil HLP (DIN 51524) or HM (ISO 6743/4).

**DIMENSIONS AND MOUNTING**



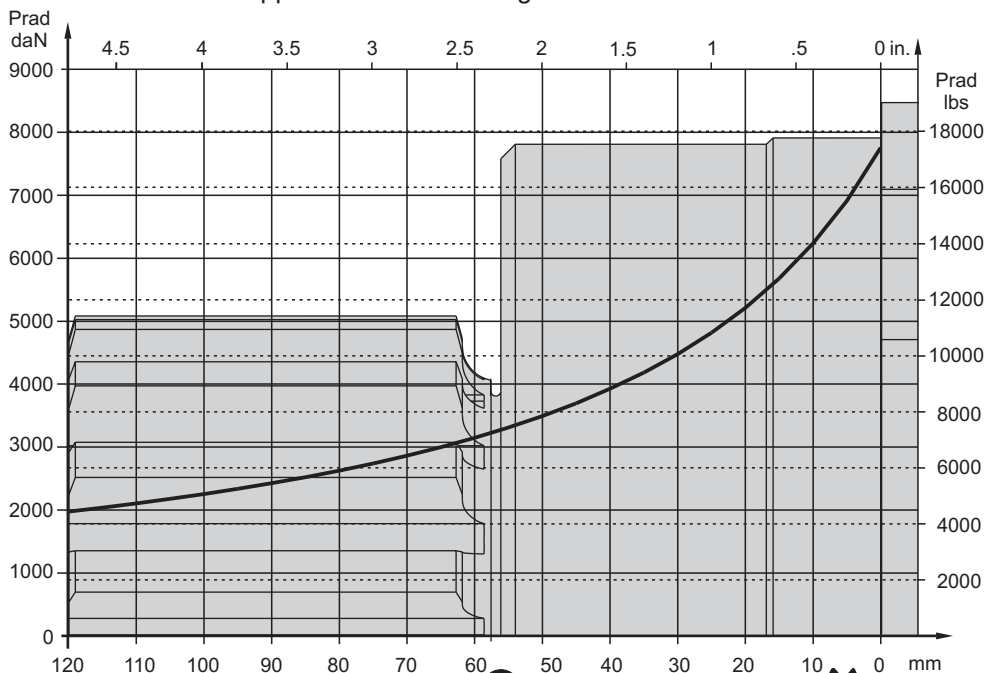
**A,B:** 7/16-20 UNF  
**D :** 1/4-18 NPTF



**Note:** For different port's thread please contact with "M+S Hydraulic".

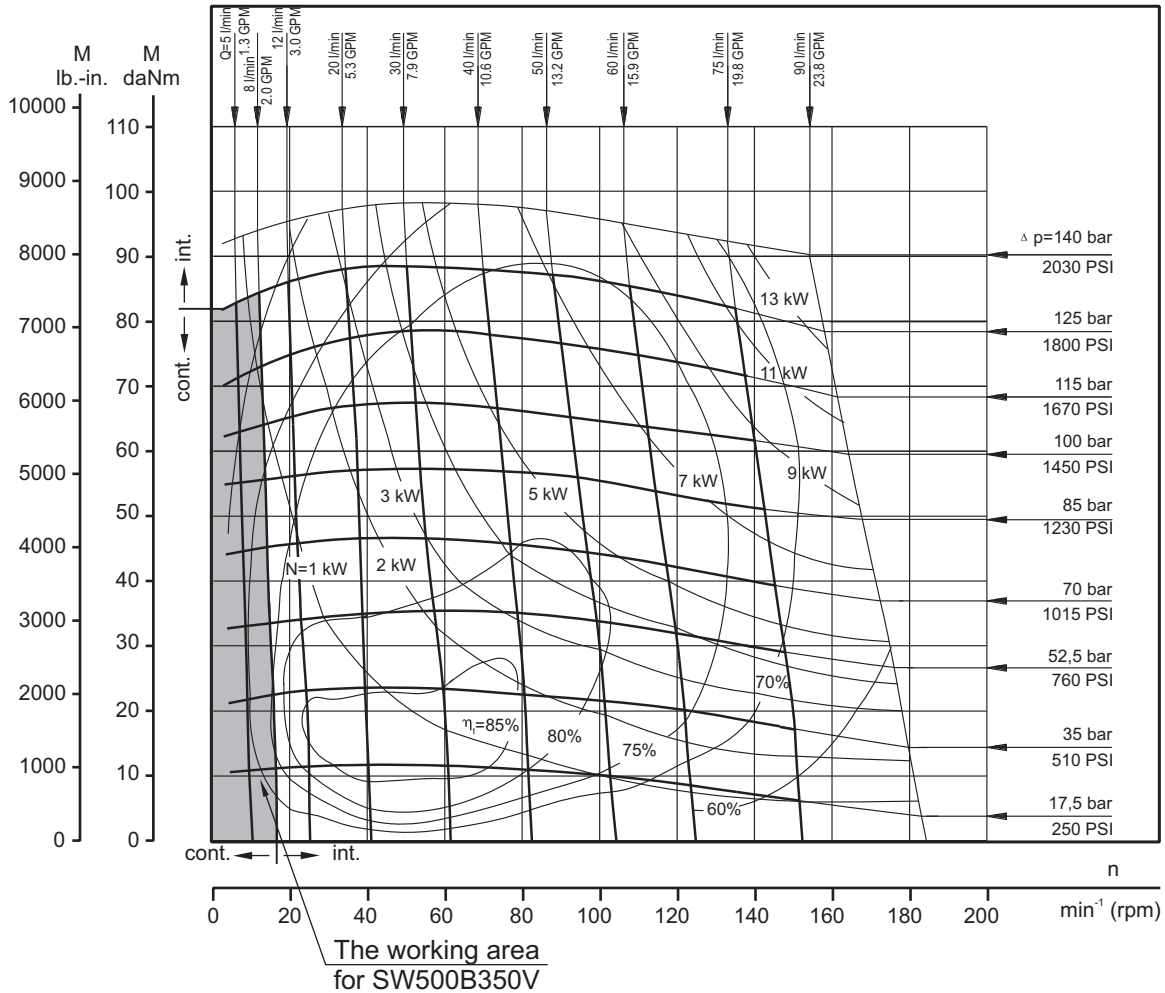
**PERMISSIBLE SHAFT LOADS**

The curve applies to a B10 bearing life of 3000 hours at 40 RPM.



**FUNCTION DIAGRAMS**

**SW 500**



**ORDER CODE**

1	2	3	4	5	6	7	8
S	W	500	B	350	V		

- Pos.1 - Type  
**S** - Motor MLHS
- Pos.2 - Displacement code
- Pos.3 - Brake
- Pos.4 - Brake Type

- Pos.5 - Shaft Extension  
omit - 17T PITCH splined
- Pos.6 - Valve
- Pos.7 - Special Features (see page 55)
- Pos.8 - Design Series  
omit - Factory specified

The motor-brakes are mangano-phosphatized as standard.