

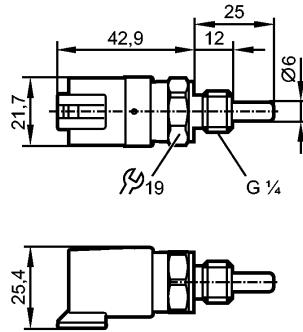


# TM6101

TM-025KCBR14- /DE/



Temperature sensors



## Product characteristics

Temperature sensor for connection to a control monitor with a max. operating voltage of 32 V

DEUTSCH connector

Process connection: G 1/4

Installation length EL: 25 mm

Measuring range: -40...150 °C / -40...302 °F

Measuring element: 1 x Pt 1000, to DIN EN 60751, class A

## Application

Application liquids and gases

Pressure rating [bar] 400

## Electrical data

Protection class III

## Measuring / setting range

Measuring range -40...150 °C -40...302 °F

## Accuracy / deviations

Accuracy  $\pm (0.15 K + 0.002 \times |t|)$

## Reaction times

Dynamic response T05 / T09 [s] 1 / 3 \*)

## Environment

Ambient temperature [°C] -25...80

Storage temperature [°C] -40...100

Protection IP 68 / IP 69K

## Tests / approvals

Shock resistance DIN EN 60068-2-27 50 g (11 ms)

Vibration resistance DIN EN 60068-2-6 20 g (10...2000 Hz)

MTTF [Years] 22831

UL approval number K017

## Mechanical data

Process connection G 1/4

Materials (wetted parts) stainless steel 316L / 1.4404; sealing ring: FKM

Probe diameter [mm] 6

Probe length L [mm] 12

Installation length EL [mm] 25

Housing materials stainless steel 316L / 1.4404; PPS; FKM

Weight [kg] 0.078

## Electrical connection



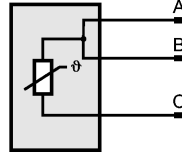
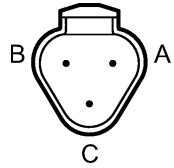
# TM6101

TM-025KCBR14- /DE/

Temperature sensors

Connection DEUTSCH connector DT04-3P

### Wiring



### Accessories

Accessories (included) Sealing ring

### Remarks

Remarks	cULus - Class 2 source required *) according to DIN EN 60751 The values for accuracy apply to flowing water.
---------	--

Pack quantity	[piece]	1
---------------	---------	---