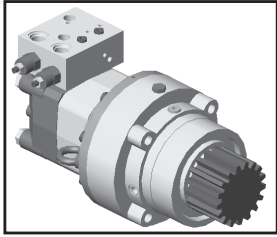
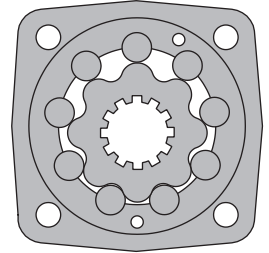


HYDRAULIC MOTOR-BRAKES TW500B350...V

APPLICATION



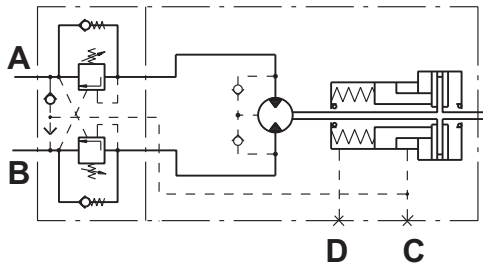
- » Wheel drives
- » Conveyors
- » Rotators
- » Positioners
- » Winches
- » Swing drives
- » Door openers



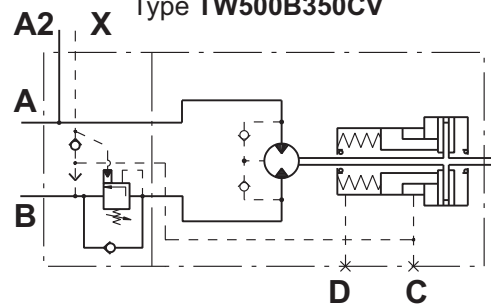
CONTENTS

Specification data	31
Dimensions and mounting	32
Function diagrams	33
Order code	33

Motor-Brake
Type TW500B350V



Motor-Brake
Type TW500B350CV



SPECIFICATION DATA

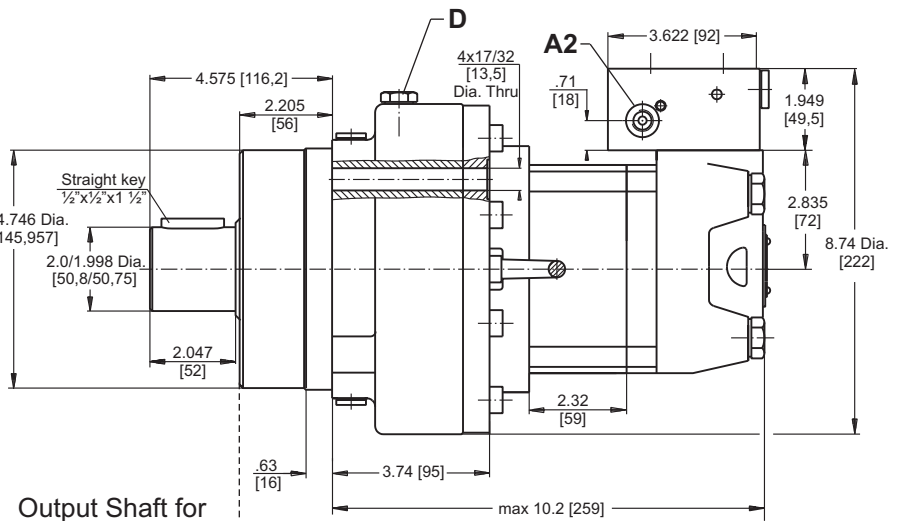
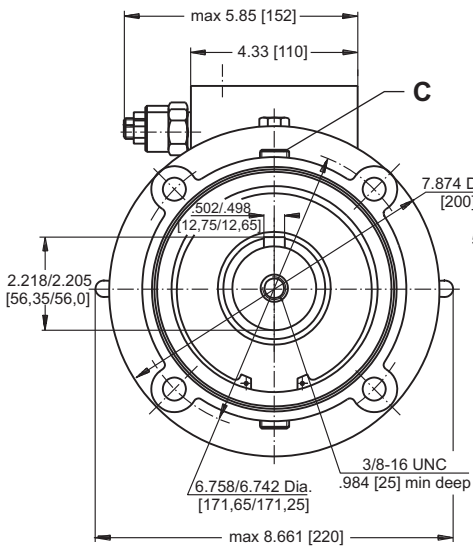
Type		TW500B350...
Displacement, in ³ /rev [cm ³ /rev]		29 [475]
Max. Speed, RPM	Cont.	40
	Int.*	60
Max. Torque, lb-in [daNm]	Cont.	10 000 [114]
	Int.*	12 000 [135]
Max. Output, HP [kW]	Cont.	5.4 [4,1]
	Int.*	9.39 [7,0]
Max. Pressure Drop, PSI [bar]	Cont.	2500 [170]
	Int.*	2900 [200]
Max. Oil Flow, GPM [lpm]	Cont.	5.3 [20]
	Int.*	9.2 [35]
Max. Return Pressure without Drain Line or Max. Pressure in Drain Line, PSI [bar]		1088 [75]
Min. Starting Torque, lb-in [daNm]	At max. press. drop Cont.	8400 [95]
	At max. press. drop Int.*	9940 [112]
Min. Speed**, RPM		5
Static Torque for the Brake***, lb-in [daNm]		14 515 [164]
Release Pressure ±10%, PSI [bar]	initial	326...400 [22,5...27,5]
	full	406...493 [28...34]
Max. Steering Pressure, PSI [bar]		3553 [245]
Max. Pressure in Drain Space for the Brake, PSI [bar]		7 [0,5]
Pilot Ratio for the Valve		4,25:1

* Intermittent operation: the permissible values may occur for max. 10% of every minute.

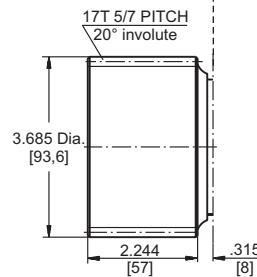
** For speeds of 5 RPM lower than given, consult factory or your regional manager.

*** Static torque is obtained at working pressure - 0 bar [0 PSI].

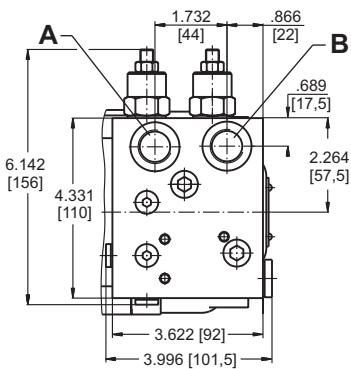
DIMENSIONS AND MOUNTING



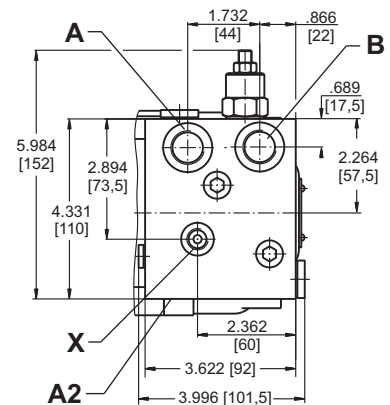
Output Shaft for TW500B350V



Valve Block for TW500B350V



Valve Block for TW500B350CV



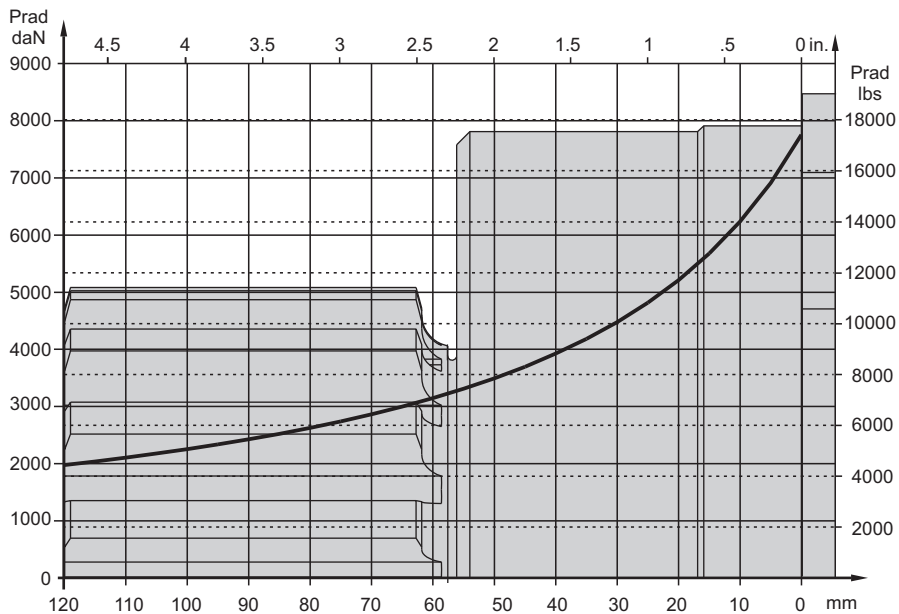
- A, B : 2x7/8-14 UNF, .65 [17,5] deep
- D : 7/16-20 UNF
- C : G1/4
- A2, X: 7/16-18 UNF, .475 [12] deep

Note: For different port's thread please contact with "M+S Hydraulic".



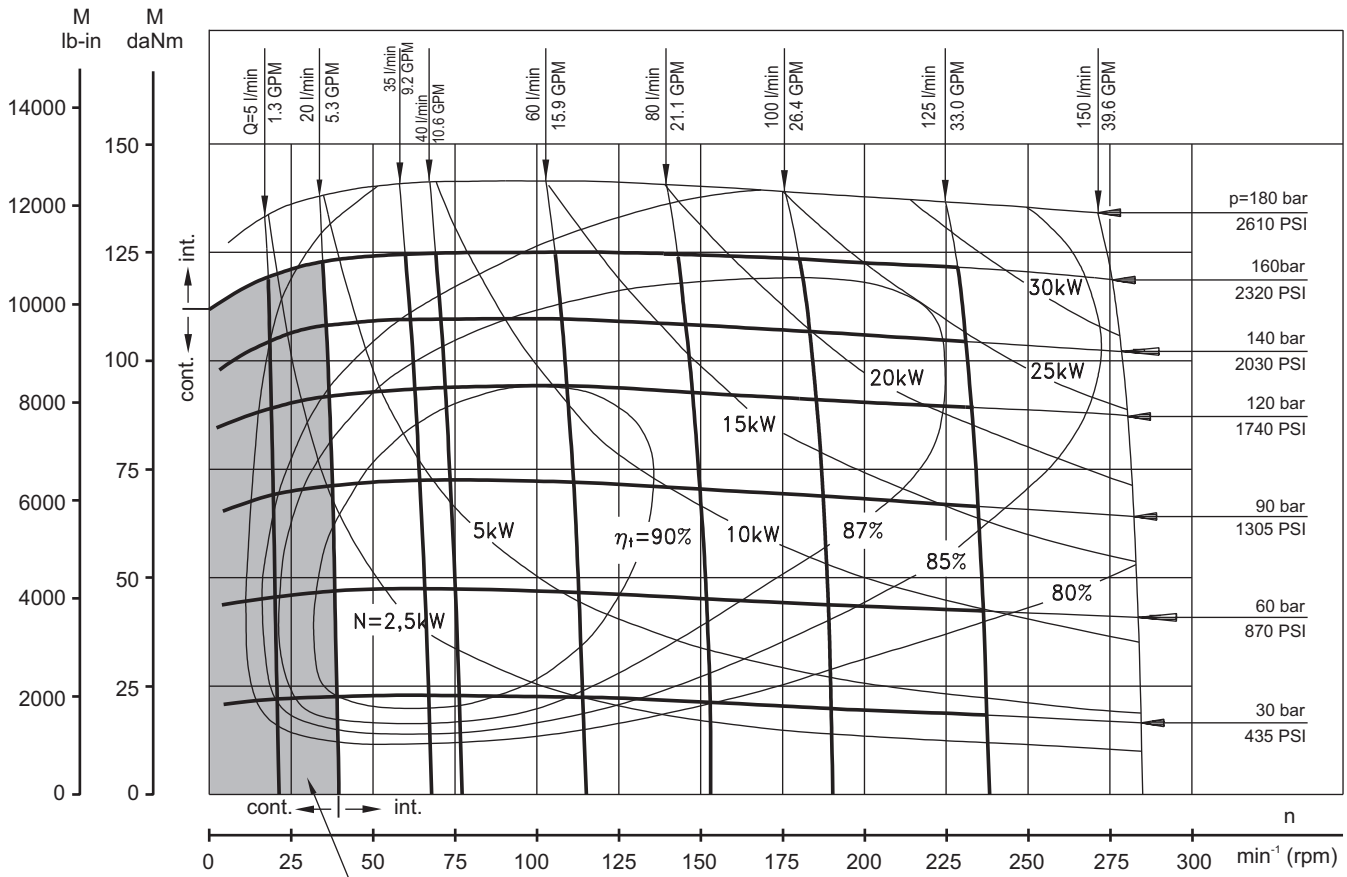
PERMISSIBLE SHAFT LOADS

The curve applies to a B10 bearing life of 3000 hours at 40 RPM.



FUNCTION DIAGRAMS

TW 500



The working area
for TW500B350V

ORDER CODE

1	2	3	4	5	6	7	8
T	W 500	B	350		V		

- Pos.1 - Type
T - Motor MLHT
- Pos.2 - Displacement code
- Pos.3 - Brake
- Pos.4 - Brake Type

- Pos.5 - Shaft Extension*
omit - 17T 5/7 pitch 20° involute
C - Straight key 1/2"x1/2"x1 1/2"
- Pos.6 - Valve
- Pos.7 - Special Features (see page 55)
- Pos.8 - Design Series
omit - Factory specified

The motor-brakes are manganophosphatized as standard.