

# Multi-circuit gauge isolator valve UOPF 4

$p_{max}$  35 MPa | WK 450 472



## DATA SHEET - OPERATION MANUAL

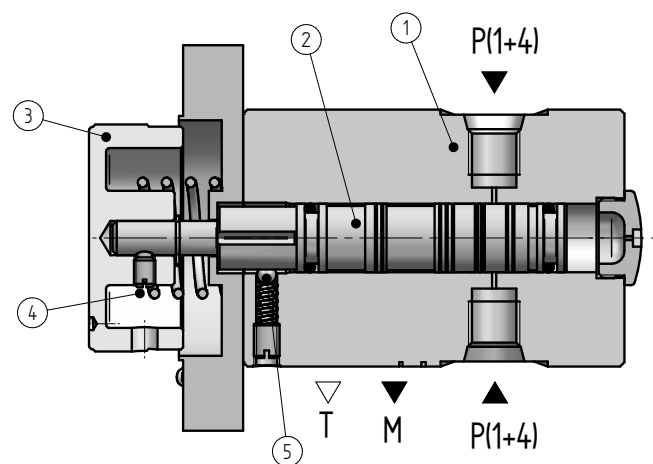
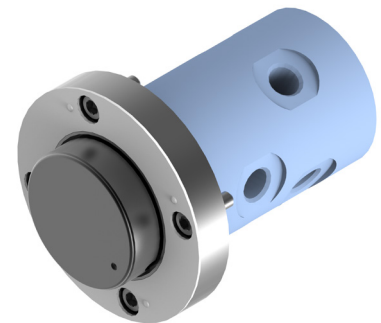
### APPLICATION

Multi-circuit gauge isolator valve type **UOPF4...** is used to measure pressure in 1 to 4 points using a single gauge.

### DESCRIPTION OF OPERATION

The spool **2** moves in a drilling of the housing **1** to connect the selected test points to the gauge. In initial position the knob **3** coupled with the spool is retracted by means of the spring **4** and connections between the test points and the gauge M are cut off.

The gauge is thus unloaded through connecting to the tank T. Pressure indication is achieved by pressing the rotary knob in an axial direction, when the correct rotary position has been selected. The built-in locking mechanism **5** holds this position and the selected test point is connected to the gauge. Releasing the rotary knob returns the spool to its initial position and connects the pressure gauge to the tank. The selection of test points should be done in unloaded position. Pressure test in any circuit is not affected by pressure in other circuits.

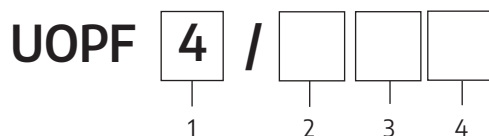


### TECHNICAL PARAMETERS

hydraulic fluid	mineral oil
required fluid cleanliness	ISO 4406 class 20/18/15
nominal fluid viscosity	37 mm <sup>2</sup> /s at temperature 55 °C
viscosity range	2,8 ÷ 380 mm <sup>2</sup> /s
fluid temperature range (in tank)	max. -20 ÷ 55 °C; recommended 40 ÷ 55 °C
ambient temperature range	-20 ÷ 70 °C
max. working pressure	35 MPa
test points	1 ÷ 4
weight	2,1 kg

assembly and operation requirements at [www.operating-conditions.ponar.pl](http://www.operating-conditions.ponar.pl)

### HOW TO ORDER



#### 1 isolator type

4 test points = 4

#### 2 series number

series 00 = 00

(00-09) - connection and installation dimensions unchanged

#### 3 thread type

metric ISO thread = Ø

BSP thread = R

#### 4 further requirements = \*

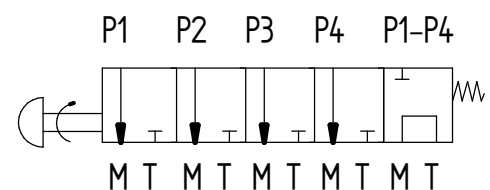
(to be agreed upon with the Manufacturer)

Ø indicates that the box should be left blank.

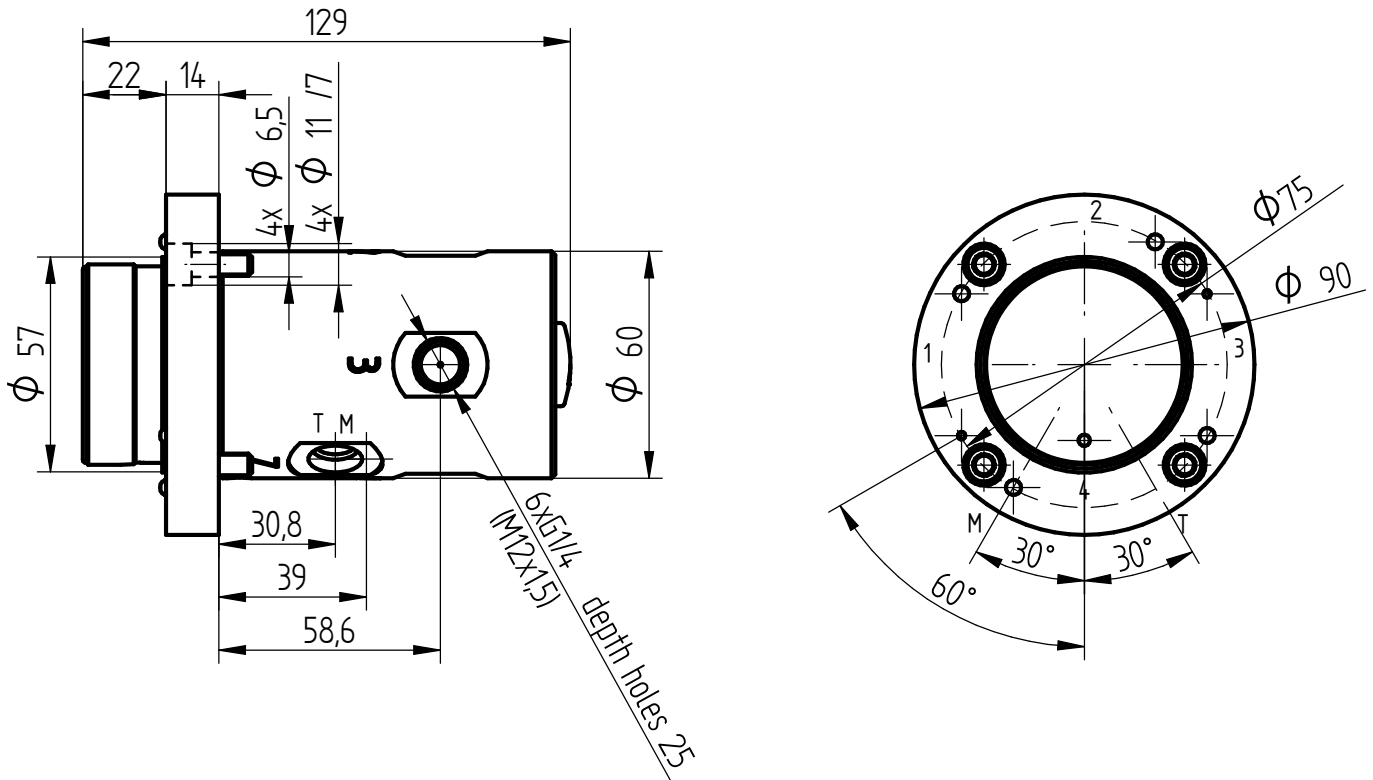
The symbols in bold are the preferred versions available in short delivery time.

Coding example: **UOPF4/00R**

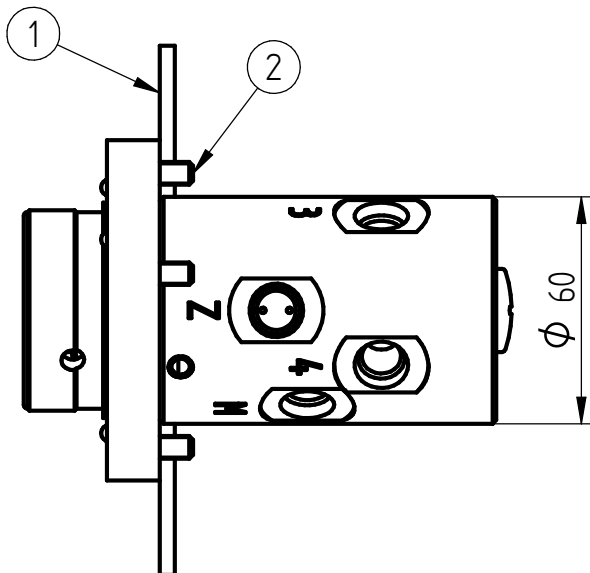
### HYDRAULIC DIAGRAM



## OVERALL AND CONNECTION DIMENSIONS



## INSTALLATION



1. mounting plate
2. screw M6 x 12 - 5.8 4 pcs according to PN/M-82302 (DIN 912)

Mounting screws can be ordered separately.

## CONTACT

PONAR Wadowice S.A.  
ul. Wojska Polskiego 29  
34-100 Wadowice

tel. +48 33 488 21 00  
[www.ponar-wadowice.pl](http://www.ponar-wadowice.pl)