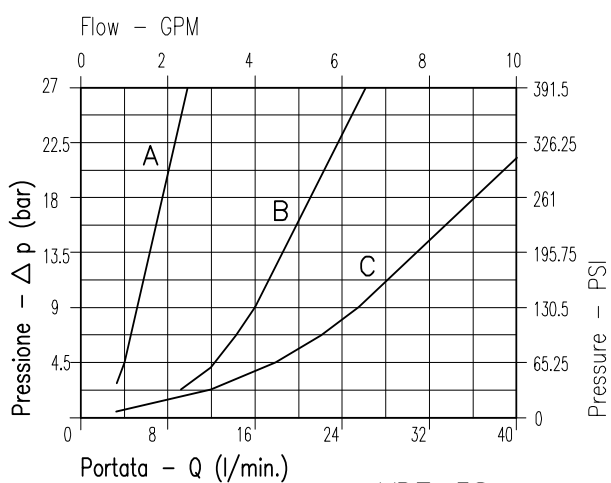


CARATTERISTICHE

Rapporto di flusso	50%
Portata min/max	Vedi tabella / See table
Pressione di lavoro max.	210 bar - 3075 PSI
Temperatura ambiente	-30°C + 50°C
Temperatura olio	-30°C + 80°C
Filtraggio consigliato	50 micron
Peso	0.869 Kg. 3/8" GAS
Peso	0.850 Kg. 1/2" GAS

PERFORMANCE

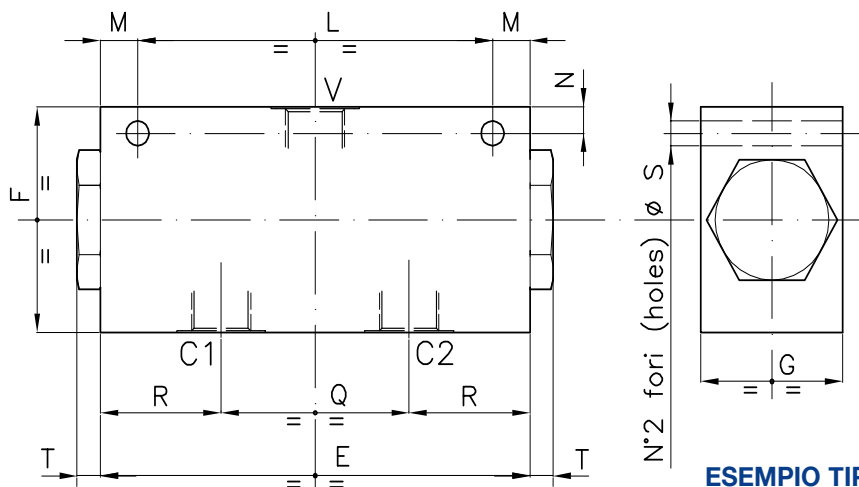
Flow division ratio
Min/max flow-rate
Max working pressure
Room temperature
Oil temperature
Recommended filtration
Weight
Weight



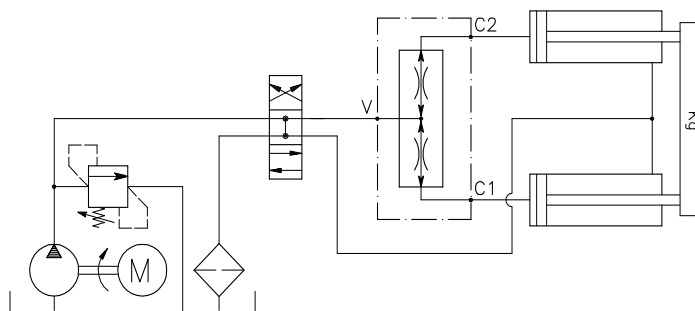
VDF-38
VDF-12

Viscosità olio 46 cSt a 50°C
Oil viscosity 46 cSt at 50°C

VALVOLA DIVISORE/RIUNIFICATORE DI FLUSSO
FLOW DIVIDER/COMBINER



ESEMPIO TIPICO DI CIRCUITO
TYPICAL CIRCUIT EXAMPLE



DIMENSIONI
DIMENSIONS

NUMERO VALVOLA VALVE NUMBER	E	F	G	L	M	N	Q	R	S	T	Attacchi Port size V GAS (BSPP)	Attacchi Port size C1-C2 GAS (BSPP)
008	121	60	40	100	10.5	7	53	34	6.5	7	3/8"	3/8"
009	121	60	40	100	10.5	7	53	34	6.5	7	1/2"	3/8"

CODICE DI ORDINAZIONE
HOW TO ORDER

004 008 A 0 0

Numero valvola / Valve number

008

009

VDF-38 e VDF-12
 Campo di portata consigliato
 Recommended inlet flow rate

A	da 6.5 a 11.5 - 1.7 to 3
B	da 12 a 23.5 - 3.2 to 6.2
C	da 24 a 39.5 - 6.3 to 10.4
D	da 2 a 6 - 0.5 to 1.6