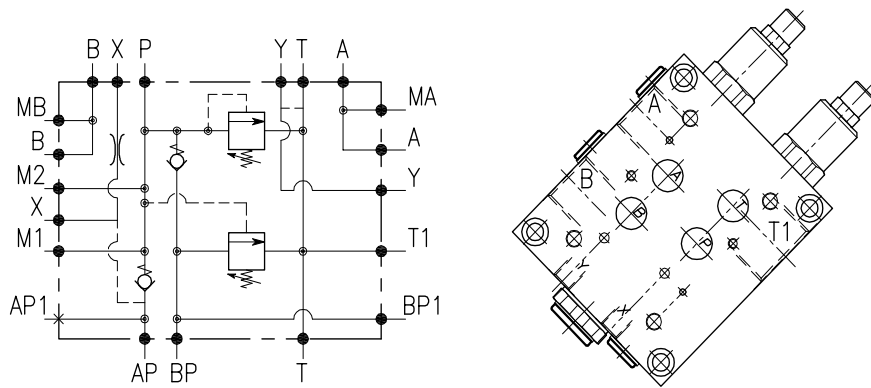


VDP-L16-FC7-34-L-F-...



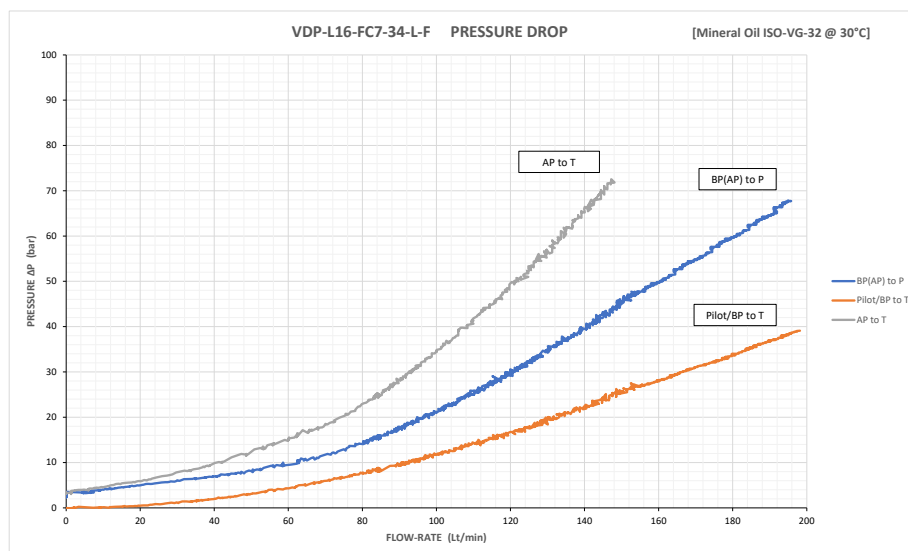
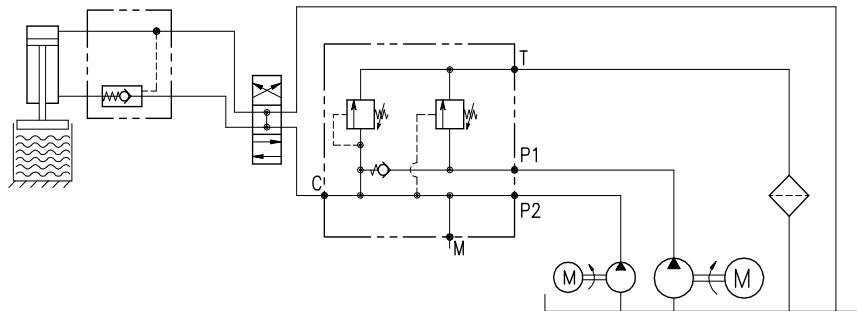
CARATTERISTICHE

Luce nominale	DN 16 - Cetop 7
Portata max	200 l/min - 50 GPM
Pressione di lavoro max.	350 bar - 5075 PSI
Pressione max. di taratura	350 bar - 5075 PSI
Temperatura ambiente	-30°C + 50°C
Temperatura olio	-30°C + 80°C
Filtraggio consigliato	30÷50 micron
Peso	7.505 Kg

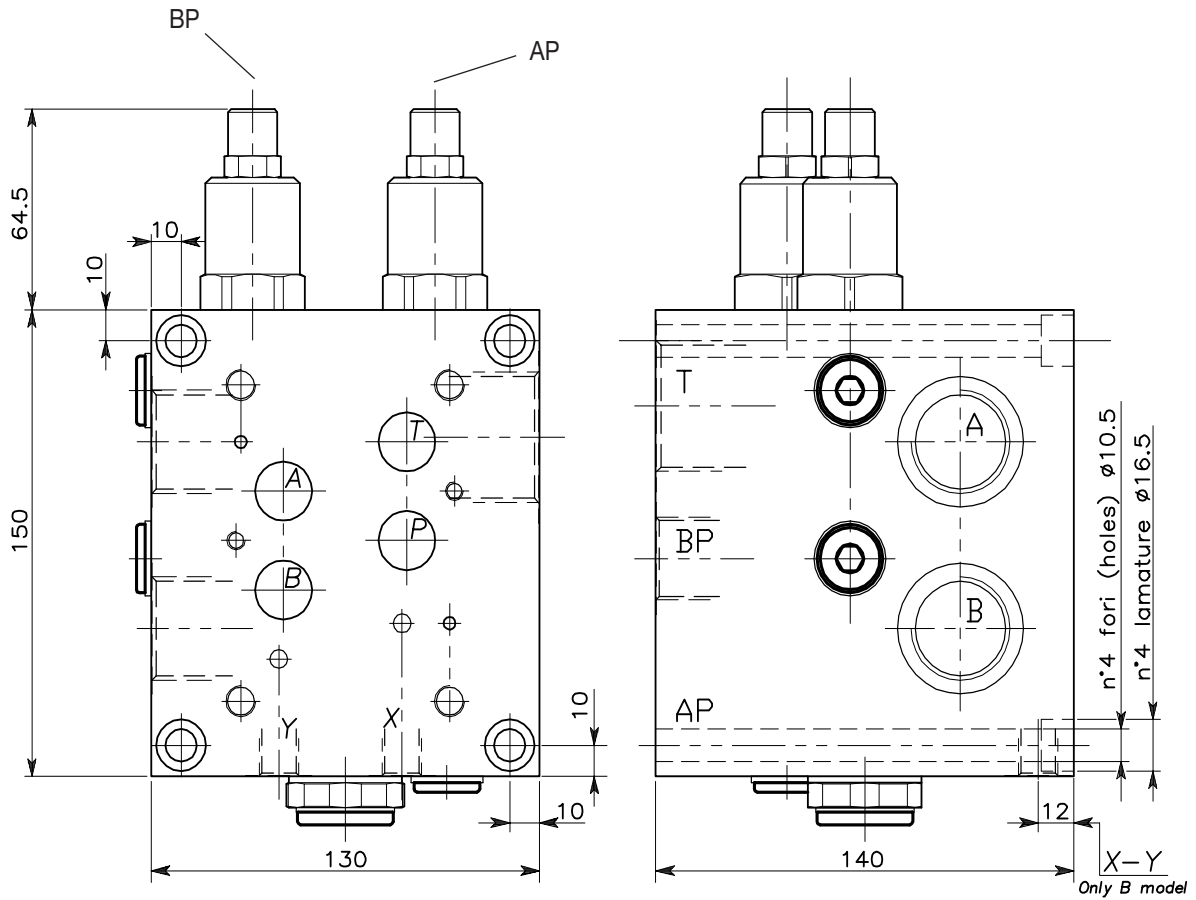
PERFORMANCE

Rated size
Max flow-rate
Max working pressure
Max setting pressure
Room temperature
Oil temperature
Recommended filtration
Weight

ESEMPIO TIPICO DI CIRCUITO TYPICAL CIRCUIT EXAMPLE



**VALVOLA DI MESSA A SCARICO PER POMPA DOPPIA CON CONTROLLO DELLA PRESSIONE,
MONTAGGIO CETOP**
PUMP UNLOADING VALVE WITH ADDITIONAL RELIEF, CETOP MOUNTING



**DIMENSIONI
DIMENSIONS**

Campo taratura Setting range	Attacchi Port size T-T1 GAS (BSPP)	Attacchi Port size A-B GAS (BSPP)	Attacchi Port size BP-BP1 GAS (BSPP)	Attacchi Port size AP-AP1 GAS (BSPP)	Attacchi Port size M1-M2-MA MB-X-Y GAS (BSPP)	Luce nominale Rated size DN	Portata max Max flow-rate l/min - GPM
404	1 1/4"	1"	3/4"	1/2"	1/4"	16	200-50

**CODICE DI ORDINAZIONE
HOW TO ORDER**

002 404 A 0 0

Campo taratura / Setting range

(AP)

404

(BP)

Collettore in alluminio
Aluminum manifold

Campo taratura 20÷350 bar (molla colore giallo)
Setting range 20÷350 bar (yellow spring)

Campo taratura 10÷90 bar (molla colore giallo)
Setting range 10÷90 bar (yellow spring)

Taratura standard (Q=5 l/1')
Std. bar setting (Q=5 l/1')
280 bar

Incr. press. - bar giro/vite
Pressure rise - turn of screw
(--)

Taratura standard (Q=5 l/1')
Std. bar setting (Q=5 l/1')
40 bar

Incr. press. - bar giro/vite
Pressure rise - turn of screw
(--)