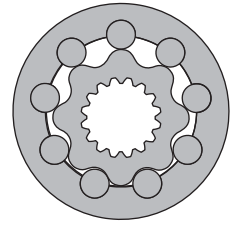
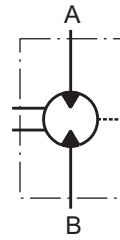


HYDRAULIC MOTORS VMF



APPLICATION

- » Marine equipment
- » Forestry equipment
- » Metal working machines
- » Agricultural machines
- » Road building machines
- » Mining machinery
- » Special vehicles etc.



CONTENTS

Specification data	45
Dimensions and mounting	46
Permissible shaft seal pressure	46
Permissible shaft loads	47
Order code	47

OPTIONS

- » Model - Disc valve, roll-gerotor
- » Wheel mounting flange
- » Side ports
- » Shaft - thread hole flange
- » SAE and BSPP ports
- » Other special features

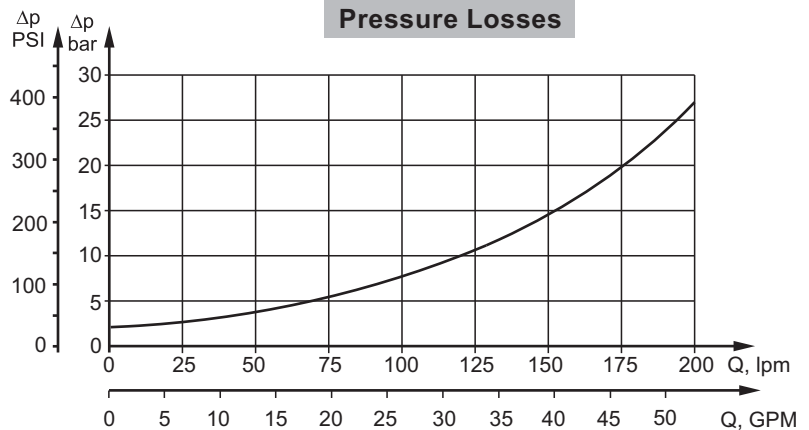
GENERAL

Max. Displacement, in ³ /rev [cm ³ /rev]	48.91 [801,8]
Max. Speed, [RPM]	736
Max. Torque, lb-in [daNm]	cont.: 22920 [259] int.: 30090 [340]
Max. Output, HP [kW]	150 [112]
Max. Pressure Drop, PSI [bar]	cont.: 3630 [250] int.: 5080 [350]
Max. Oil Flow, GPM [lpm]	63.4 [240]
Min. Speed, [RPM]	5
Permissible Shaft Loads, lbs [daN]	Pa=3370 [1500]
Pressure fluid	Mineral based- HLP(DIN 51524) or HM(ISO 6743/4)
Temperature range, °F [°C]	-40÷284 [-40÷140]
Optimal Viscosity range, SUS [mm²/s]	98÷347 [20÷75]
Filtration	ISO code 20/16 (Min. recommended fluid filtration of 25 microns)

Oil flow in drain line

Pressure drop bar [PSI]	Viscosity mm ² /s [SUS]	Oil flow in drain line lpm [GPM]
2900 [200]	980 [20]	.660 [2,5]
	164 [35]	.400 [1,5]
3990 [275]	98 [20]	1.057 [4]
	164 [35]	.660 [2,5]

Pressure Losses



SPECIFICATION DATA

Type		VMF 315	VMF 400	VMF 500	VMF 630	VMF 800
Displacement, in³/rev [cm³/rev]		19.18 [314,5]	24.5 [400,9]	30.5 [499,6]	38.38 [629,1]	48.91 [801,8]
Max. Speed, [RPM]	cont.	636	500	400	315	250
	Int.*	736	600	480	380	300
Max. Torque lb-in [daNm]	cont.	10180 [115]	12745 [144]	15930 [180]	20090 [227]	22920 [259]
	Int.*	14160 [160]	17700 [200]	23010 [260]	27440 [310]	30090 [340]
	peak**	15930 [180]	20355 [230]	25315 [286]	31860 [360]	35580 [402]
Max. Output HP [kW]	cont.	90 [67]	90 [67]	90 [67]	90 [67]	90 [67]
	int.*	150 [112]	150 [112]	150 [112]	150 [112]	150 [112]
Max. Pressure Drop PSI [bar]	cont.	3630 [250]	3630 [250]	3630 [250]	3630 [250]	3263 [225]
	Int.*	5080 [350]	5080 [350]	5080 [350]	5080 [350]	4350 [300]
	peak**	5800 [400]	5800 [400]	5800 [400]	5800 [400]	5080 [350]
Max. Oil Flow GPM [lpm]	cont.	52.8 [200]	52.8 [200]	52.8 [200]	52.8 [200]	52.8 [200]
	Int.*	63.4 [240]	63.4 [240]	63.4 [240]	63.4 [240]	63.4 [240]
Max. Inlet Pressure PSI [bar]	cont.	3915 [270]	3915 [270]	3915 [270]	3915 [270]	3915 [270]
	Int.*	5365 [370]	5365 [370]	5365 [370]	5365 [370]	5365 [370]
	peak**	6090 [420]	6090 [420]	6090 [420]	6090 [420]	6090 [420]
Max. Return Pressure with Drain Line PSI [bar]	cont.	2030 [140]	2030 [140]	2030 [140]	2030 [140]	2030 [140]
	Int.*	2540 [175]	2540 [175]	2540 [175]	2540 [175]	2540 [175]
	peak**	3045 [210]	3045 [210]	3045 [210]	3045 [210]	3045 [210]
Max. Starting Pressure with Unloaded Shaft, PSI [bar]		70 [5]	70 [5]	70 [5]	70 [5]	70 [5]
Min. Starting Torque lb-in [daNm]		8140 [92]	10180 [115]	12745 [144]	15930 [180]	18145 [205]
Min. Speed***, [RPM]		10	6	8	6	5
Weight, lb [kg]		101.4 [46]	104.1 [47,2]	106.9 [48,5]	110.2 [50]	113.5 [51,5]

* Intermittent operation: the permissible values may occur for max. 10% of every minute.

** Peak load: the permissible values may occur for max. 1% of every minute.

*** For speeds lower than given, consult factory or your regional manager.

1. Intermittent speed and intermittent pressure drop must not occur simultaneously.
2. Recommended filtration is per ISO cleanliness code 20/16. A nominal filtration of 25 micron or better.
3. Recommend using a premium quality, anti-wear type mineral based hydraulic oil HLP(DIN51524) or HM (ISO 6743/4).
If using synthetic fluids consult the factory for alternative seal materials.
4. Recommended minimum oil viscosity 70 SUS [13 mm²/s] at 122°F [50°C].
5. Recommended maximum system operating temperature is 180°F [82°C].
6. To assure optimum motor life fill with fluid prior to loading and run at moderate load and speed for 10-15 minutes.

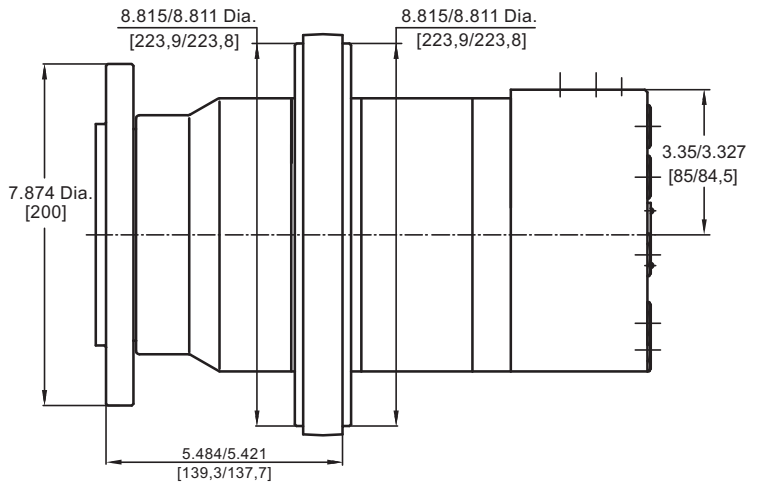
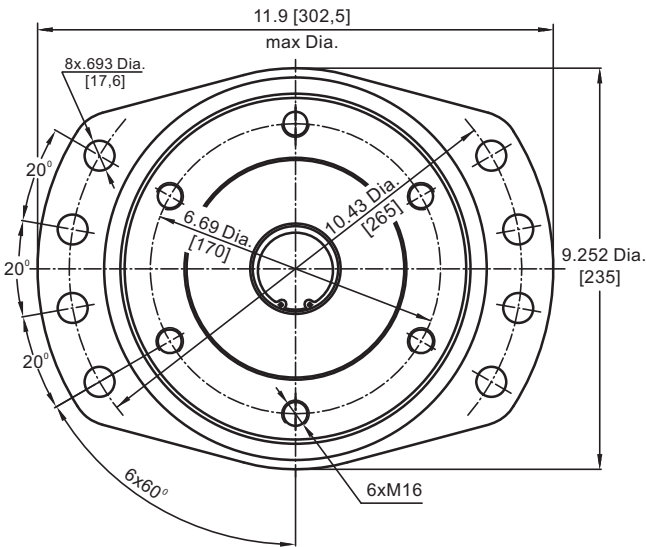
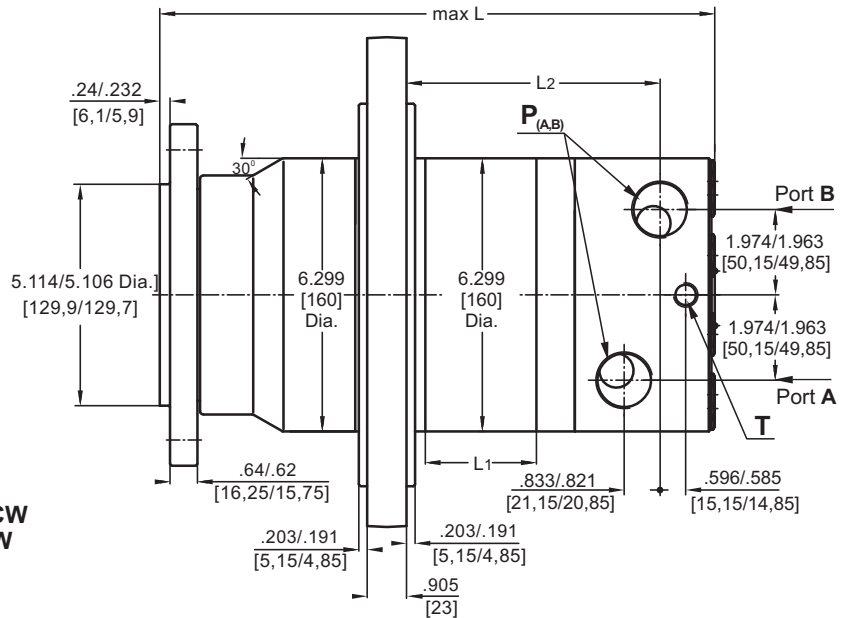
DIMENSIONS AND MOUNTING DATA

	Versions	
	2	4
P_(A,B)	2xG1	2x1 ⁵ / ₁₆ -12UN
T	G ¹ / ₄	9 ¹⁶ -18UNF

Type	L, in [mm]	L ₁ , in [mm]	L ₂ , in [mm]
VMF 315	11.28 [286,5]	1.00 [25,5]	4.31 [109,5]
VMF 400	11.56 [293,5]	1.28 [32,5]	4.59 [116,5]
VMF 500	11.87 [301,5]	1.59 [40,5]	4.90 [124,5]
VMF 630	12.28 [312,0]	2.01 [51,0]	5.31 [135,0]
VMF 800	12.83 [326,0]	2.56 [65,0]	5.87 [149,0]

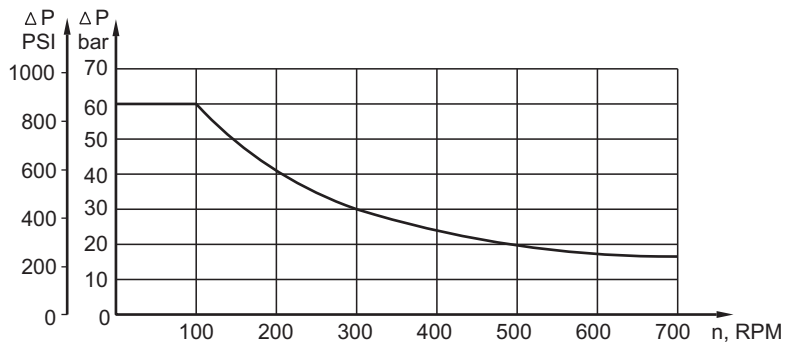
Standard Rotation
Viewed from Shaft End
Port A Pressurized - **CW**
Port B Pressurized - **CCW**

Reverse Rotation
Viewed from Shaft End
Port A Pressurized - **CCW**
Port B Pressurized - **CW**

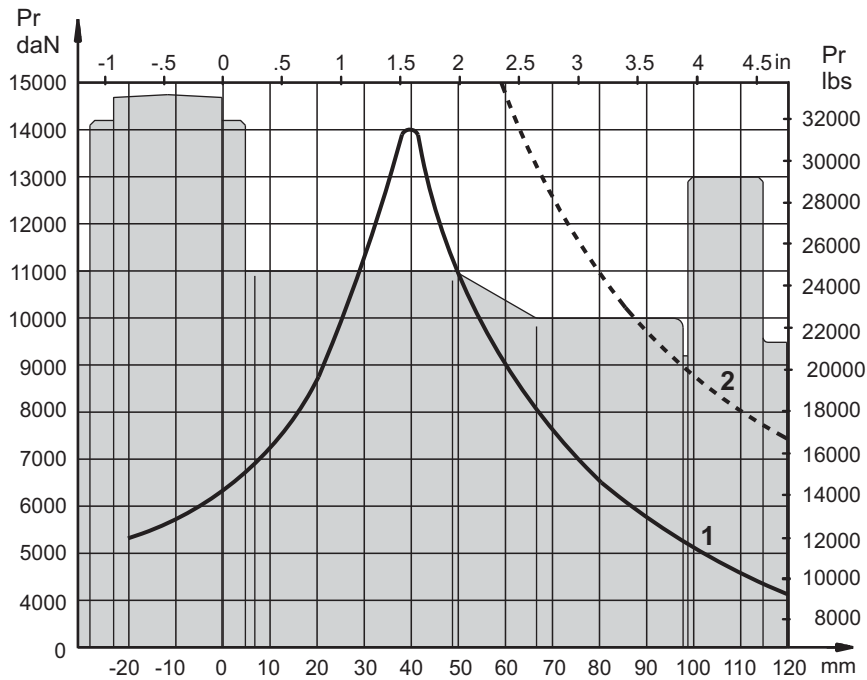


Warning: Drain line should always be used.

MAX. PERMISSIBLE SHAFT SEAL PRESSURE



PERMISSIBLE SHAFT LOADS



- 1 - Bearing curve: The curve applies to a B10 bearing life of 2000 hours at 100 RPM.
- 2 - Shaft curve: The curve represents Max. permissible radial shaft load with safety factor 2:1.

ORDER CODE

	1	2	3	4
VMF			HD	

Pos.1 - Displacement code

315	- 19.18 in ³ /rev [314,5 cm ³ /rev]
400	- 24.45 in ³ /rev [400,9 cm ³ /rev]
500	- 30.48 in ³ /rev [499,6 cm ³ /rev]
630	- 38.38 in ³ /rev [629,1 cm ³ /rev]
800	- 48.91 in ³ /rev [801,8 cm ³ /rev]

Pos.2 - Ports

2	- side ports, 2xG1, G ¹ / ₄ , BSP thread, ISO 228
4	- side ports, 2x1 ⁵ / ₁₆ -12 UN, O-ring, ⁹ / ₁₆ -18 UNF

Pos.3 - Special Features

HD	- Reinforced motor HD *
-----------	--------------------------------

For Other **Special Features** [see page 48](#)

Pos.4 - Design Series

omit	- Factory specified
------	---------------------

* Drain line should always be used.
The hydraulic motors are mangano-phosphatized as standard.