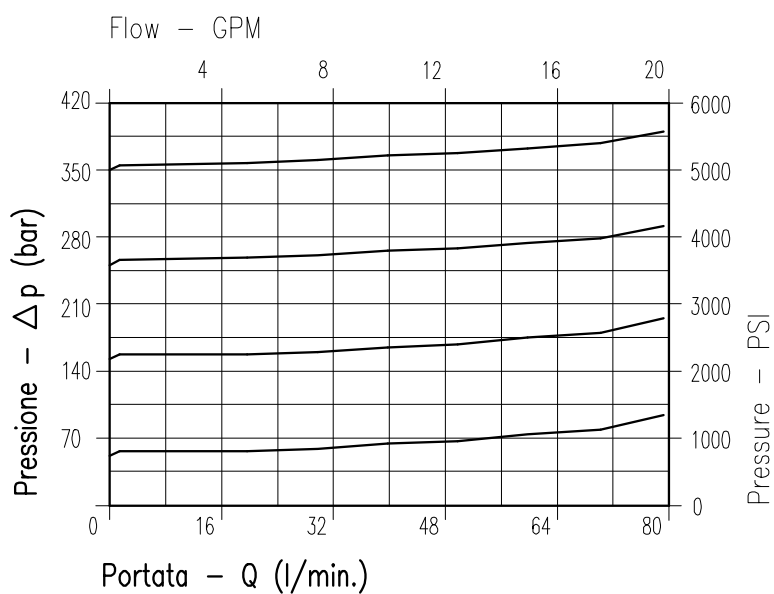


## CARATTERISTICHE

Luce nominale	<b>DN 10</b>
Portata max	<b>80 l/min - 21 GPM</b>
Pressione di lavoro max.	<b>350 bar - 5075 PSI</b>
Pressione max. di taratura	<b>350 bar - 5075 PSI</b>
Temperatura ambiente	<b>-30°C + 50°C</b>
Temperatura olio	<b>-30°C + 80°C</b>
Filtraggio consigliato	<b>30÷50 micron</b>
Coppia di serraggio	<b>60÷69 Nm</b>
Peso	<b>0.382 kg</b>

## PERFORMANCE

Rated size
Max flow-rate
Max working pressure
Max setting pressure
Room temperature
Oil temperature
Recommended filtration
Tightening torque
Weight



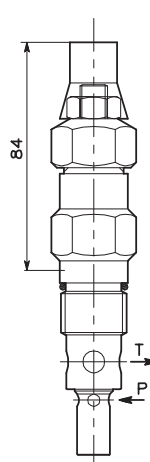
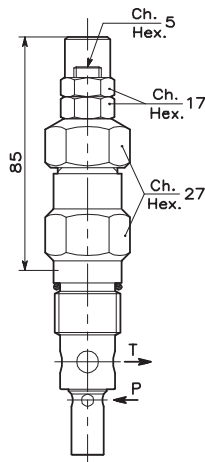
**Viscosità olio 46 cSt a 50°C**  
**Oil viscosity 46 cSt at 50°C**

# VALVOLA DI MASSIMA PRESSIONE A CARTUCCIA AD AZIONE DIRETTA CON OTTURATORE CONICO CARTRIDGE RELIEF, DIRECT ACTING POPPET TYPE VALVE

REGOLAZIONE  
ADJUSTMENT

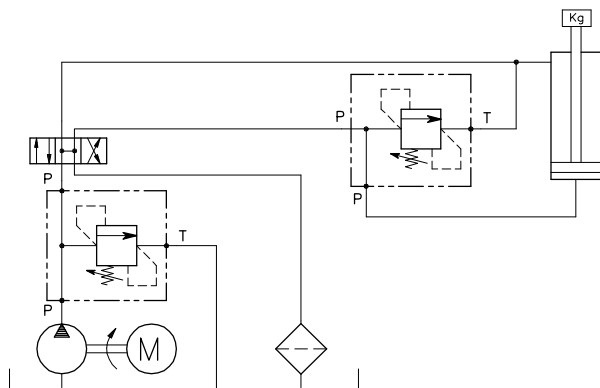
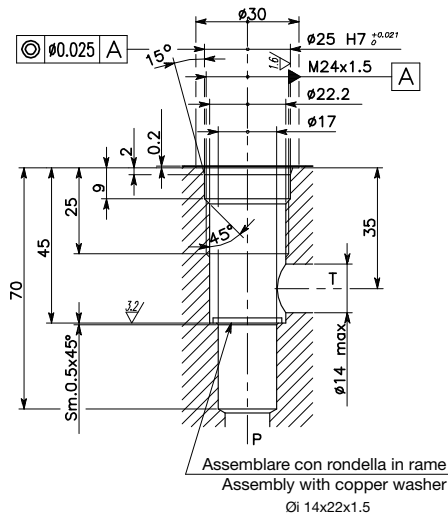
Grano  
Dowel  
(X)

Piombata  
Sealed  
(K)



## CAVITA' CE.010.L CAVITY

## ESEMPIO TIPICO DI CIRCUITO TYPICAL CIRCUIT EXAMPLE



Si raccomanda l'esatta esecuzione della sede  
The valve seat should be perfectly tooled

Regolazione Adjustment	
X	Grano - Dowel
K	Piombata - Sealed

## CODICE DI ORDINAZIONE HOW TO ORDER

002 005 0 X 0

Campo taratura / Setting range											
005		163		164		165		166		315	
Campo taratura 5÷50 bar (molla colore blu)		Campo taratura 10÷100 bar (molla colore nero)		Campo taratura 10÷150 bar (molla colore verde)		Campo taratura 25÷250 bar (molla colore giallo)		Campo taratura 50÷310 bar (molla colore rosso)		Campo taratura 150÷350 bar (molla speciale)	
Setting range 5÷50 bar (blue spring)		Setting range 10÷100 bar (black spring)		Setting range 10÷150 bar (green spring)		Setting range 25÷250 bar (yellow spring)		Setting range 50÷310 bar (red spring)		Setting range 150÷350 bar (special spring)	
Taratura standard (Q=5 l/1')	Incr. press. - bar giro/vite	Taratura standard (Q=5 l/1')	Incr. press. - bar giro/vite	Taratura standard (Q=5 l/1')	Incr. press. - bar giro/vite	Taratura standard (Q=5 l/1')	Incr. press. - bar giro/vite	Taratura standard (Q=5 l/1')	Incr. press. - bar giro/vite	Taratura standard (Q=5 l/1')	Incr. press. - bar giro/vite
Std. bar setting (Q=5 l/1')	Pressure rise - turn of screw	Std. bar setting (Q=5 l/1')	Pressure rise - turn of screw	Std. bar setting (Q=5 l/1')	Pressure rise - turn of screw	Std. bar setting (Q=5 l/1')	Pressure rise - turn of screw	Std. bar setting (Q=5 l/1')	Pressure rise - turn of screw	Std. bar setting (Q=5 l/1')	Pressure rise - turn of screw
40 bar	(--)	80 bar	(--)	120 bar	(--)	210 bar	(--)	300 bar	(--)	320 bar	(--)