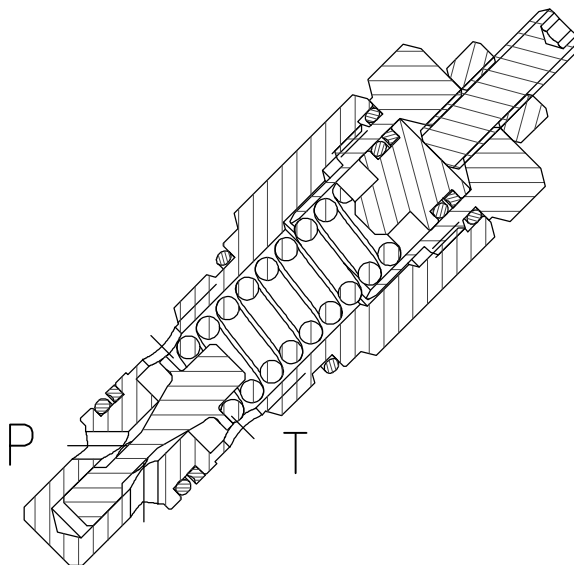
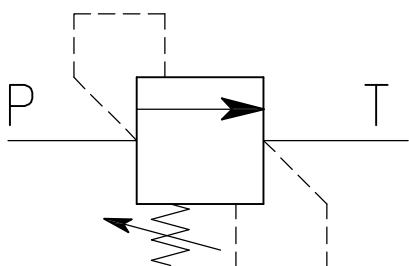


# VMP-CP20-...

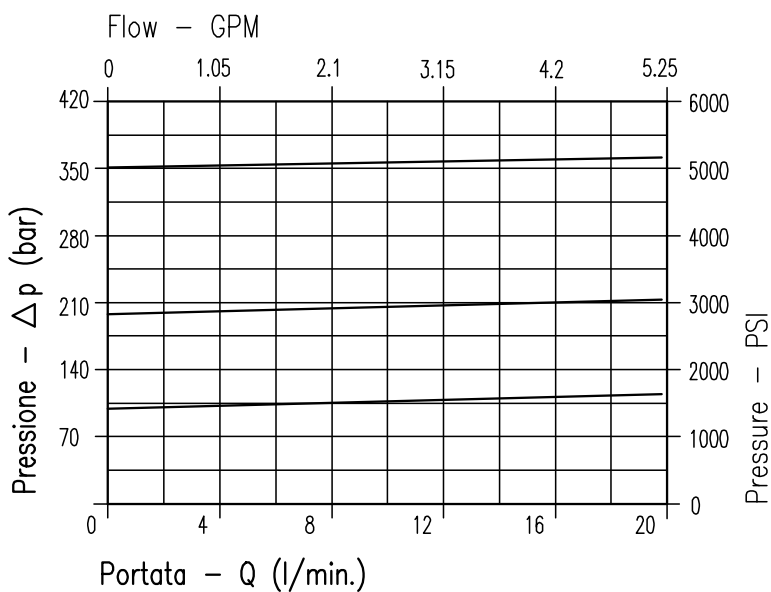


## CARATTERISTICHE

Luce nominale	<b>DN 8</b>
Portata min/max	<b>40 l/min - 10.55 GPM</b>
Pressione di lavoro max.	<b>350 bar - 5075 PSI</b>
Pressione max. di taratura	<b>350 bar - 5075 PSI</b>
Temperatura ambiente	<b>-30°C + 50°C</b>
Temperatura olio	<b>-30°C + 80°C</b>
Filtraggio consigliato	<b>30÷50 micron</b>
Coppia di serraggio	<b>50÷59 Nm</b>
Peso	<b>0.155 kg</b>

## PERFORMANCE

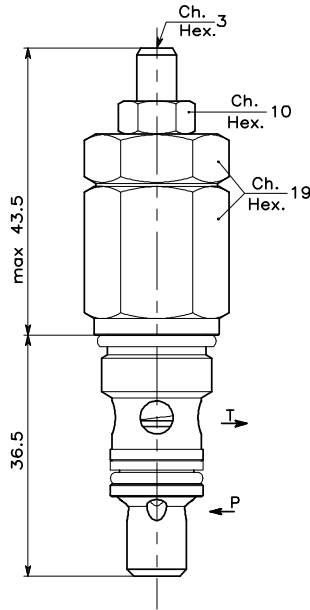
Rated size
Min/max flow-rate
Max working pressure
Max setting pressure
Room temperature
Oil temperature
Recommended filtration
Tightening torque
Weight



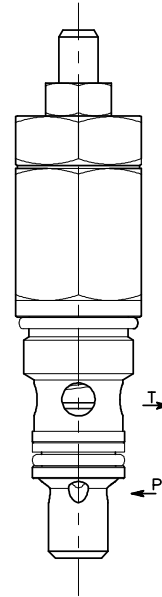
**Viscosità olio 46 cSt a 50°C**  
**Oil viscosity 46 cSt at 50°C**

**VALVOLA DI MASSIMA PRESSIONE A CARTUCCIA AD AZIONE DIRETTA CON OTTURATORE CONICO**  
**CARTRIDGE RELIEF, DIRECT ACTING POPPET TYPE VALVE**

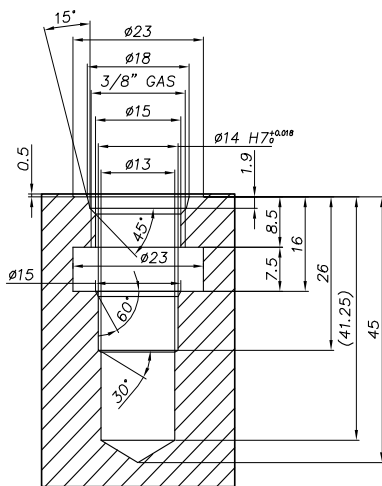
REGOLAZIONE  
ADJUSTMENT →



Grano  
Dowel

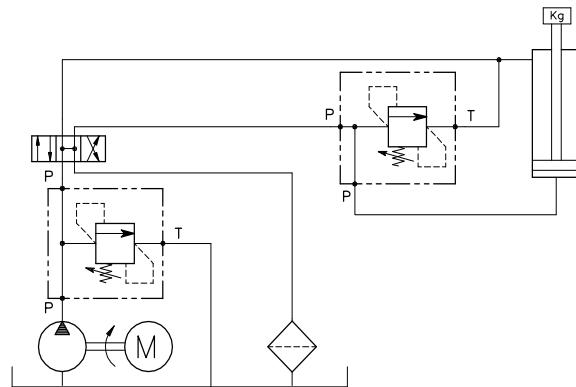


**CAVITA' CAVITY** **CE.133.N**



Si raccomanda l'esatta esecuzione della sede  
The valve seat should be perfectly tooled

**ESEMPIO TIPICO DI CIRCUITO**  
**TYPICAL CIRCUIT EXAMPLE**



**CODICE DI ORDINAZIONE**  
**HOW TO ORDER**

002 768 X X 0

Campo taratura / Setting range					
X		U		K	
Campo taratura 5÷100 bar (molla colore blu) Setting range 5÷100 bar (blue spring)		Campo taratura 10÷210 bar (molla colore verde) Setting range 10÷210 bar (green spring)		Campo taratura 20÷350 bar (molla colore giallo) Setting range 20÷350 bar (yellow spring)	
Taratura standard (Q=5 l/1')	Incr. press. - bar giro/vite	Taratura standard (Q=5 l/1')	Incr. press. - bar giro/vite	Taratura standard (Q=5 l/1')	Incr. press. - bar giro/vite
Std. bar setting (Q=5 l/1')	Pressure rise - turn of screw	Std. bar setting (Q=5 l/1')	Pressure rise - turn of screw	Std. bar setting (Q=5 l/1')	Pressure rise - turn of screw
80 bar	(--)	180 bar	(--)	320 bar	(--)