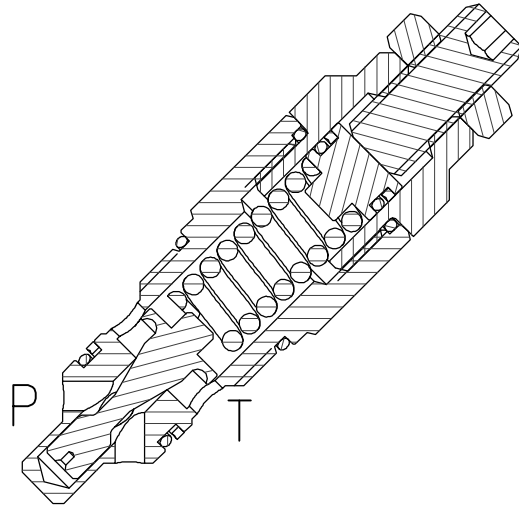
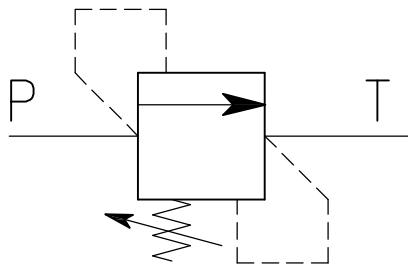


VMP-CP40-...

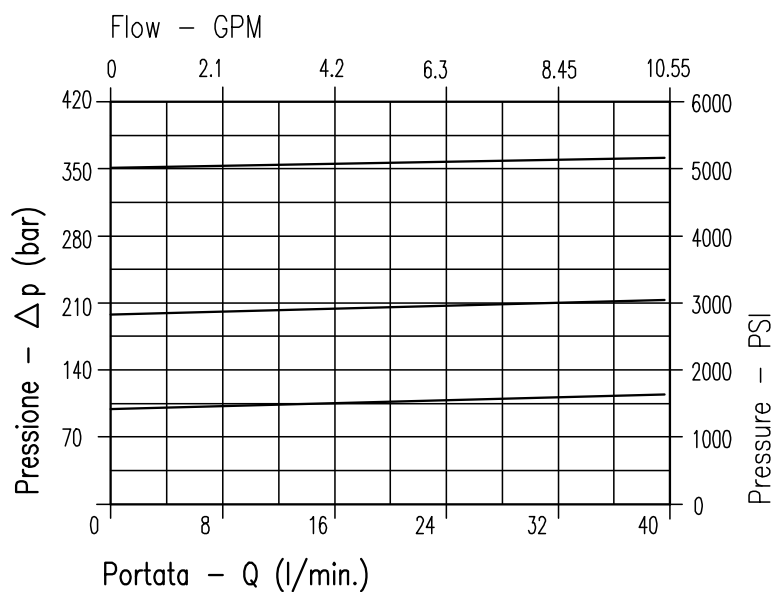


CARATTERISTICHE

| | |
|----------------------------|-----------------------------|
| Luce nominale | DN 8 |
| Portata min/max | 40 l/min - 10.55 GPM |
| Pressione di lavoro max. | 350 bar - 5075 PSI |
| Pressione max. di taratura | 350 bar - 5075 PSI |
| Temperatura ambiente | -30°C + 50°C |
| Temperatura olio | -30°C + 80°C |
| Filtraggio consigliato | 30÷50 micron |
| Coppia di serraggio | 50÷59 Nm |
| Peso | 0.155 kg |

PERFORMANCE

| |
|------------------------|
| Rated size |
| Min/max flow-rate |
| Max working pressure |
| Max setting pressure |
| Room temperature |
| Oil temperature |
| Recommended filtration |
| Tightening torque |
| Weight |

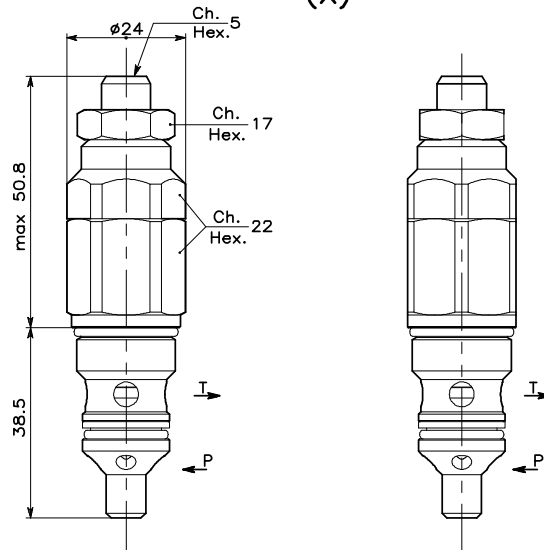


Viscosità olio 46 cSt a 50°C
Oil viscosity 46 cSt at 50°C

VALVOLA DI MASSIMA PRESSIONE A CARTUCCIA AD AZIONE DIRETTA CON OTTURATORE CONICO CARTRIDGE RELIEF, DIRECT ACTING POPPET TYPE VALVE

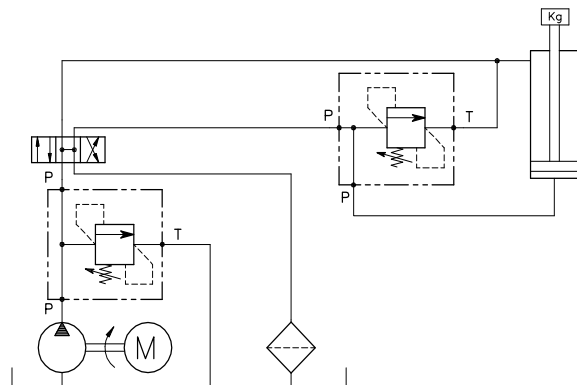
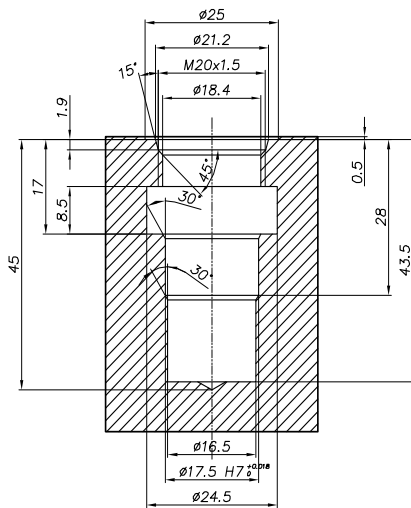
REGOLAZIONE
ADJUSTMENT →

Grano
Dowel
(X)



CAVITA' CAVITY CE.134.N

ESEMPIO TIPICO DI CIRCUITO TYPICAL CIRCUIT EXAMPLE



Si raccomanda l'esatta esecuzione della sede
The valve seat should be perfectly tooled

CODICE DI ORDINAZIONE HOW TO ORDER

002 769 X X 0

| Campo taratura / Setting range | | | | | |
|--|----------------------------------|---|----------------------------------|---|----------------------------------|
| X | | U | | K | |
| Campo taratura 5÷100 bar (molla colore blu) Setting range 5÷100 bar (blue spring) | | Campo taratura 10÷210 bar (molla colore verde) Setting range 10÷210 bar (green spring) | | Campo taratura 20÷350 bar (molla colore giallo) Setting range 20÷350 bar (yellow spring) | |
| Taratura standard (Q=5 l/1') | Incr. press. - bar giro/vite | Taratura standard (Q=5 l/1') | Incr. press. - bar giro/vite | Taratura standard (Q=5 l/1') | Incr. press. - bar giro/vite |
| Std. bar setting (Q=5 l/1') | Pressure rise - turn of screw | Std. bar setting (Q=5 l/1') | Pressure rise - turn of screw | Std. bar setting (Q=5 l/1') | Pressure rise - turn of screw |
| 80 bar | (--) | 180 bar | (--) | 320 bar | (--) |