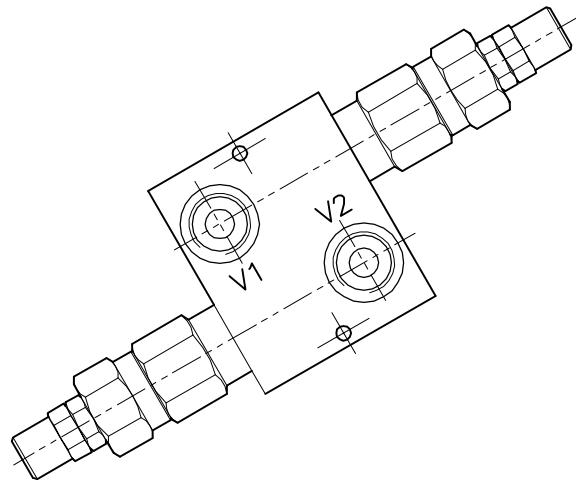
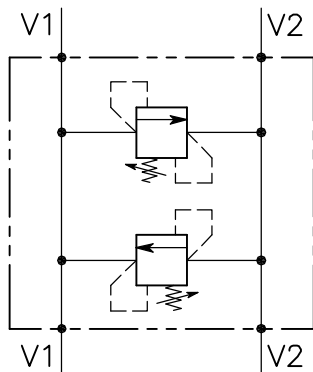


VMP-DI-...-...-L

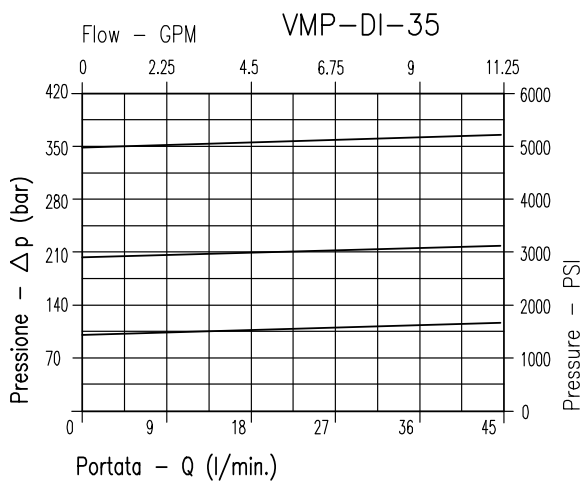


CARATTERISTICHE

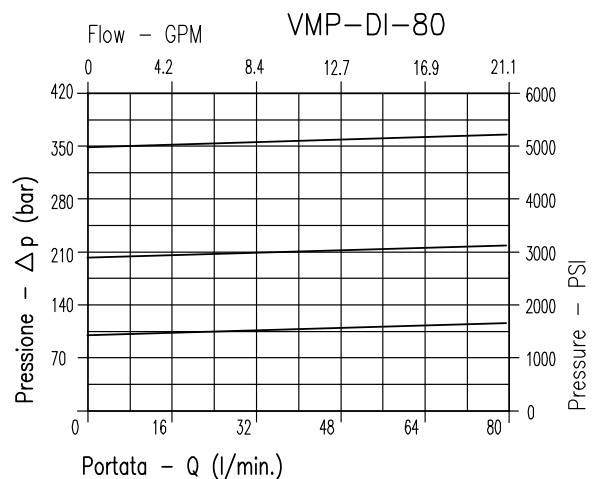
Luce nominale min/max	DN 8/10
Portata min/max	Vedi Tab. / See Tab.
Pressione di lavoro max.	350 bar - 5075 PSI
Pressione max. di taratura	350 bar - 5075 PSI
Temperatura ambiente	-30°C + 50°C
Temperatura olio	-30°C + 80°C
Filtraggio consigliato	30 micron
Coppia di serraggio	70÷85 Nm

PERFORMANCE

Min/max rated size
Min/max flow-rate
Max working pressure
Max setting pressure
Room temperature
Oil temperature
Recommended filtration
Tightening torque

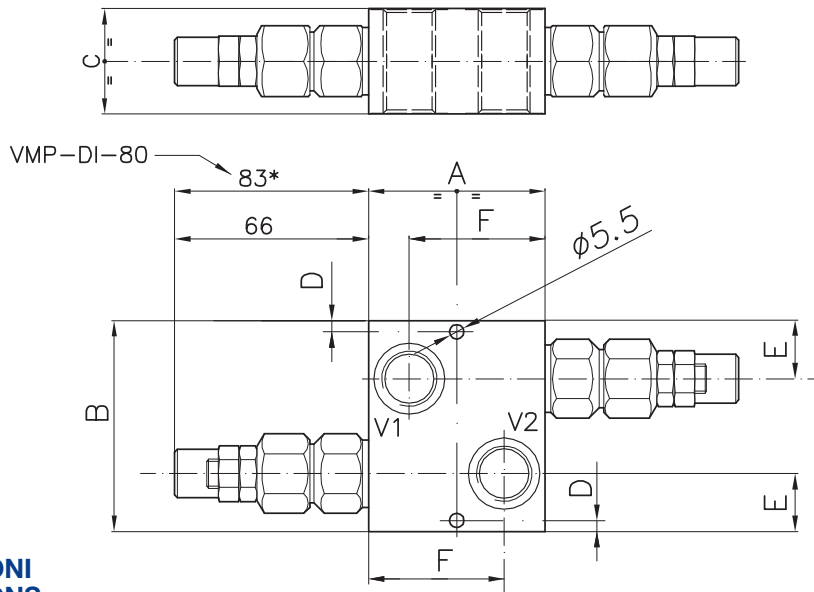


Viscosità olio 46 cSt a 50°C
Oil viscosity 46 cSt at 50°C



Viscosità olio 46 cSt a 50°C
Oil viscosity 46 cSt at 50°C

**VALVOLA DI MASSIMA PRESSIONE A DOPPIO EFFETTO A CARTUCCIA AD AZIONE DIRETTA
CON OTTURATORE CONICO E COLLETTORE IN LINEA**
CARTRIDGE RELIEF DIRECT ACTING POPPET TYPE VALVE WITH IN LINE BODY



**DIMENSIONI
DIMENSIONS**

Campo taratura Setting range			A	B	C	D	E	F	Attacchi Port size V1-V2 GAS (BSPP)	Portata max Max flow-rate
051	281	282	80	60	40	5.5	18	64	3/8"	40 lt/min
052	283	284							1/2"	
Campo taratura Setting range			A	B	C	D	E	F	Attacchi Port size V1-V2 GAS (BSPP)	Portata max Max flow-rate
286	287	288	100	80	50	6	20	60	3/4"	80 lt/min

**CODICE DI ORDINAZIONE
HOW TO ORDER**

Campo taratura / Setting range					
051		281		282	
052		283		284	
Campo taratura 5÷100 bar (molla colore blu)		Campo taratura 10÷210 bar (molla colore verde)		Campo taratura 20÷350 bar (molla colore giallo)	
Setting range 5÷100 bar (blue spring)		Setting range 10÷210 bar (green spring)		Setting range 20÷350 bar (yellow spring)	
Taratura standard (Q=5 l/1')	Incr. press. - bar giro/vite	Taratura standard (Q=5 l/1')	Incr. press. - bar giro/vite	Taratura standard (Q=5 l/1')	Incr. press. - bar giro/vite
Std. bar setting (Q=5 l/1')	Pressure rise - turn of screw	Std. bar setting (Q=5 l/1')	Pressure rise - turn of screw	Std. bar setting (Q=5 l/1')	Pressure rise - turn of screw
80 bar	(--)	180 bar	(--)	320	(--)

002 051 0 X 0

Campo taratura / Setting range					
286		287		288	
Campo taratura 10÷100 bar (molla colore verde)		Campo taratura 25÷250 bar (molla colore giallo)		Campo taratura 40÷350 bar (molla colore rosso)	
Setting range 10÷100 bar (colour green spring)		Setting range 25÷250 bar (colour yellow spring)		Setting range 40÷350 bar (colour red spring)	
Taratura standard (Q=5 l/1')	Incr. press. - bar giro/vite	Taratura standard (Q=5 l/1')	Incr. press. - bar giro/vite	Taratura standard (Q=5 l/1')	Incr. press. - bar giro/vite
Std. bar setting (Q=5 l/1')	Pressure rise - turn of screw	Std. bar setting (Q=5 l/1')	Pressure rise - turn of screw	Std. bar setting (Q=5 l/1')	Pressure rise - turn of screw
80 bar	(--)	210 bar	(--)	320 bar	(--)

Collettore in alluminio
Aluminum manifold