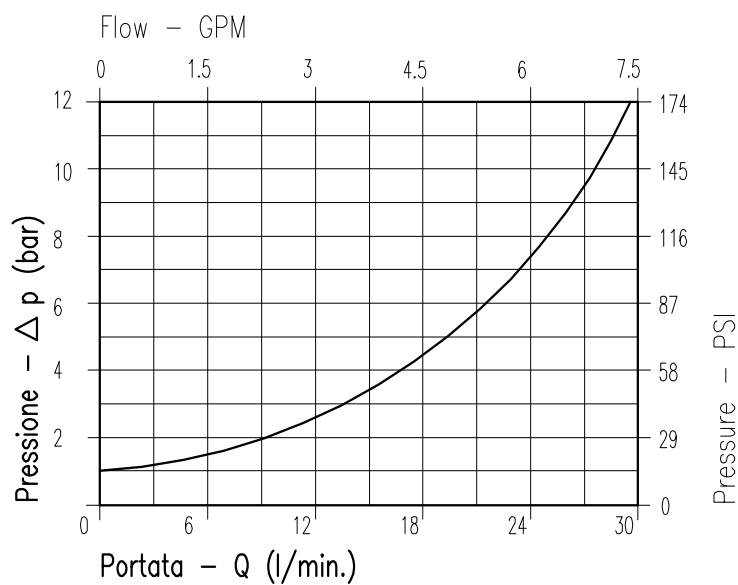


CARATTERISTICHE

| | |
|--------------------------|----------------------------------|
| Luce nominale | DN 6 |
| Portata min/max | 1/30 l/min - 0.26/7.9 GPM |
| Pressione di lavoro max. | 350 bar - 5075 PSI |
| Temperatura ambiente | -30°C + 50°C |
| Temperatura olio | -30°C + 80°C |
| Filtraggio consigliato | 50 micron |
| Coppia di serraggio | 50÷59 Nm |
| Peso | 0.077 Kg |

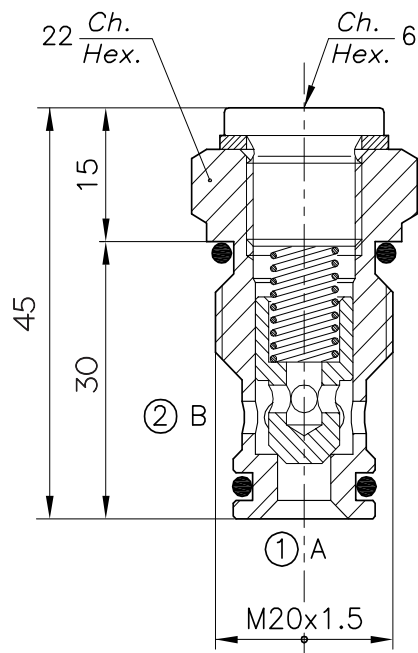
PERFORMANCE

| |
|------------------------|
| Rated size |
| Min/max flow-rate |
| Max working pressure |
| Room temperature |
| Oil temperature |
| Recommended filtration |
| Tightening torque |
| Weight |

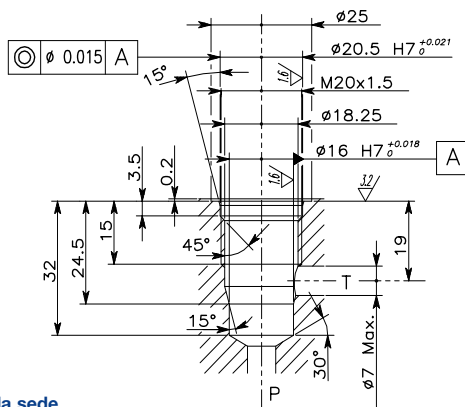


Viscosità olio 46 cSt a 50°C
Oil viscosity 46 cSt at 50°C

VALVOLA DI BLOCCO A CARTUCCIA
CARTRIDGE CHECK VALVE



CAVITA'
CAVITY CE.013.L



Si raccomanda l'esatta esecuzione della sede
 The valve seat should be perfectly tooled

CODICE DI ORDINAZIONE
HOW TO ORDER

003 006 0 J 0

| Inizio apertura Cracking pressure | |
|--------------------------------------|---|
| J | 1 bar Molla (colore nero) Spring (black) |
| W | 6÷8 bar Molla (colore giallo) Spring (yellow) |