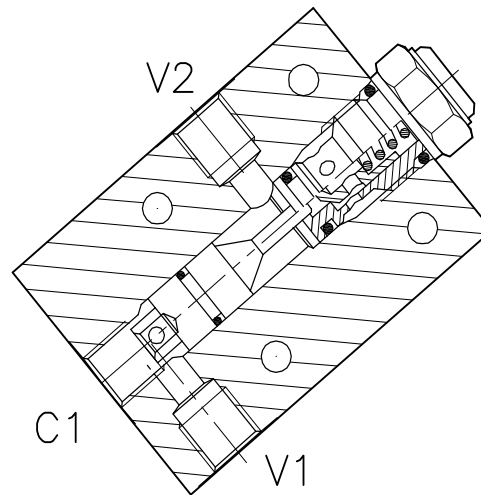
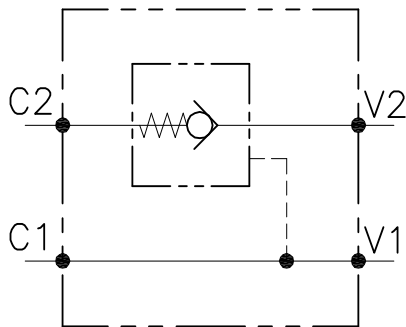


# VNR-C-SO-SE-...-FC1-...



## CARATTERISTICHE

Luce nominale min/max  
 Portata min/max  
 Pressione di lavoro max.  
 Rapporto di pilotaggio  
 Temperatura ambiente  
 Temperatura olio  
 Filtraggio consigliato  
 Peso  
 Peso

**Vedi tabella/See table**  
**Vedi tabella/See table**  
**350 bar - 5075 PSI**  
**4 : 1**  
**-30°C + 50°C**  
**-30°C + 80°C**  
**50 micron**  
**0.750 Kg. 3/8" GAS**  
**0.724 Kg. 1/2" GAS**

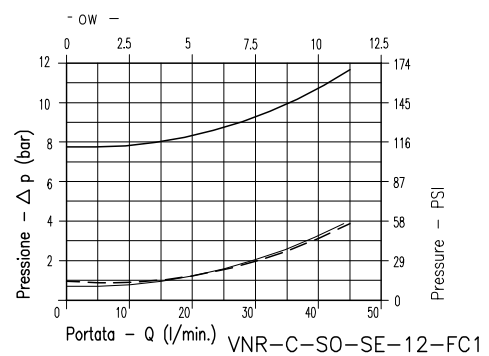
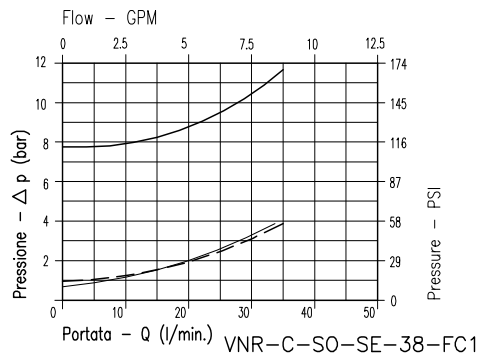
## PERFORMANCE

Min/max rated size  
 Min/max flow-rate  
 Max working pressure  
 Pilot ratio  
 Room temperature  
 Oil temperature  
 Recommended filtration  
 Weight  
 Weight

8Bar Flusso libero  
 (free flow)

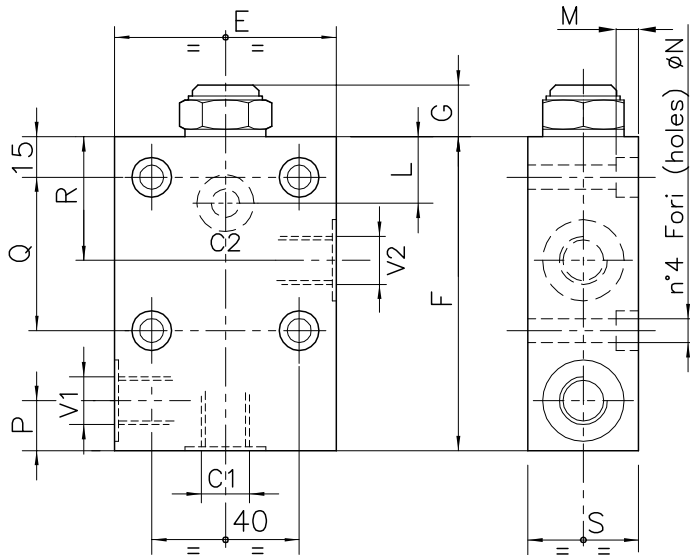
1Bar Flusso libero  
 (free flow)

Flusso pilotato  
 (piloted flow)

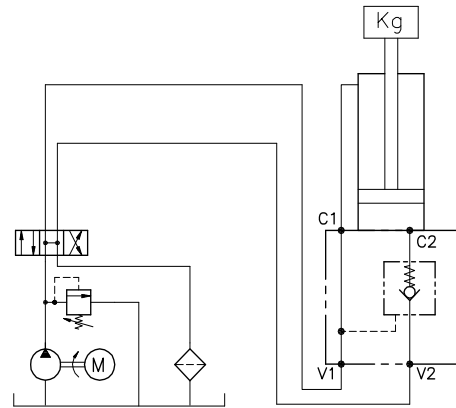


**Viscosità olio 46 cSt a 50°C / Oil viscosity 46 cSt at 50°C**

**VALVOLA DI BLOCCO PILOTATA A CARTUCCIA A SEMPLICE EFFETTO CON COLLETTORE FLANGIATO**  
**CARTRIDGE PILOT CHECK VALVE WITH FLANGEABLE BODY**



**ESEMPIO TIPICO DI CIRCUITO**  
**TYPICAL CIRCUIT EXAMPLE**



**DIMENSIONI**  
**DIMENSIONS**

NUMERO VALVOLA VALVE NUMBER	E	F	G	L	M	N	P	Q	R	S	Attacchi Port size V2-C2 V1-C1 GAS (BSPP)	Luce nominale Rated size DN	Portata max Max flow-rate l/min - GPM
042	70	95	18	20,5	3	8,5	19	40	38	35	3/8"	8	40-10.6
043	70	95	18	20,5	3	8,5	19	40	38	35	1/2"	8	60-15.9

**CODICE DI ORDINAZIONE**  
**HOW TO ORDER**

003	042	0	J	0
Numero valvola / Valve number	Pistone di pilotaggio Pilot piston	Inizio apertura Cracking pressure	Collettore in alluminio Aluminum manifold	
042	A O-RING sul pist. di pilotaggio Pilot piston O-RING	J 1 bar Molla (colore nero) Spring (black)		
043	O Senza O-RING sul pist. di pilotaggio No pilot piston O-RING	W 6÷8 bar Molla (colore giallo) Spring (yellow)		