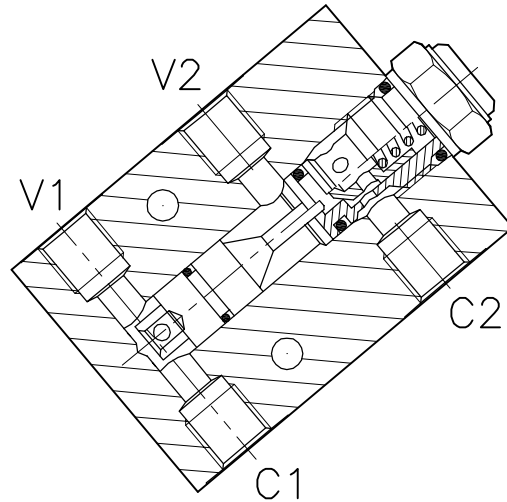
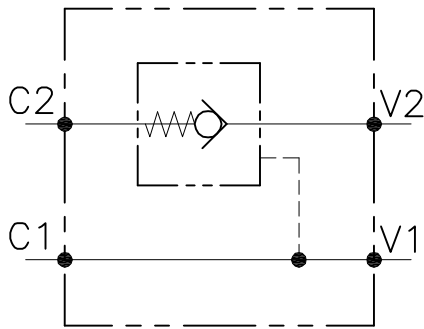


VNR-C-SO-SE-...-...



CARATTERISTICHE

Luce nominale min/max	Vedi tabella/See table
Portata min/max	Vedi tabella/See table
Pressione di lavoro max.	350 bar - 5075 PSI
Rapporto di pilotaggio	Vedi tabella/See table
Temperatura ambiente	-30°C + 50°C
Temperatura olio	-30°C + 80°C
Filtraggio consigliato	50 micron
Peso	0.459 Kg. 1/4" GAS
Peso	0.750 Kg. 3/8" GAS
Peso	0.724 Kg. 1/2" GAS

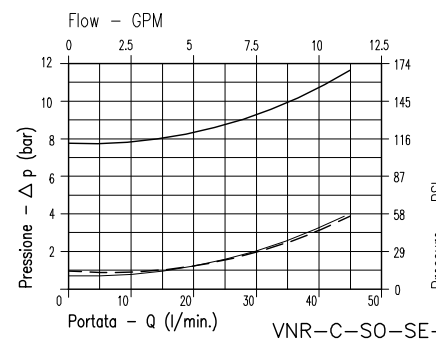
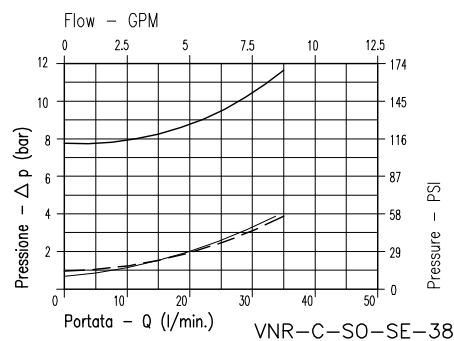
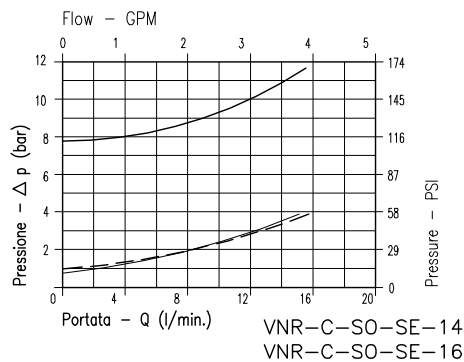
PERFORMANCE

Min/max rated size
Min/max flow-rate
Max working pressure
Pilot ratio
Room temperature
Oil temperature
Recommended filtration
Weight
Weight
Weight

8Bar Flusso libero
(free flow)

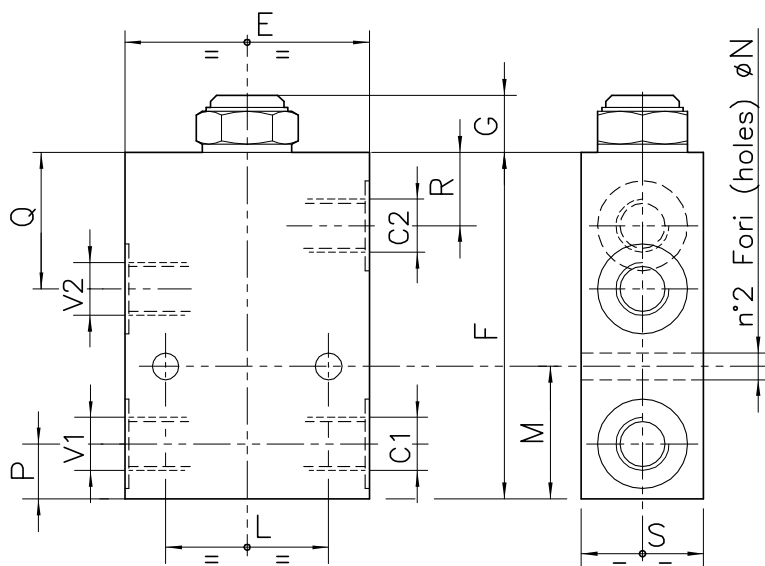
1Bar Flusso libero
(free flow)

Flusso pilotato
(piloted flow)

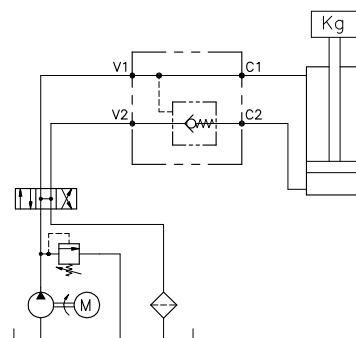


Viscosità olio 46 cSt a 50°C / Oil viscosity 46 cSt at 50°C

VALVOLA DI BLOCCO PILOTATA, A SEMPLICE EFFETTO CON COLLETTORE IN LINEA
SINGLE PILOT, CHECK VALVE WITH IN LINE BODY



ESEMPIO TIPICO DI CIRCUITO
TYPICAL CIRCUIT EXAMPLE



DIMENSIONI
DIMENSIONS

NUMERO VALVOLA VALVE NUMBER	E	F	G	L	M	N	P	Q	R	S	Attacchi Port size V2-C2 V1-C1 GAS (BSPP)	Luce nominale Rated size DN	Portata max Max flow-rate l/min - GPM	Rapporto di pilotaggio Pilot ratio
036	60	85	15	40	32.5	6.5	13.5	33.5	18	30	1/4"	4	20-5.2	5.4:1
038	70	95	18	40	40	8.5	19	38	20.5	35	3/8"	6	40-10.6	4:1
039	70	95	18	40	40	8.5	19	38	20.5	35	1/2"	8	60-15.9	4:1

CODICE DI ORDINAZIONE
HOW TO ORDER

003 036 0 J 0

Numero valvola / Valve number	Pistone di pilotaggio Pilot piston	Inizio apertura Cracking pressure	Collettore in alluminio Aluminum manifold
036	A O-RING sul pist. di pilotaggio Pilot piston O-RING	J 1 bar Molla (colore nero) Spring (black)	
038	O Senza O-RING sul pist. di pilotaggio No pilot piston O-RING	W 6÷8 bar Molla (colore giallo) Spring (yellow)	
039			