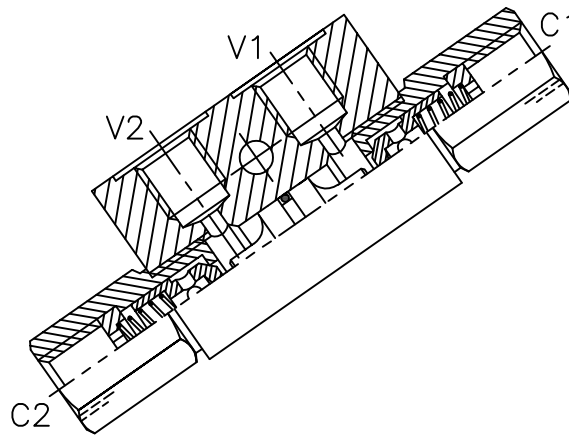
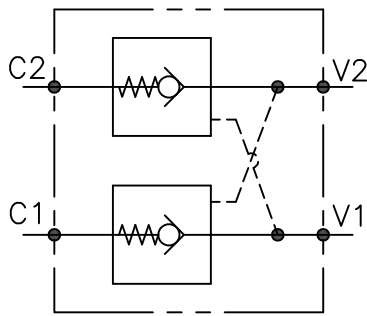


# VNR-SO-DE-...-L-...



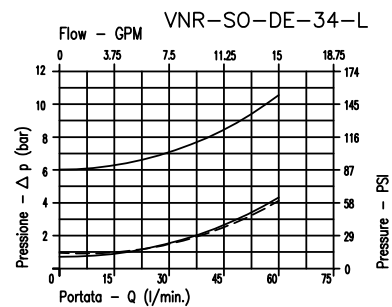
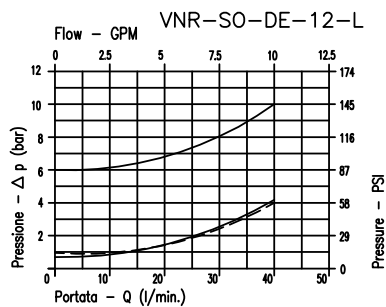
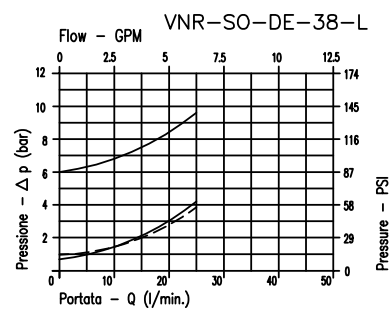
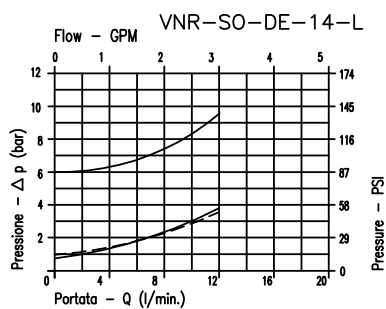
## CARATTERISTICHE

Luce nominale  
 Portata min/max  
 Pressione max. di picco  
 Pressione max. di taratura  
 Rapporto di pilotaggio standard  
 Temperatura ambiente  
 Temperatura olio  
 Filtraggio consigliato  
 Peso

Vedi tabella/See table  
 Vedi tabella/See table  
**350 bar 5075 PSI**  
 Vedi tabella/See table  
 Vedi tabella/See table  
**-30°C + 50°C**  
**-30°C + 80°C**  
**30 + 50**  
 Vedi tabella/See table

## PERFORMANCE

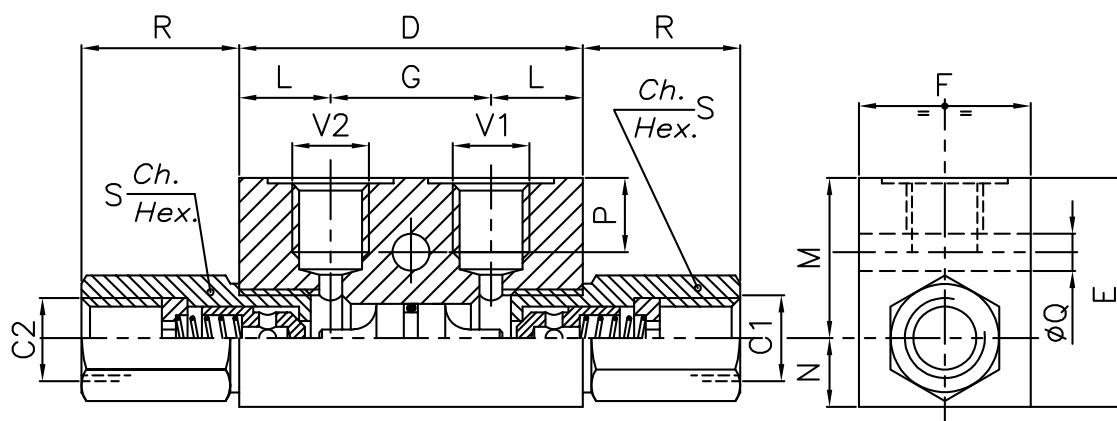
Rated size  
 Min/max flow-rate  
 Max peak pressure  
 Max setting pressure  
 Standard pilot ratio  
 Room temperature  
 Oil temperature  
 Recommended filtration  
 Weight



———— 8Bar Flusso libero (Free flow)  
 - - - - 1Bar Flusso libero (Free flow)  
 ———— Flusso pilotato (Piloted open)

Viscosita' olio 46 cSt a 50 °C  
 Oil viscosity 46 cSt at 50 °C

**VALVOLA DI BLOCCO A DOPPIO EFFETTO PILOTATA**  
**ALUMINIUM DOUBLE PILOT CHECK VALVE**



**DIMENSIONI**  
**DIMENSIONS**

NUMERO VALVOLA VALVE NUMBER	D	E	F	G	L	M	N	P	Q	R	S	Attacchi	Luce nominale	Rapporto di	Portata max	Peso
												Port size V2-C2 V1-C1 GAS (BSPP)	Rated size DN	pilotaggio Pilot ratio	max flow-rate l/min-GPM	Weight Kg
030	60	40	30	28	16	28	12	13	6.5	27,5	19	1/4"	6	4:1	20-5.3	0.4
031	70	50	35	38	16	35	15	15	6.5	29	24	3/8"	8	4:1	40-10.6	0.5
032	80	50	35	38	21	34	16	15	6.5	32	27	1/2"	11	4:1	60-15.9	0.6
033	100	60	40	50	25	39	21	15	8.5	41	38	3/4"	16	3.5:1	80-21.3	1.3

**COLLETTORE IN ALLUMINIO**  
**ALUMINIUM BODY**

**CODICE DI ORDINAZIONE**  
**HOW TO ORDER**

003	033	0	W	0
Numero valvola / Valve number	Pistone di pilotaggio Pilot piston	Inizio apertura Cracking pressure		
030	A O-RING sul pist. di pilotaggio Pilot piston O-RING	J 1 bar Molla (colore nero) Spring (black)		
031	O Senza O-RING sul pist. di pilotaggio No pilot piston O-RING	W 6÷8 bar Molla (colore giallo) Spring (yellow)		
032				
033				