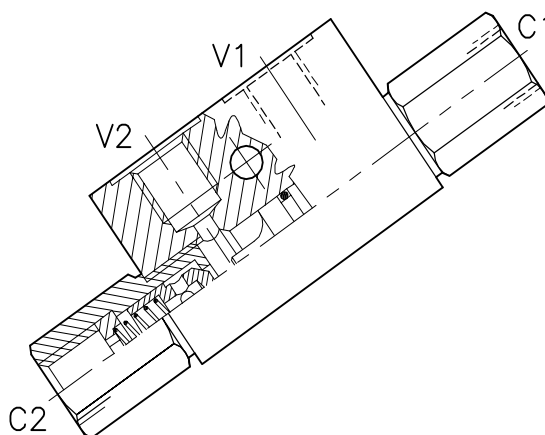
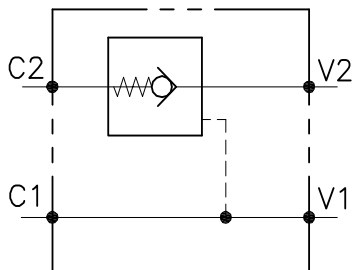


VNR-SO-SE-...-L-...



CARATTERISTICHE

Luce nominale min/max

Portata min/max

Pressione di lavoro max.

Temperatura ambiente

Temperatura olio

Filtraggio consigliato

Vedi tabella/See table

Vedi tabella/See table

350 bar - 5075 PSI

-30°C + 50°C

-30°C + 80°C

30÷50

PERFORMANCE

Min/max rated size

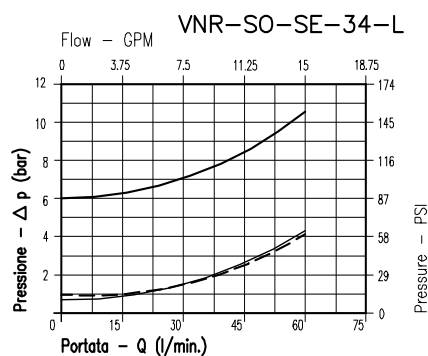
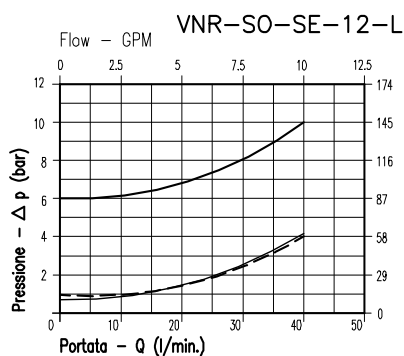
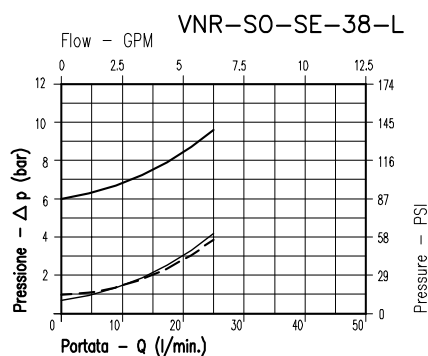
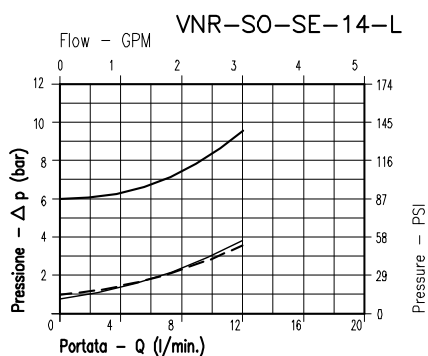
Min/max flow-rate

Max working pressure

Room temperature

Oil temperature

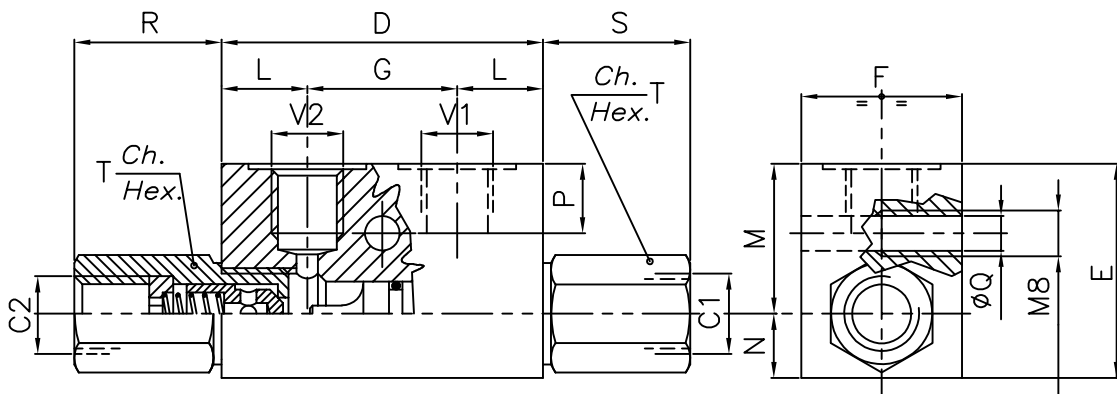
Recommended filtration



- 8Bar Flusso libero (free flow)
- - - - - 1Bar Flusso libero (free flow)
- Flusso pilotato (pilot flow)

Viscosità olio 46 cSt a 50°C
Oil viscosity 46 cSt at 50°C

VALVOLA DI BLOCCO A SEMPLICE EFFETTO PILOTATA
SINGLE PILOT CHECK VALVE, POPPET TYPE



SOLO PER VERSIONI 1/4" E 3/8" GAS / ONLY FOR 1/4" 3/8" GAS VERSION

DIMENSIONI
DIMENSIONS

NUMERO VALVOLA VALVE NUMBER	D	E	F	G	L	M	N	P	Q	R	S	T	Attacchi Port size V2-C2 V1-C1 GAS (BSPP)	Luce nomi- nale Rated size DN	Rapporto di pilotaggio Pilot ratio	Portata max max flow-rate l/min-GPM
026	64	40	30	36	14	27	13	8	6,5	27	27	22	1/4"	6	6:1	20-5.2
027													3/8"			
028	80	50	35	38	21	34	16	15	6,5	32	26	27	1/2"	11	4:1	40-10.6
029	100	60	40	50	25	39	21	15	8,5	41	41	38/32	3/4"	16	3.5:1	60-15.8

CODICE DI ORDINAZIONE
HOW TO ORDER

N03 027 0 W 0 . A

Numero valvola / Valve number	Pistone di pilotaggio Pilot piston	Inizio apertura Cracking pressure	Materiale collettore body material
026	A O-RING sul pist. di pilotaggio Pilot piston O-RING	J 1 bar Molla (colore nero) Spring (black)	Acciaio zincato Zinc plated steel
027	O Senza O-RING sul pist. di pilotaggio No pilot piston O-RING	W 6÷8 bar Molla (colore giallo) Spring (yellow)	

003 029 0 W 0 . A

Numero valvola / Valve number	Pistone di pilotaggio Pilot piston	Inizio apertura Cracking pressure	Materiale collettore body material
028	A O-RING sul pist. di pilotaggio Pilot piston O-RING	J 1 bar Molla (colore nero) Spring (black)	Acciaio zincato Zinc plated steel
029	O Senza O-RING sul pist. di pilotaggio No pilot piston O-RING	W 6÷8 bar Molla (colore giallo) Spring (yellow)	