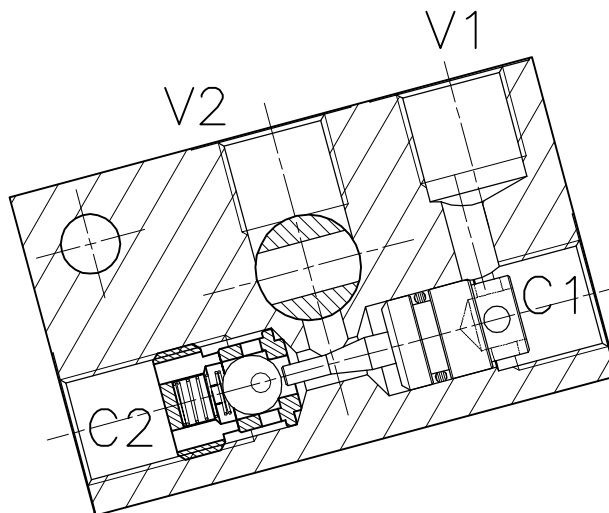
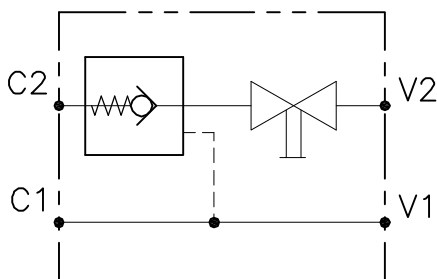


VRC-SE-OIL-...-D-S



CARATTERISTICHE

Luce nominale
 Portata max
 Pressione di lavoro max.
 Rapporto di pilotaggio
 Temperatura ambiente
 Temperatura olio
 Filtraggio consigliato

DN 8

Vedi tabella/See table

350 bar - 5075 PSI

Vedi tabella/See table

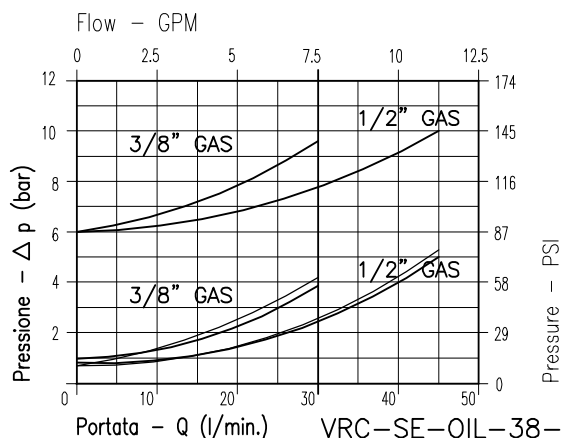
-30°C + 50°C

-30°C + 80°C

50 micron

PERFORMANCE

Rated size
 Max flow-rate
 Max working pressure
 Pilot ratio
 Room temperature
 Oil temperature
 Recommended filtration

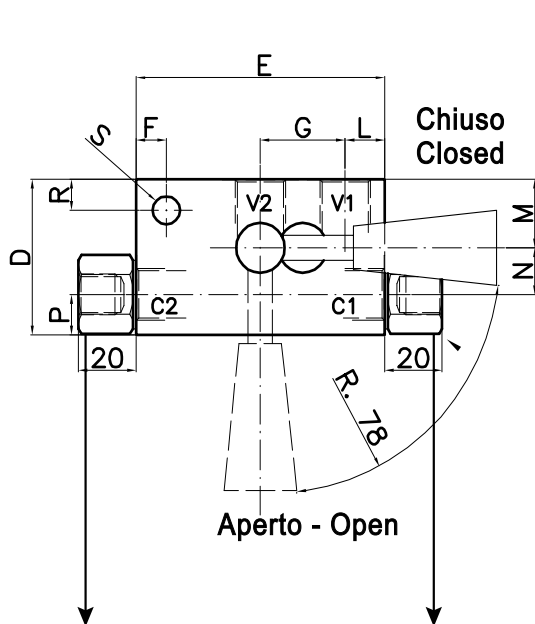


VRC-SE-OIL-38-D-S
 VRC-SE-OIL-12-D-S

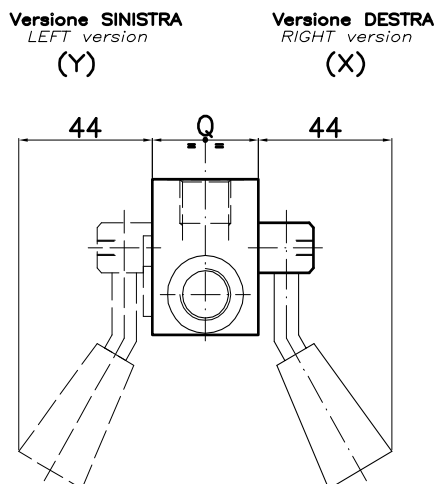
- 8Bar Flusso libero (free flow)
- 1Bar Flusso libero (free flow)
- Flusso pilotato (piloted flow)

Viscosità olio 46 cSt a 50°C
Oil viscosity 46 cSt at 50°C

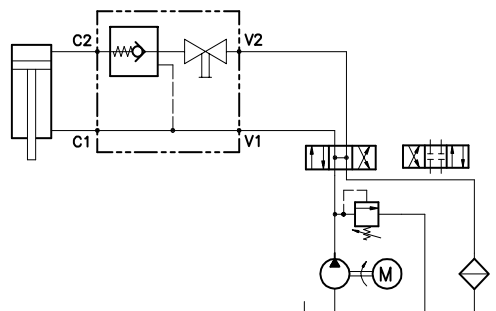
VALVOLA DI BLOCCO PILOTATA CON RUBINETTO DI SICUREZZA
PILOT OPERATED CHECK VALVE WITH MANUAL SHUT-OFF



Raccordi solo per versione 341
 Fittings only for 341 model



ESEMPIO TIPICO DI CIRCUITO
TYPICAL CIRCUIT EXAMPLE



DIMENSIONI
DIMENSIONS

NUMERO VALVOLA VALVE NUMBER	D	E	F	G	L	M	N	P	Q	R	S	PORTATA FLOW-RATE	ATTACCHI PORT SIZE	RAPPORTO DI PILOTAGGIO PILOT RATIO
												L/min	V-C	
297	50	82	10	28	13	30	20	13	35	10	9	30	3/8" - 3/8"	5.4:1
348	65	90	10	35	15	30	20	15	35	10	9	45	1/2" - 1/2"	3.2:1

CODICE DI ORDINAZIONE
HOW TO ORDER

003 297 0 X 0 . A

Numero valvola / Valve number

297

348

Tipo
Type

X DESTRA
RIGHT

Y SINISTRA
LEFT

Materiale collettore
Body material

Acciaio zincato
Zinc plated steel

297

348

Collettore possibile in AL togliendo "A"
 Available aluminium body without "A"