

## CARATTERISTICHE

Luce nominale min/max

Portata min/max

Pressione di lavoro max.

Temperatura ambiente

Temperatura olio

Filtraggio consigliato

Peso

Peso

Peso (\*)

Vedi tabella/See table

Vedi tabella/See table

**210 bar - 3045 PSI**

**-30°C + 50°C**

**-30°C + 80°C**

**50 micron**

**1.194 Kg. 3/8" GAS**

**1.171 Kg. 1/2" GAS**

**2.144 Kg. 3/4" GAS**

## PERFORMANCE

Min/max rated size

Min/max flow-rate

Max working pressure

Room temperature

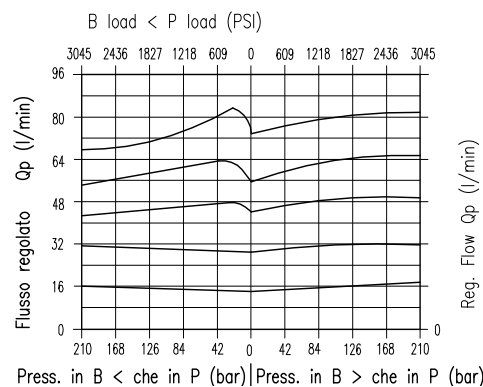
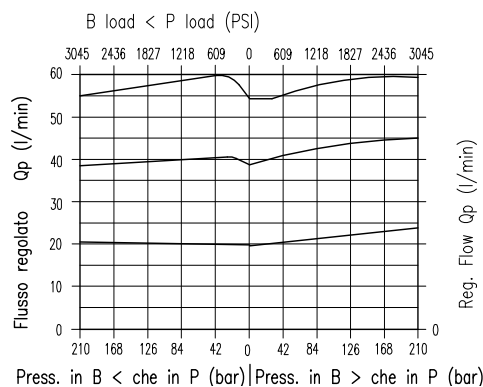
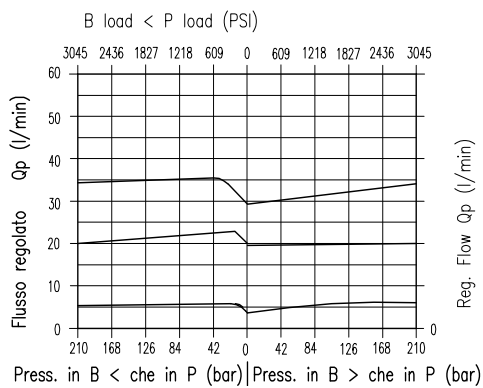
Oil temperature

Recommended filtration

Weight

Weight

Weight

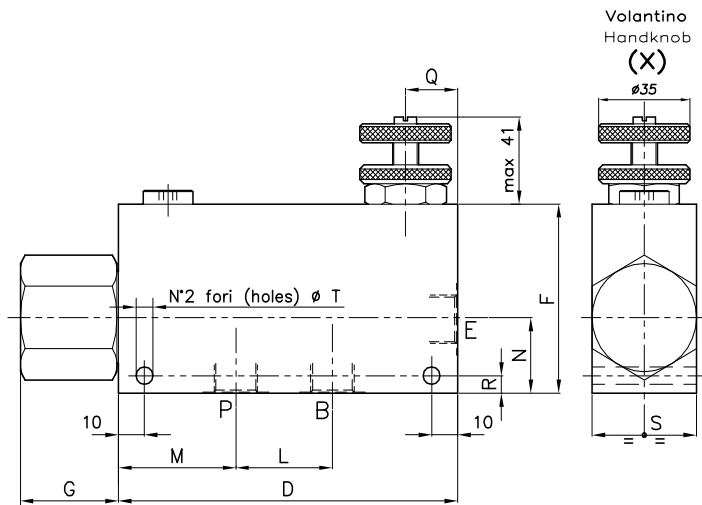


(\*) Per un corretto funzionamento della valvola, nel caso in cui la porta "B" sia in scarico, è necessario avere una pressione in "B" di 6 - 8 bar.

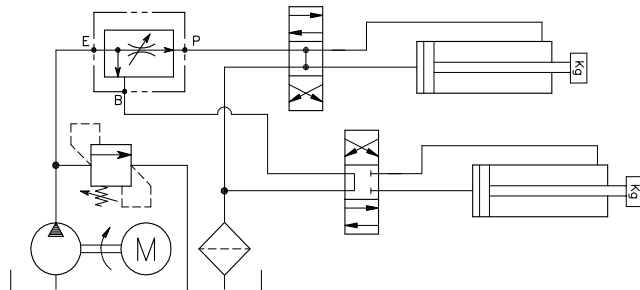
To ensure the proper functioning of the valve, in case the port "B" is in discharge, it is necessary to have a pressure in "B" of 6 - 8 bar.

**Viscosità olio 46 cSt a 50°C / Oil viscosity 46 cSt at 50°C**

**REGOLATORE DI FLUSSO PRIORITARIO CON ECCEDEZZA IN PRESSIONE**  
**PRIORITY FLOW CONTROL COMBINATION STYLE**



**ESEMPIO TIPICO DI CIRCUITO**  
**TYPICAL CIRCUIT EXAMPLE**



**DIMENSIONI**  
**DIMENSIONS**

NUMERO VALVOLA VALVE NUMBER	D	F	G	L	M	N	Q	R	S	T	Attacchi Port size E-P-B GAS (BSPP)	Luce nominale Rated size DN	QP l/min - GPM	QE l/min - GPM
003	130	70	38	37	45	28	20	6.5	40	6.5	3/8"	6	30-7.9	55-14.5
005	130	70	38	37	45	28	20	6.5	40	6.5	1/2"	8	55-14.5	90-23.8
007	155	90	35	44	54	35	25	7.5	50	8.5	3/4"	11	90-23.8	150-39.6

QE = Portata max in entrata "E" - l/min  
 QE = Max admitted inlet flow "E" - l/min

QP = Portata max in uscita prioritario "P" - l/min  
 QP = Max delivery in priority "P" - l/min

**CODICE DI ORDINAZIONE**  
**HOW TO ORDER**

