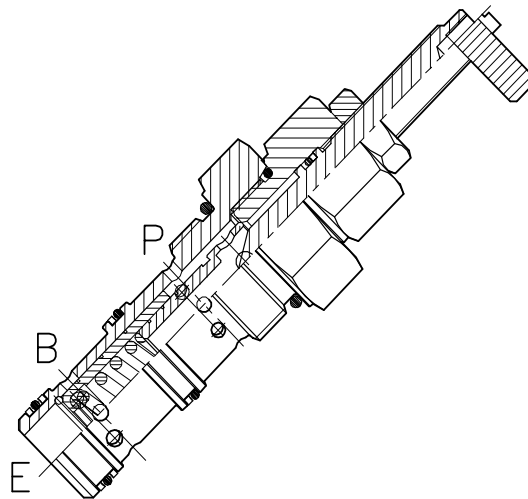
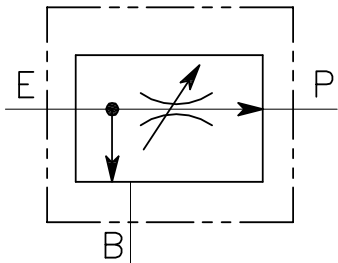


# VRF-C-3V-100-...

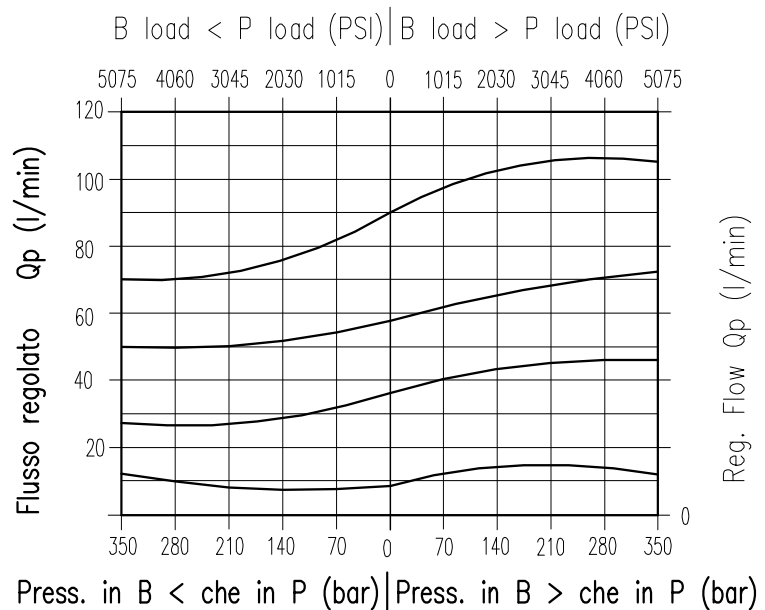


## CARATTERISTICHE

Luce nominale	<b>DN 12</b>
Portata min/max	<b>1/90 l/min - 0.26/23.7 GPM</b>
Pressione di lavoro max.	<b>350 bar - 5075 PSI</b>
Temperatura ambiente	<b>-30°C + 50°C</b>
Temperatura olio	<b>-30°C + 80°C</b>
Filtraggio consigliato	<b>50 micron</b>
Coppia di serraggio	<b>80÷90 Nm</b>
Peso	<b>0.313 Kg</b>

## PERFORMANCE

Rated size
Min/max flow-rate
Max working pressure
Room temperature
Oil temperature
Recommended filtration
Tightening torque
Weight



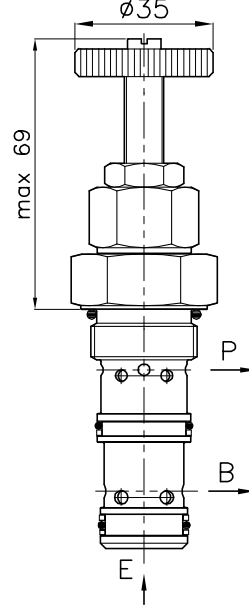
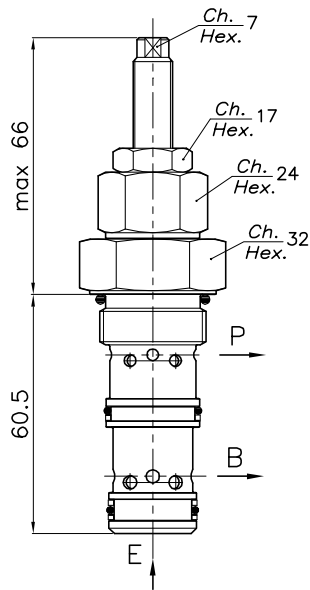
**Viscosità olio 46 cSt a 50°C**  
**Oil viscosity 46 cSt at 50°C**

**REGOLATORE DI FLUSSO PRIORITARIO A CARTUCCIA CON ECCEDENZA IN PRESSIONE**  
**CARTRIDGE STYLE PRIORITY FLOW CONTROL VALVE**

REGOLAZIONE  
ADJUSTMENT

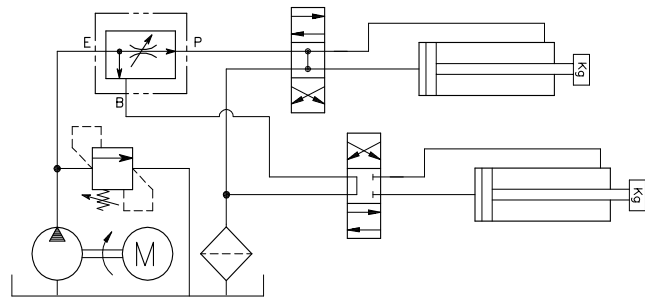
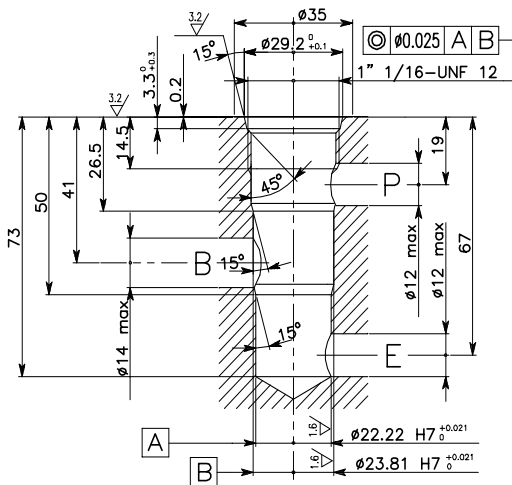
A chiave  
Spanner  
(X)

Volantino  
Handknob  
(Y)



**CAVITA' CAVITY CE.025.N**

**ESEMPIO TIPICO DI CIRCUITO TYPICAL CIRCUIT EXAMPLE**



Si raccomanda l'esatta esecuzione della sede  
The valve seat should be perfectly tooled

**CODICE DI ORDINAZIONE HOW TO ORDER**

004 208 0 X 0

Regolazione Adjustment	
X	A chiave - Spanner
Y	Volantino - handknob
Z	Volantino in alluminio Aluminum handknob