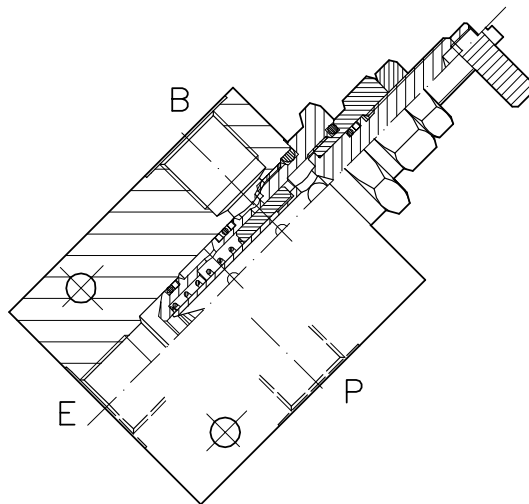
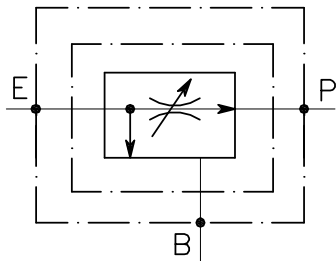


# VRF-CN-3V-C-...-L-...

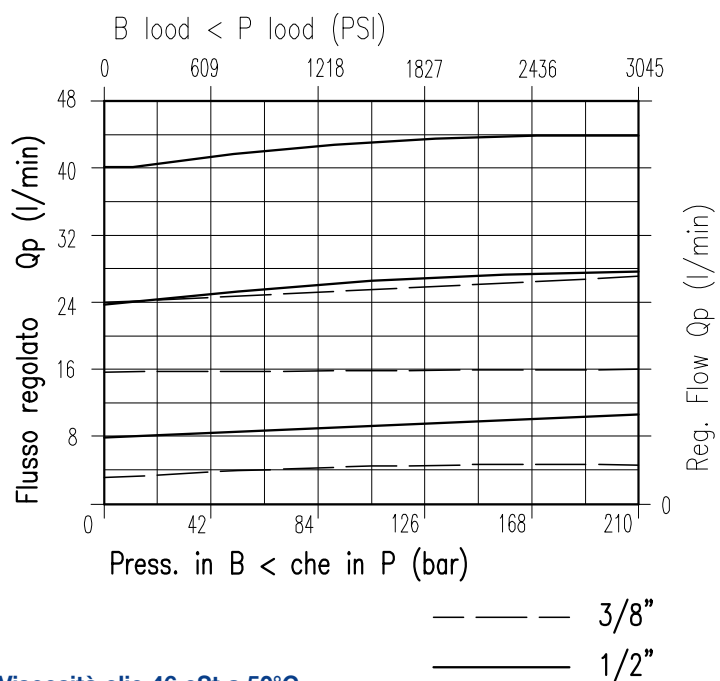


## CARATTERISTICHE

Luce nominale	<b>DN 6</b>
Portata min/max	<b>Vedi tabella/See table</b>
Pressione di lavoro max.	<b>210 bar - 3045 PSI</b>
Temperatura ambiente	<b>-30°C + 50°C</b>
Temperatura olio	<b>-30°C + 80°C</b>
Filtraggio consigliato	<b>50 micron</b>
Peso	<b>0.426 Kg. 3/8" GAS</b>
Peso	<b>0.526 Kg. 1/2" GAS</b>

## PERFORMANCE

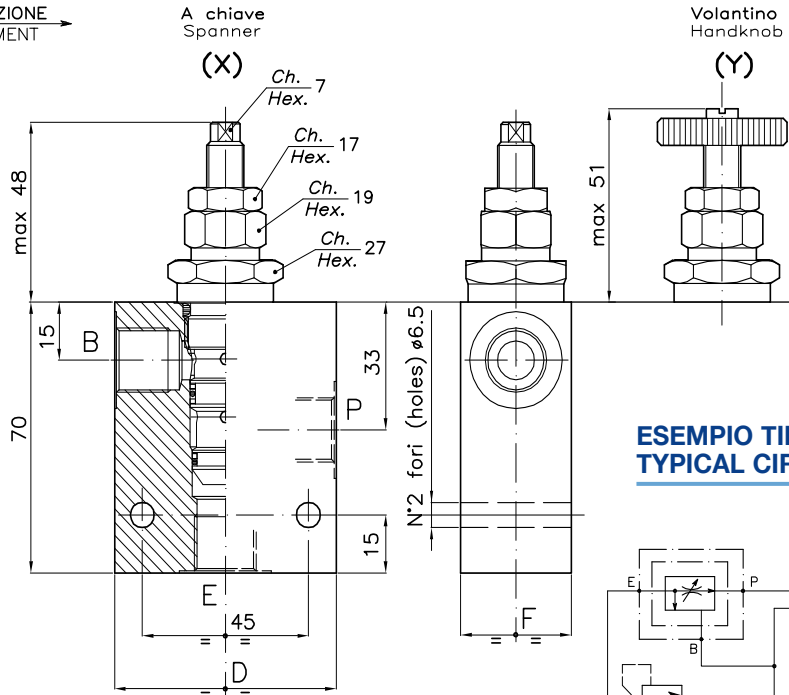
Rated size
Min/max flow-rate
Max working pressure
Room temperature
Oil temperature
Recommended filtration
Weight
Weight



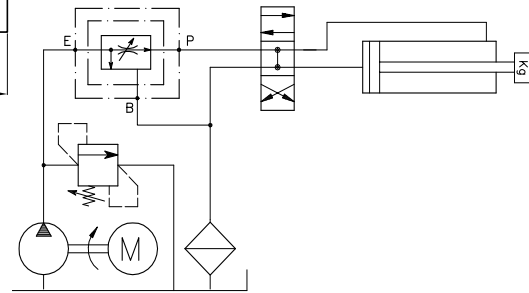
Viscosità olio 46 cSt a 50°C  
Oil viscosity 46 cSt at 50°C

**REGOLATORE DI FLUSSO PRIORITARIO A CARTUCCIA CON ECCEDENZA IN SCARICO E COLLETTORE**  
**CARTRIDGE STYLE FLOW CONTROL VALVE WITH IN LINE BODY**

REGOLAZIONE  
ADJUSTMENT →



**ESEMPIO TIPICO DI CIRCUITO**  
**TYPICAL CIRCUIT EXAMPLE**



**DIMENSIONI**  
**DIMENSIONS**

NUMERO VALVOLA VALVE NUMBER	D	F	Attacchi Port size E-P-B GAS (BSPP)	Portata max Max flow-rate l/min - GPM
016	60	30	3/8"	30-7.9
017	70	35	1/2"	45-11.9

**CODICE DI ORDINAZIONE**  
**HOW TO ORDER**

004 016 0 X 0

Numero valvola / Valve number

016

017

Regolazione  
Adjustment

X A chiave - Spanner

Y Volantino - handknob

Z Volantino in alluminio  
Aluminum handknob