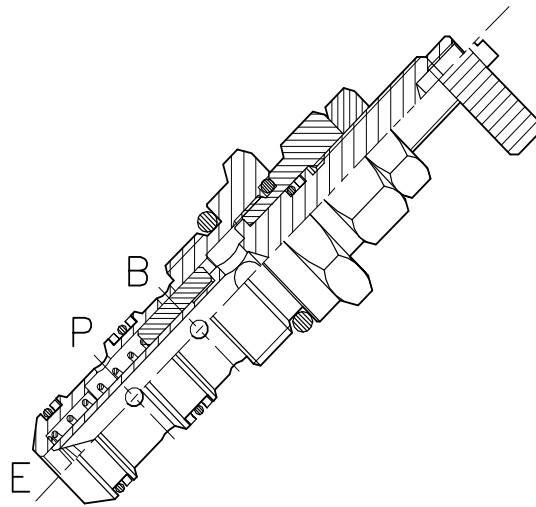
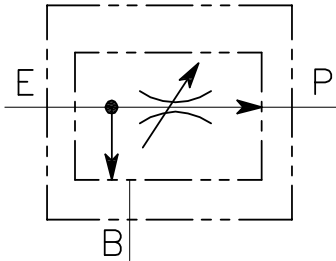


# VRF-CN-3V-...



## CARATTERISTICHE

Luce nominale	<b>DN 8</b>
Portata min/max QE	<b>1/40 L/min - 0,26/10,6 GPM</b>
Portata max. QP	<b>25 L/min - 6,6 GPM</b>
Pressione di lavoro max.	<b>210 bar - 3045 PSI</b>
Temperatura ambiente	<b>-30°C + 50°C</b>
Temperatura olio	<b>-30°C + 80°C</b>
Filtraggio controllato	<b>50 micron</b>
Copia di serraggio	<b>50-60 Nm</b>
Peso	<b>0,157 kg</b>

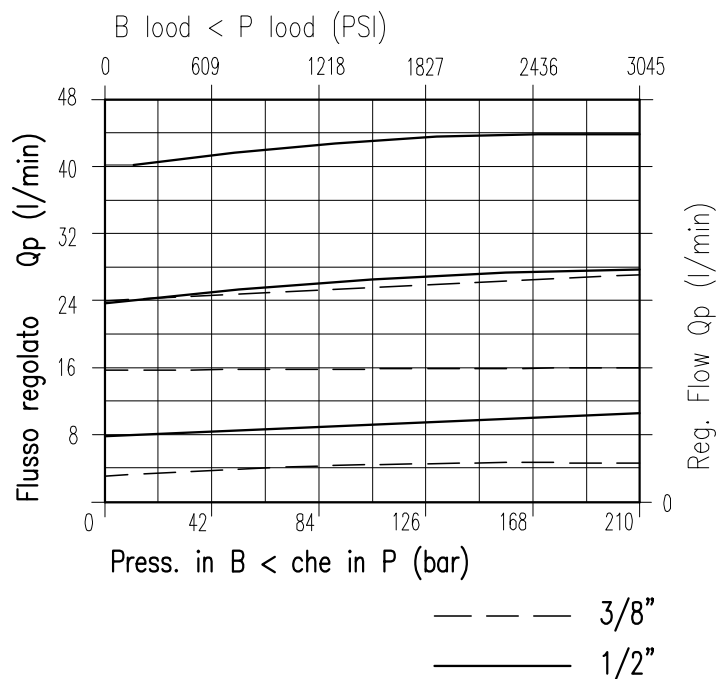
## PERFORMANCE

Size
QE Min/max flow-rate
QP max. flow-rate
Max peak pressure
Room temperature
Oil temperature
Recommended filtration
Tightening torque
Weight

### NOTE:

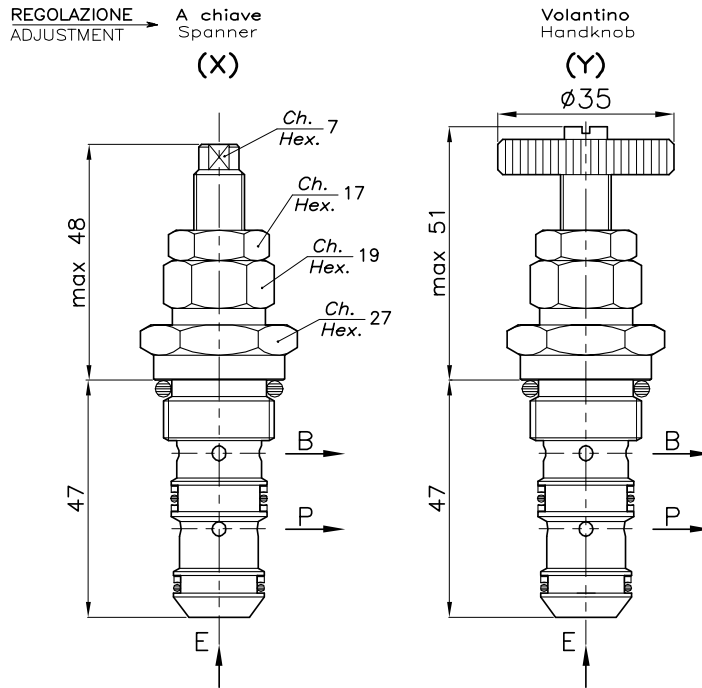
Flusso compensato da E verso P.  
Flusso inverso consentito ma non compensato (funziona in modo strozzato).

Compensated flow from E to P.  
Reverse flow allowed but not compensated (throttle operation)



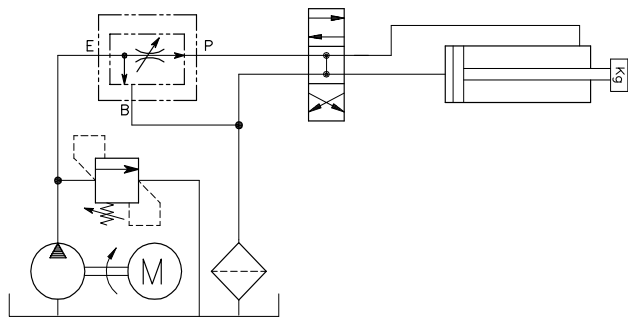
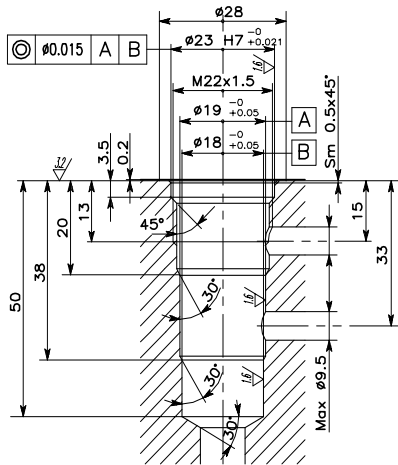
Viscosità olio 46 cSt a 50°C  
Oil viscosity 46 cSt at 50°C

**REGOLATORE DI FLUSSO PRIORITARIO A CARTUCCIA CON ECEDENZA IN SCARICO**  
**CARTRIDGE STYLE PRIORITY FLOW CONTROL VALVE**



**CAVITA' CAVITY CE.017.N**

**ESEMPIO TIPICO DI CIRCUITO TYPICAL CIRCUIT EXAMPLE**



Si raccomanda l'esatta esecuzione della sede  
 The valve seat should be perfectly toolled

**CODICE DI ORDINAZIONE HOW TO ORDER**

004 001 0 X 0

Regolazione Adjustment	
X	A chiave - Spanner
Y	Volantino - handknob
Z	Volantino in alluminio Aluminum handknob