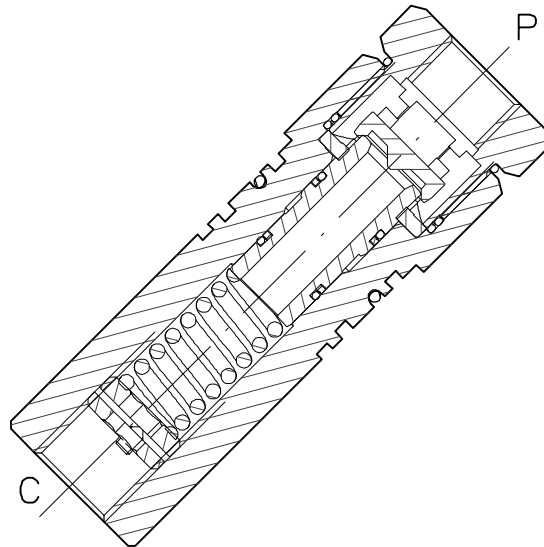
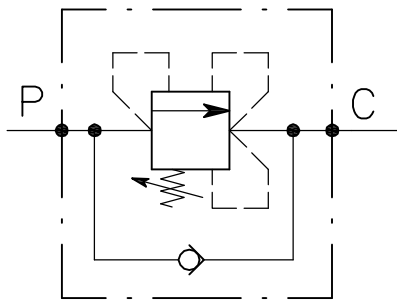


VSQ-CC-100-12-L

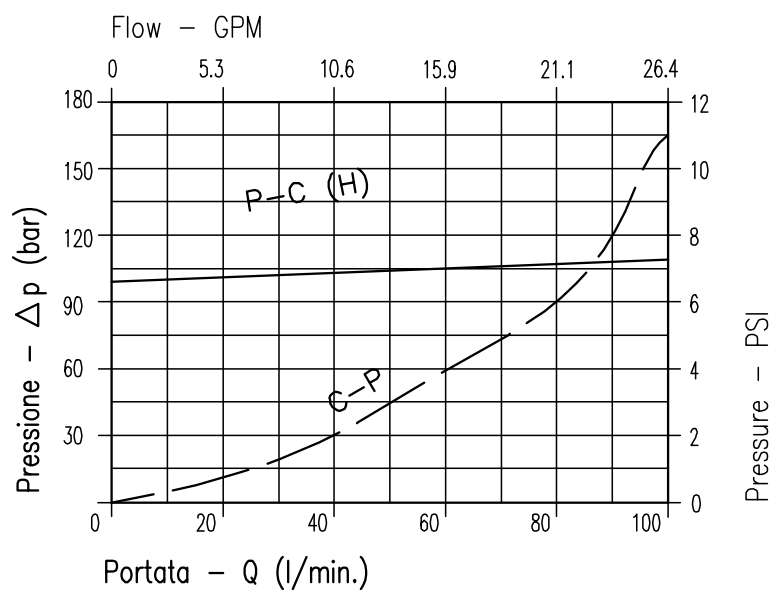


CARATTERISTICHE

Luce nominale	DN 10
Portata min/max	100 l/min - 26.42 GPM
Pressione di lavoro max.	350 bar - 5075 PSI
Pressione max. di taratura	140 bar - 2030 PSI
Temperatura ambiente	-30°C + 50°C
Temperatura olio	-30°C + 80°C
Filtraggio consigliato	30÷50 micron
Peso	0.8 Kg

PERFORMANCE

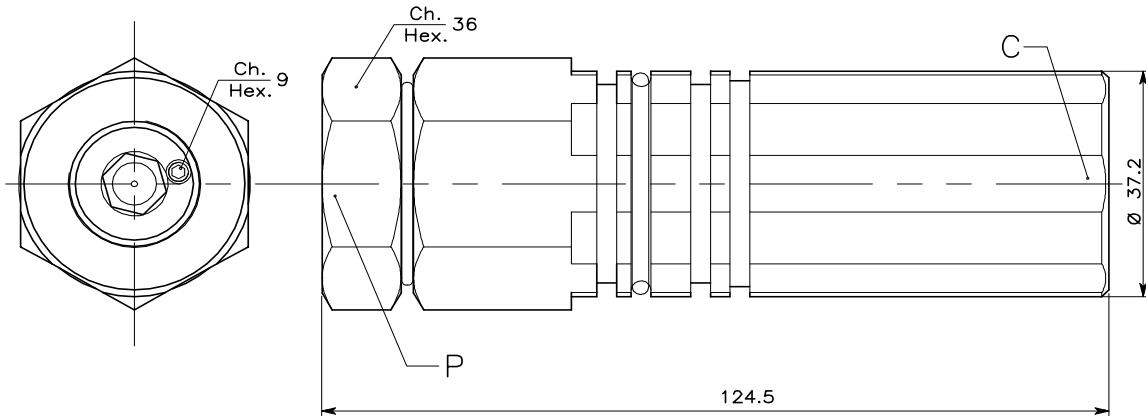
Rated size
Min/max flow-rate
Max working pressure
Max setting pressure
Room temperature
Oil temperature
Recommended filtration
Weight



Viscosità olio 46 cSt a 50°C
Oil viscosity 46 cSt at 50°C

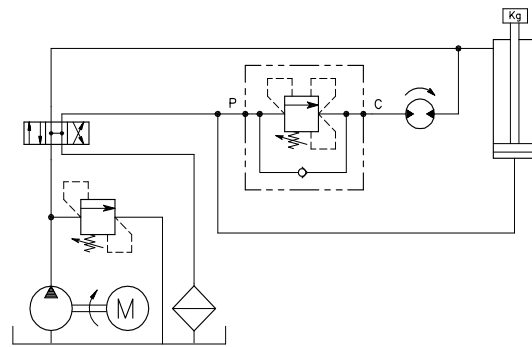
VALVOLA DI SEQUENZA COMPENSATA AD AZIONE DIRETTA CON INSTALLAZIONE IN LINEA
IN LINE, DIRECT ACTING, SELF COMPENSATED SEQUENCE VALVE

REGOLAZIONE
ADJUSTMENT →



ESEMPIO TIPICO DI CIRCUITO
TYPICAL CIRCUIT EXAMPLE

Attacchi
Port size
P-C
GAS (BSPP)
1/2"



CODICE DI ORDINAZIONE
HOW TO ORDER

002 794 0 X 0

Molle
Springs

0 Campo taratura 20÷140 bar
(colore giallo)
Setting range 20÷140 bar
(yellow)

Corpo in acciaio zincato
Zinc plated steel body