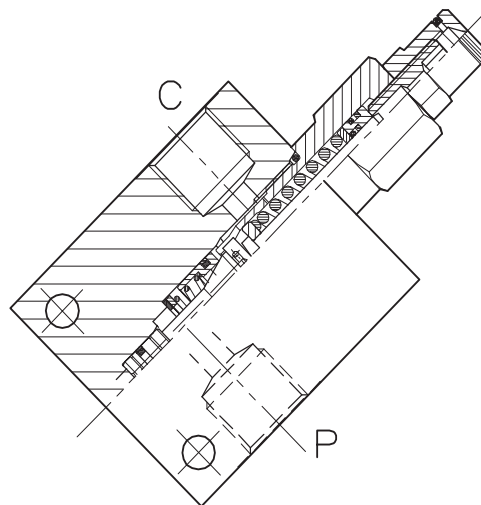
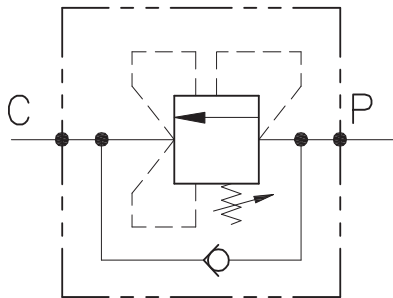


# VSQ-D-C-...-CC-...

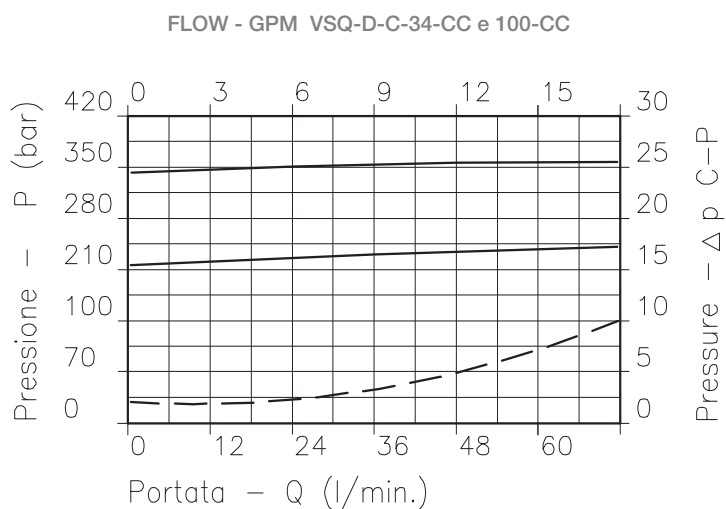


## CARATTERISTICHE

Luce nominale min/max	<b>DN 12/14</b>
Portata min/max	<b>1/160 l/min - 0.26/48 GPM</b>
Pressione di lavoro max.	<b>350 bar - 5075 PSI</b>
Pressione max. di taratura	<b>350 bar - 5075 PSI</b>
Temperatura ambiente	<b>-30°C + 50°C</b>
Temperatura olio	<b>-30°C + 80°C</b>
Filtraggio consigliato	<b>30 micron</b>

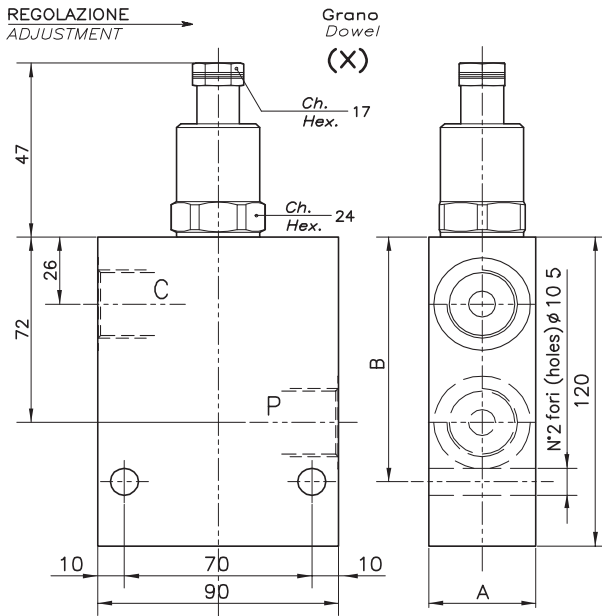
## PERFORMANCE

Min/max rated size
Min/max flow-rate
Max working pressure
Max setting pressure
Room temperature
Oil temperature
Recommended filtration

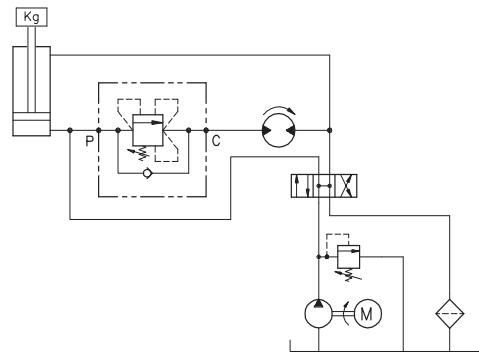


Viscosità olio 46 cSt a 50°C  
Oil viscosity 46 cSt at 50°C

**VALVOLA DI SEQUENZA PER CENTRO CHIUSO AD AZIONE DIFFERENZIALE**  
**SEQUENCE COMPENSATED DIFFERENTIAL AREA PISTON TYPE VALVE**



**ESEMPIO TIPICO DI CIRCUITO**  
**TYPICAL CIRCUIT EXAMPLE**



**DIMENSIONI**  
**DIMENSIONS**

Campo taratura Setting range	A	B	Attacchi Port size P-C GAS (BSPP)	Luce nominale Rated size DN	Portata max Max flow-rate l/min - GPM
696	40	95	3/4"	12	120-31
697	50	107	1"	14	160-42

**CODICE DI ORDINAZIONE**  
**HOW TO ORDER**

002      696      0      X      0

Campo taratura / Setting range

696

---

697

---

Campo taratura 60÷350 bar  
(molla colore giallo)  
Setting range 60÷350 bar  
(yellow spring)

---

Taratura standard (Q=5 l/1') Std. bar setting (Q=5 l/1') <b>250 bar</b>	Incr. press. - bar giro/vite Pressure rise - turn of screw <b>(--)</b>
---	--

Regolazione  
Adjustment

X | Grano - Dowel

---

Collettore in alluminio  
Aluminum manifold