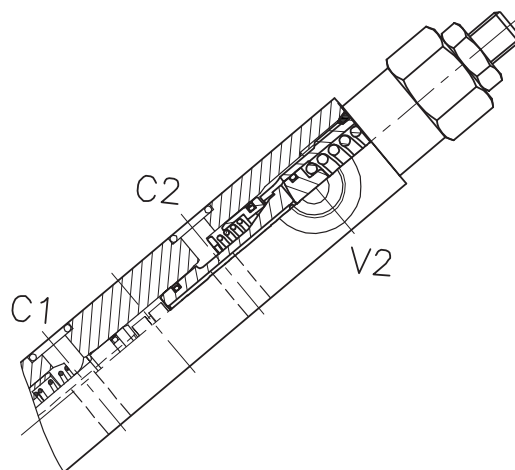
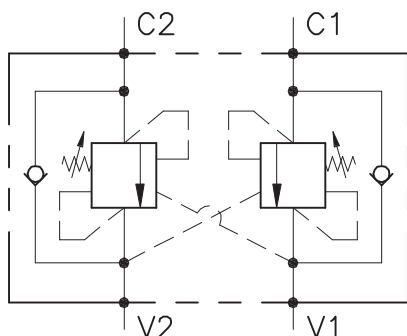


# WB-DE-...-LU-FC2-OIL-...-...



## CARATTERISTICHE

Luce nominale  
 Portata min/max  
 Pressione max. di picco  
 Pressione max. di taratura  
 Rapporto di pilotaggio standard  
 Temperatura ambiente  
 Temperatura olio  
 Filtraggio consigliato

**DN 8/10**  
**1/60 l/min - 0.26/15.9 GPM**  
**350 bar - 5075 PSI**  
**350 bar - 5075 PSI**  
**Vedi tab. / See tab.**  
**-30°C + 50°C**  
**-30°C + 80°C**  
**30 micron**

## PERFORMANCE

Rated size  
 Min/max flow-rate  
 Max peak pressure  
 Max setting pressure  
 Standard pilot ratio  
 Room temperature  
 Oil temperature  
 Recommended filtration

### NOTE:

La taratura deve essere **1.3** volte maggiore della pressione indotta dal carico.

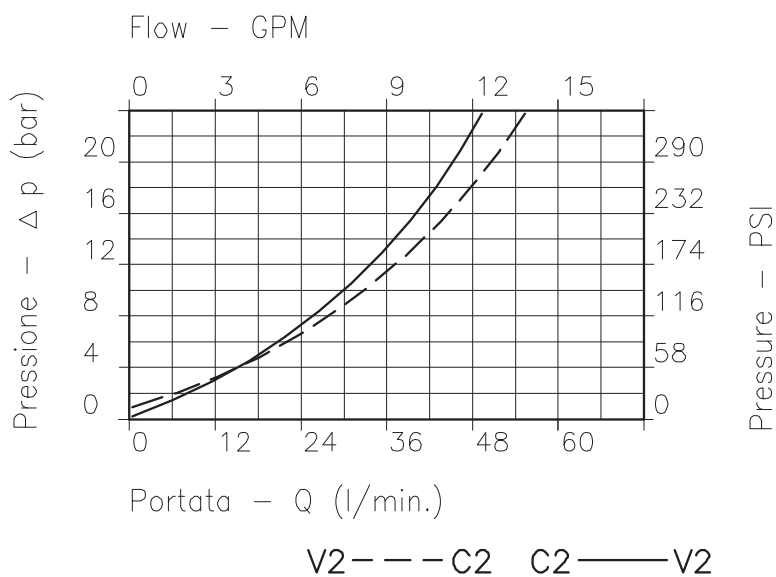
Valve should be set at **1.3** times load induced pressure.

### ESEMPIO/EXAMPLE:

Pressione di lavoro max:

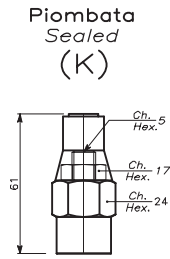
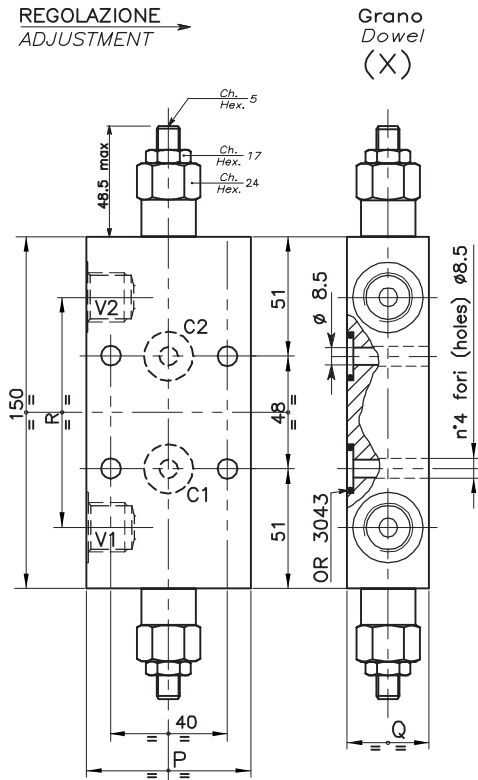
Max working pressure:

**350 bar / 1.3 = 270 bar**

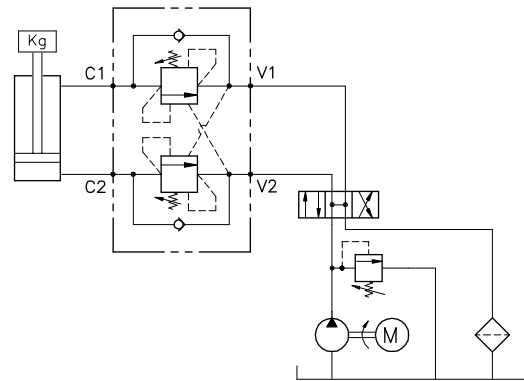


Viscosità olio 46 cSt a 50°C  
 Oil viscosity 46 cSt at 50°C

**VALVOLA BILANCIAMENTO, BLOCCO E CONTROLLO MOVIMENTO A DOPPIO EFFETTO CON COLLETTORE FLANGIATO**  
**DOUBLE COUNTERBALANCE VALVE WITH FLANGEABLE BODY**



**ESEMPIO TIPICO DI CIRCUITO**  
**TYPICAL CIRCUIT EXAMPLE**



**DIMENSIONI**  
**DIMENSIONS**

Campo taratura Setting range		P	Q	R	Attacchi Port size V2-V1 GAS (BSPP)	Portata max Max flow-rate l/min - GPM
047	026	55	29.5	109.5	3/8"	40-10
889	680	55	29.5	112	3/8"	40-10
049	028	65	34.5	112	1/2"	60-15

**CODICE DI ORDINAZIONE**  
**HOW TO ORDER**

**N01 . 047 . 0 X 0 . A**

Campo taratura / Setting range			
047		026	
889		680	
049		028	
Campo taratura 30÷220 bar (molla colore verde)		Campo taratura 60÷350 bar (molla colore giallo)	
Setting range 30÷220 bar (green spring)		Setting range 60÷350 bar (yellow spring)	
Taratura standard (Q=5 l/1')	Incr. press. - bar giro/vite	Taratura standard (Q=5 l/1')	Incr. press. - bar giro/vite
Std. bar setting (Q=5 l/1')	Pressure rise - turn of screw	Std. bar setting (Q=5 l/1')	Pressure rise - turn of screw
<b>180 bar</b>	<b>(50)</b>	<b>250 bar</b>	<b>(90)</b>

Rapporto di pilotaggio Pilot ratios	Regolazione Adjustment	Collettore Body
O 4.25: 1 D 8: 1	X Grano - Dowel K Piombata - Sealed	A Acciaio zincato Zinc plated steel