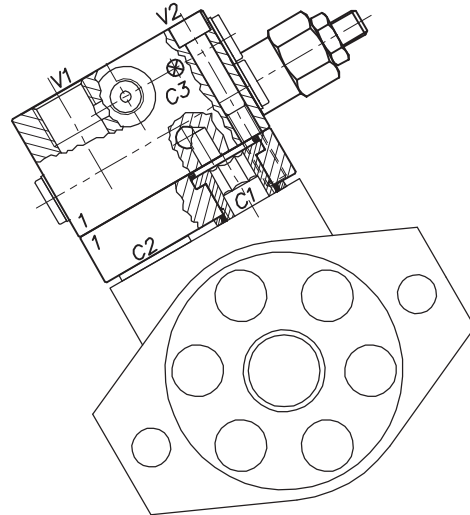
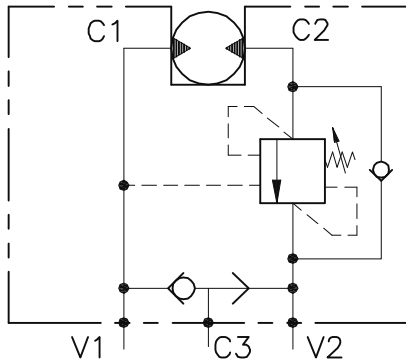


# WB-M-SE-VFF-...-12-14-...



## CARATTERISTICHE

Luce nominale  
 Portata min/max  
 Pressione max. di picco  
 Pressione max. di taratura  
 Rapporto di pilotaggio standard  
 Temperatura ambiente  
 Temperatura olio  
 Filtraggio consigliato  
 Coppia di serraggio

**DN 10**  
**1/60 l/min - 0.26/15.9 GPM**  
**350 bar - 5075 PSI**  
**220 bar - 3190 PSI**  
**Vedi tab. / See tab.**  
**-30°C + 50°C**  
**-30°C + 80°C**  
**30 micron**  
**110÷115 Nm**

## PERFORMANCE

Rated size  
 Min/max flow-rate  
 Max peak pressure  
 Max setting pressure  
 Standard pilot ratio  
 Room temperature  
 Oil temperature  
 Recommended filtration  
 Tightening torque

### NOTE:

La taratura deve essere **1.3** volte maggiore della pressione indotta dal carico.

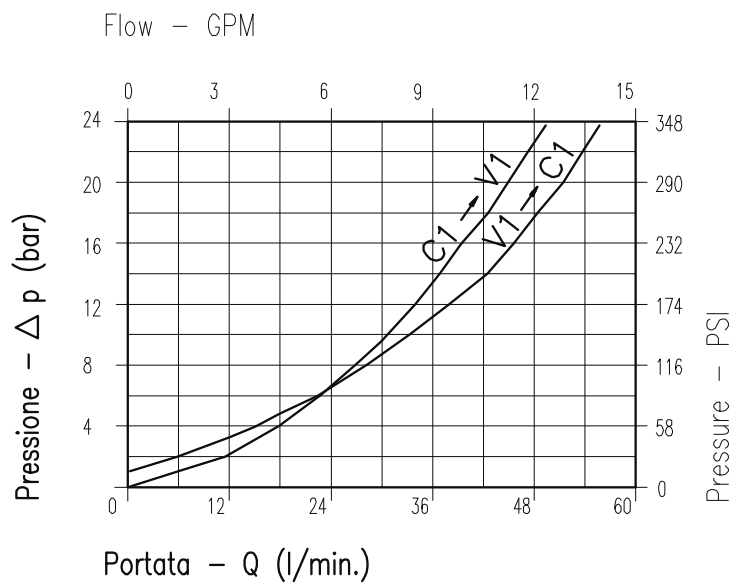
Valve should be set at **1.3** times load induced pressure.

### ESEMPIO/EXAMPLE:

Pressione di lavoro max:

Max working pressure:

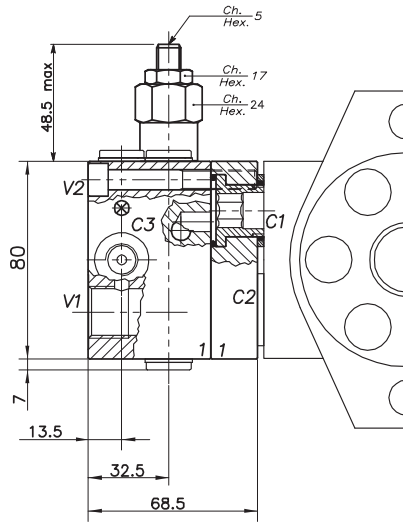
**350 bar / 1.3 = 270 bar**



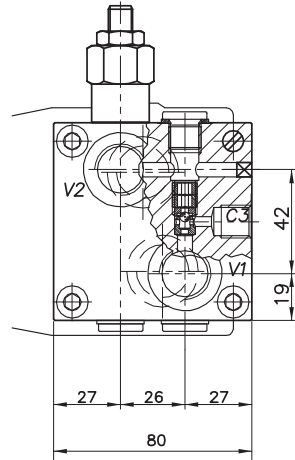
Viscosità olio 46 cSt a 50°C  
 Oil viscosity 46 cSt at 50°C

# VALVOLA BILANCIAMENTO BLOCCO E CONTROLLO MOVIMENTO A SEMPLICE EFFETTO FLANGIATA MOTORE SINGLE COUNTERBALANCE MOTOR FLANGEABLE VALVE

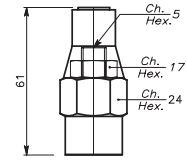
REGOLAZIONE  
ADJUSTMENT



Grano  
Dowel  
(X)



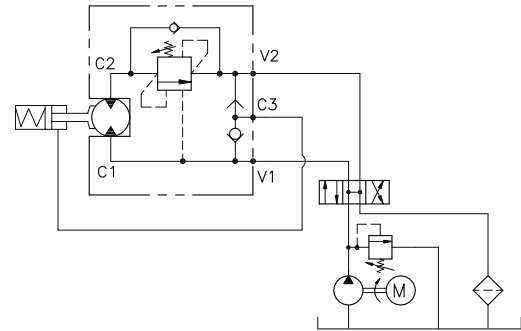
Piombata  
Sealed  
(K)



## DIMENSIONI DIMENSIONS

## ESEMPIO TIPICO DI CIRCUITO TYPICAL CIRCUIT EXAMPLE

Campo taratura Setting range	Attacchi Port size V2-C2 V1-C1 GAS (BSPP)	Attacchi Port size C3 GAS (BSPP)	Tipo motore Motor type
533	1/2"	1/4"	Samhydraulik HPR-HPRC Danfoss OMS (32x2)
535	1/2"	1/4"	Danfoss OMR-OMP (36x36)
545	1/2"	1/4"	TRW MAC/MAF (45,7)
618	1/2"	1/4"	Samhydraulik AG-BG-AR (40x8)



## CODICE DI ORDINAZIONE HOW TO ORDER

N01 . 533 . 0 X 0

Campo taratura / Setting range

533

535

545

618

Campo taratura 30÷220 bar  
(molla colore verde)

Setting range 30÷220 bar  
(green spring)

Taratura standard  
(Q=5 l/1')

Std. bar setting  
(Q=5 l/1')

180 bar

Incr. press. -  
bar giro/vite

Pressure rise -  
turn of screw

(50)

Rapporto  
di pilotaggio  
Pilot ratios

O 4.25: 1

D 8: 1

Regolazione  
Adjustment

X Grano - Dowel

K Piombata - Sealed

Collettore in alluminio  
Aluminum manifold