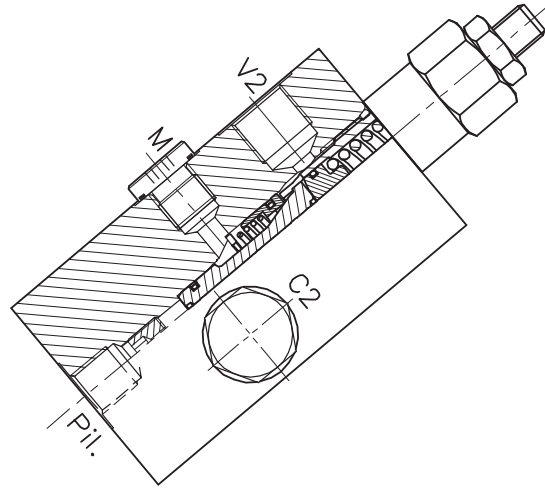
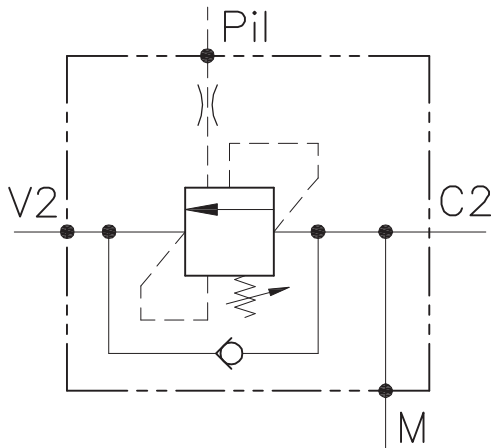


# WB-SE-...-14FCB-...-...



## CARATTERISTICHE

|                                 |                                   |
|---------------------------------|-----------------------------------|
| Luce nominale                   | <b>DN 8/10</b>                    |
| Portata min/max                 | <b>1/60 l/min - 0.26/15.9 GPM</b> |
| Pressione max. di picco         | <b>450 bar - 6525 PSI</b>         |
| Pressione max. di taratura      | <b>350 bar - 5075 PSI</b>         |
| Rapporto di pilotaggio standard | <b>4.25: 1</b>                    |
| Temperatura ambiente            | <b>-30°C + 50°C</b>               |
| Temperatura olio                | <b>-30°C + 80°C</b>               |
| Filtraggio consigliato          | <b>30 micron</b>                  |

## PERFORMANCE

|                        |
|------------------------|
| Rated size             |
| Min/max flow-rate      |
| Max peak pressure      |
| Max setting pressure   |
| Standard pilot ratio   |
| Room temperature       |
| Oil temperature        |
| Recommended filtration |

### NOTE:

La taratura deve essere **1.3** volte maggiore della pressione indotta dal carico.

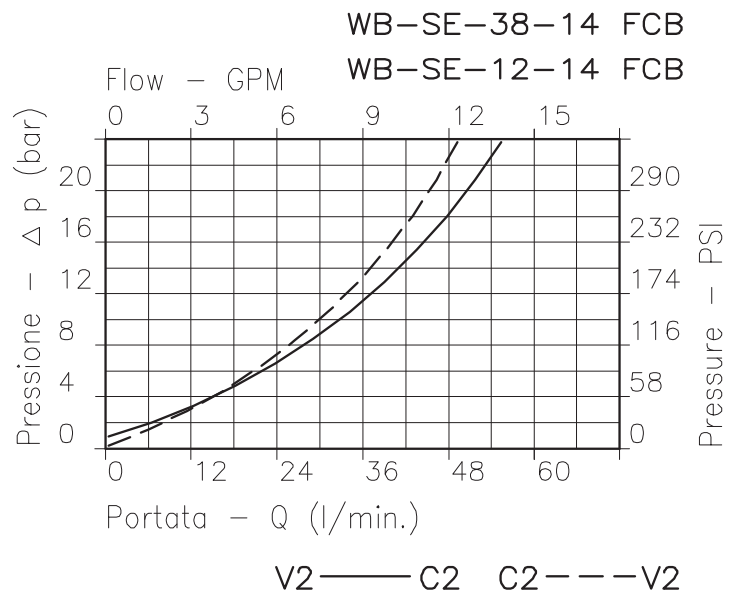
Valve should be set at **1.3** times load induced pressure.

### ESEMPIO/EXAMPLE:

Pressione di lavoro max:

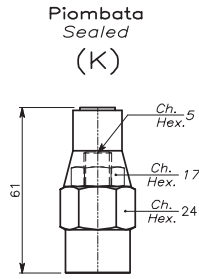
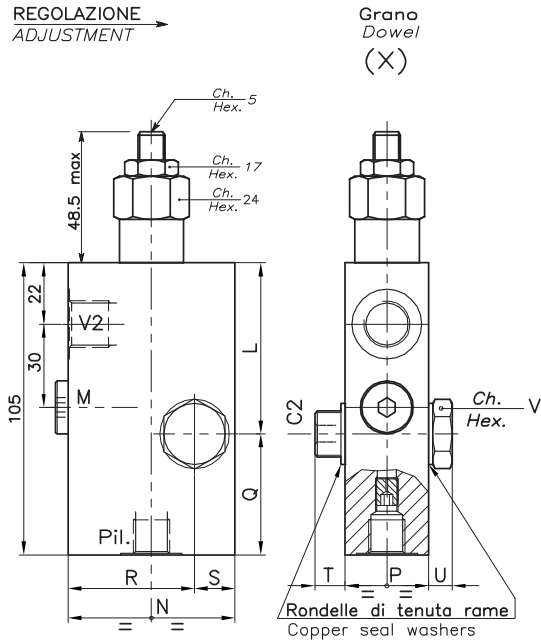
Max working pressure:

**350 bar / 1.3 = 270 bar**

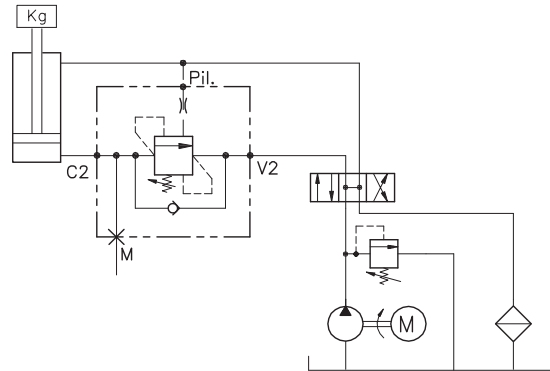


Viscosità olio 46 cSt a 50°C  
Oil viscosity 46 cSt at 50°C

# VALVOLA BILANCIAMENTO, BLOCCO E CONTROLLO MOVIMENTO A SEMPLICE EFFETTO CON COLLETTORE FLANGIATO SINGLE COUNTERBALANCE VALVE WITH FLANGEABLE BODY



## ESEMPIO TIPICO DI CIRCUITO TYPICAL CIRCUIT EXAMPLE



## DIMENSIONI DIMENSIONS

| Campo taratura<br>Setting range |     | L    | N  | P    | Q    | R  | S  | T  | U | V  | Attacchi<br>Port size<br>V2-C2<br>GAS (BSPP) | Attacchi<br>Port size<br>M-PIL<br>GAS (BSPP) | Portata max<br>Max flow-rate<br>l/min - GPM |
|---------------------------------|-----|------|----|------|------|----|----|----|---|----|--|--|---|
| 613                             | 614 | 61.5 | 60 | 29.5 | 43,5 | 46 | 14 | 12 | 8 | 22 | 3/8"   | 1/4"   | 40-10                                       |
| 615                             | 616 | 63   | 70 | 34.5 | 42   | 55 | 15 | 12 | 8 | 27 | 1/2"   | 1/4"   | 60-15                                       |

## CODICE DI ORDINAZIONE HOW TO ORDER

N01 . 613 . 0 X 0 . A

| Campo taratura / Setting range  |                                  |   |                                  | Rapporto di pilotaggio<br>Pilot ratios                          | Regolazione<br>Adjustment | Collettore<br>Body                     |
|---|----------------------------------|---|----------------------------------|---|---------------------------|--|
| 613   |                                  | 614   |                                  | A Ø 0,7 mm  | X Grano - Dowel           | A Acciaio zincato<br>Zinc plated steel |
| 615   |                                  | 616   |                                  | B Ø 1 mm  | K Piombata - Sealed       |  |
| Campo taratura 30÷220 bar<br>(molla colore verde)<br>Setting range 30÷220 bar<br>(green spring) |                                  | Campo taratura 60÷350 bar<br>(molla colore giallo)<br>Setting range 60÷350 bar<br>(yellow spring) |                                  | C Ø 1,2 mm  |                           |  |
| Taratura standard<br>(Q=5 l/1')   | Incr. press. -<br>bar giro/vite  | Taratura standard<br>(Q=5 l/1')   | Incr. press. -<br>bar giro/vite  | D Senza grano<br>Without dowel<br>Rapp.pilot<br>Pilot Ratio 8:1 |                           |  |
| Std. bar setting<br>(Q=5 l/1')  | Pressure rise -<br>turn of screw | Std. bar setting<br>(Q=5 l/1')  | Pressure rise -<br>turn of screw | O Senza grano<br>Without dowel                                  |                           |  |
| 180 bar   | (50)                             | 250 bar   | (90)                             |   |                           |  |
| 613   |                                  | Collettore possibile in AL togliendo "A"  |                                  |   |                           |  |
| 614   |                                  | Available aluminium body without "A"  |                                  |   |                           |  |