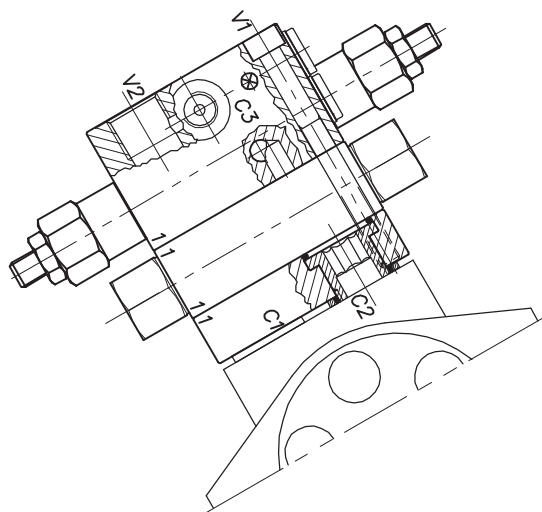
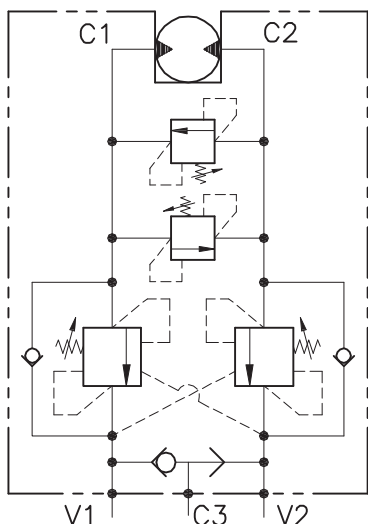


# WB-M-DE-VFF-...-12-14-...



## CARATTERISTICHE

Luce nominale  
 Portata min/max  
 Pressione max. di picco  
 Pressione max. di taratura  
 Rapporto di pilotaggio standard  
 Temperatura ambiente  
 Temperatura olio  
 Filtraggio consigliato  
 Coppia di serraggio

### DN 10

1/60 l/min - 0.26/15.9 GPM

350 bar - 5075 PSI

220 bar - 3190 PSI

Vedi tab. / See tab.

-30°C + 50°C

-30°C + 80°C

30 micron

110÷115 Nm

## PERFORMANCE

Rated size  
 Min/max flow-rate  
 Max peak pressure  
 Max setting pressure  
 Standard pilot ratio  
 Room temperature  
 Oil temperature  
 Recommended filtration  
 Tightening torque

### NOTE:

La taratura deve essere **1.3** volte maggiore della pressione indotta dal carico.

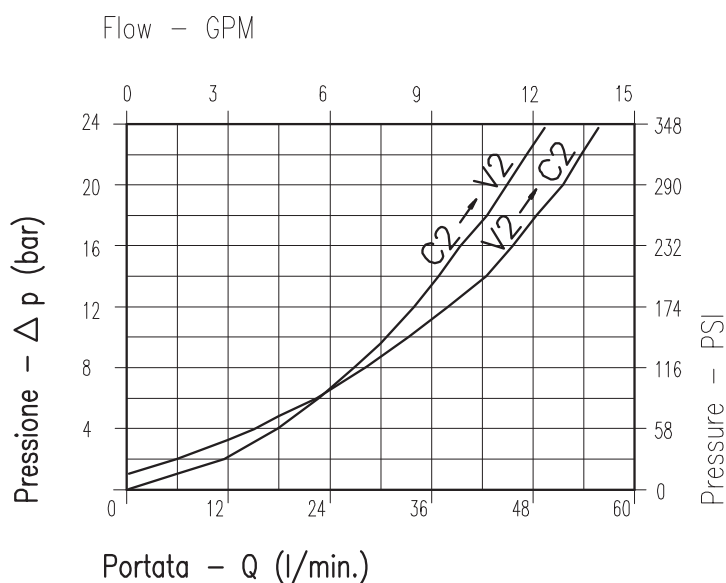
Valve should be set at **1.3** times load induced pressure.

### ESEMPIO/EXAMPLE:

Pressione di lavoro max:

Max working pressure:

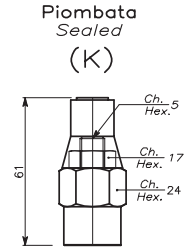
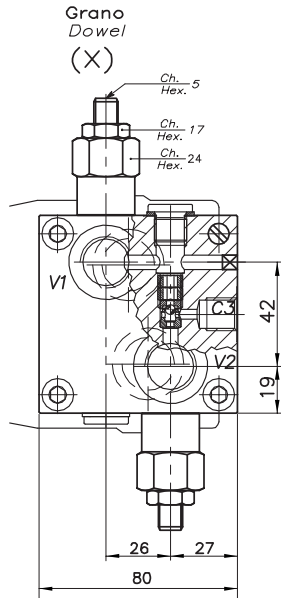
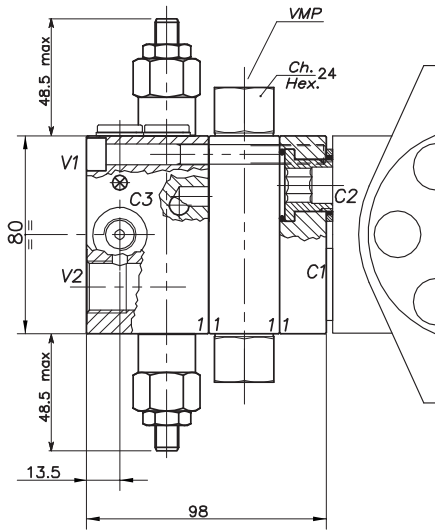
**350 bar / 1.3 = 270 bar**



Viscosità olio 46 cSt a 50°C  
 Oil viscosity 46 cSt at 50°C

**VALVOLA BILANCIAMENTO, BLOCCO E CONTROLLO MOVIMENTO  
A DOPPIO EFFETTO FLANGIATA MOTORE CON VALVOLE DI MASSIMA**  
**DOUBLE COUNTERBALANCE MOTOR FLANGEABLE VALVE WITH RELIEF VALVES**

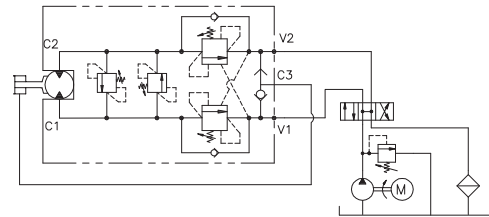
REGOLAZIONE  
ADJUSTMENT



**DIMENSIONI  
DIMENSIONS**

**ESEMPIO TIPICO DI CIRCUITO  
TYPICAL CIRCUIT EXAMPLE**

Campo taratura Setting range	Attacchi Port size V2-C2 V1-C1 GAS (BSPP)	Attacchi Port size C3 GAS (BSPP)	Tipo motore Motor type
440	1/2"	1/4"	Samhydraulik AG-BG-AR (40x8) FSH
441	1/2"	1/4"	Olidrive (44x17) FOLD
442	1/2"	1/4"	Samhydraulik HPR-HPRC Danfoss OMS (32x22) FOMS
443	1/2"	1/4"	Danfoss OMR-OMP (36x36) FOMR-OMP
888	1/2"	1/4"	Char-Lynn 45,7



**CODICE DI ORDINAZIONE  
HOW TO ORDER**

N01 . 440 . 0 X 0

Campo taratura / Setting range
440
441
442
443
888

Campo taratura 30÷220 bar  
(molla colore verde)

Setting range 30÷220 bar  
(green spring)

Taratura standard  
(Q=5 l/1')  
Std. bar setting  
(Q=5 l/1')  
**180 bar**

Incr. press. -  
bar giro/vite  
Pressure rise -  
turn of screw  
**(50)**

Rapporto di pilotaggio Pilot ratios
O 4.25: 1
D 8: 1

Regolazione Adjustment
X Grano - Dowel
K Piombata - Sealed

Collettore in alluminio  
Aluminum manifold