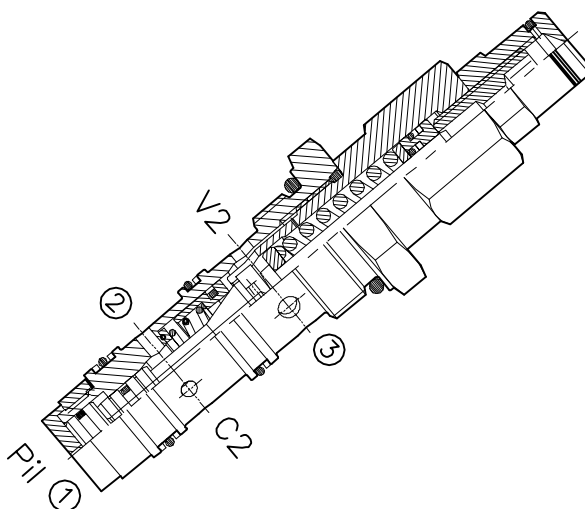
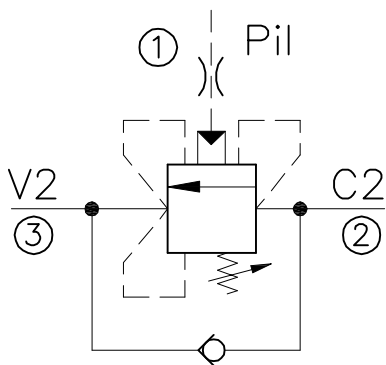


# WBC-40-CC-RPV 9-...



## CARATTERISTICHE

Luce nominale  
 Portata min/max  
 Pressione max. di picco  
 Pressione max. di taratura  
 Rapporto di pilotaggio standard  
 Temperatura ambiente  
 Temperatura olio  
 Filtraggio consigliato  
 Coppia di serraggio  
 Peso

**DN 10**  
**1/60 l/min - 0.26/15.9 GPM**  
**450 bar - 6525 PSI**  
**350 bar - 5075 PSI**  
**9: 1**  
**-30°C + 50°C**  
**-30°C + 80°C**  
**30 micron**  
**116÷128 Nm**  
**0.300 Kg**

## PERFORMANCE

Rated size  
 Min/max flow-rate  
 Max peak pressure  
 Max setting pressure  
 Standard pilot ratio  
 Room temperature  
 Oil temperature  
 Recommended filtration  
 Tightening torque  
 Weight

### NOTE:

La taratura deve essere **1.3** volte maggiore della pressione indotta dal carico.

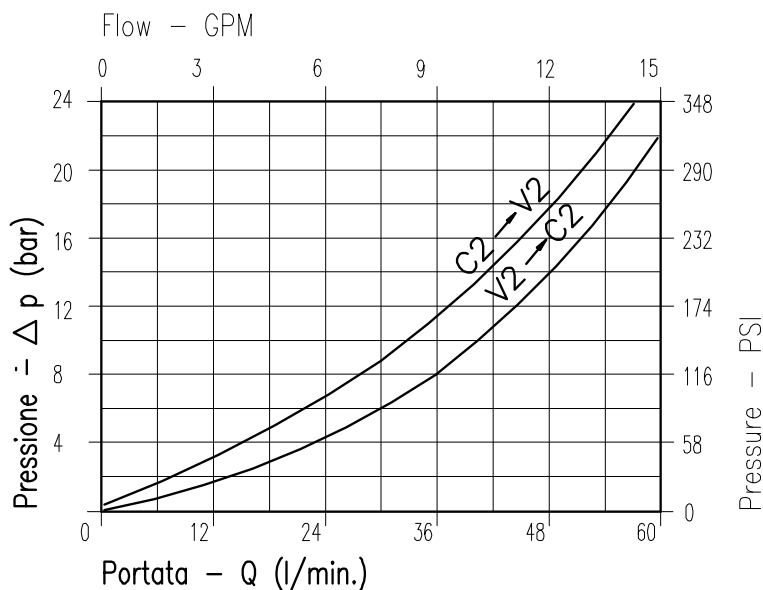
Valve should be set at **1.3** times load induced pressure.

### ESEMPIO/EXAMPLE:

Pressione di lavoro max:

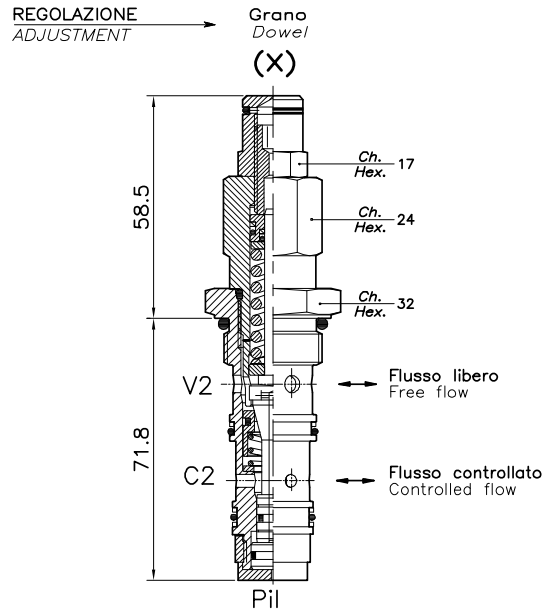
Max working pressure:

**350 bar / 1.3 = 270 bar**



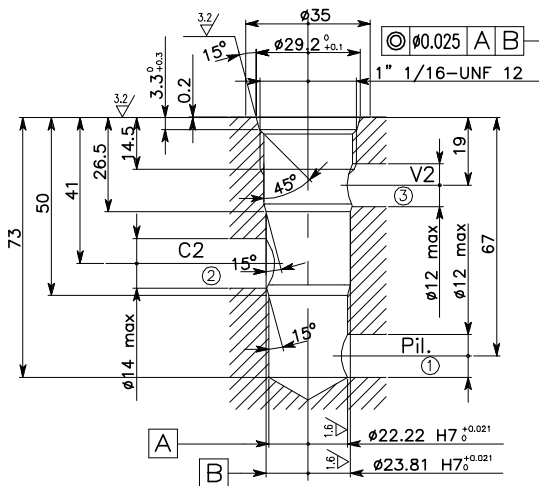
Viscosità olio 46 cSt a 50°C  
 Oil viscosity 46 cSt at 50°C

# VALVOLA BILANCIAMENTO, BLOCCO E CONTROLLO MOVIMENTO PER CENTRO CHIUSO A CARTUCCIA CARTRIDGE STYLE COUNTERBALANCE VALVE FOR CLOSED CENTRE SPOOL

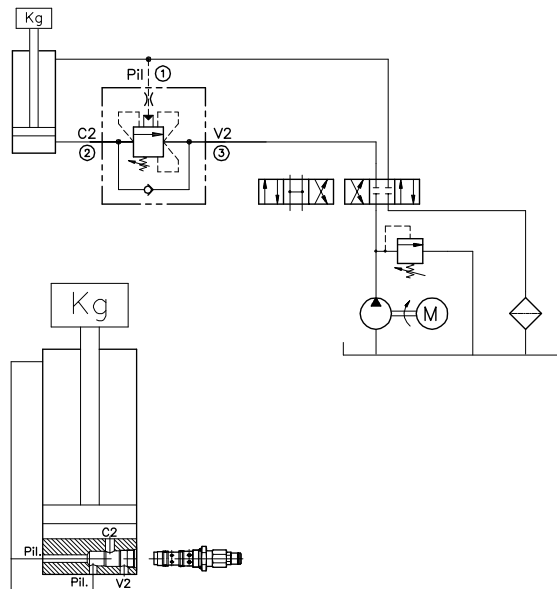


## CAVITÀ CAVITY

**CE.025.N**



## ESEMPIO TIPICO DI CIRCUITO TYPICAL CIRCUIT EXAMPLE



Si raccomanda l'esatta esecuzione della sede  
The valve seat should be perfectly tooled

## CODICE DI ORDINAZIONE HOW TO ORDER

**001.011 . 0 X 0**

Campo taratura / Setting range <b>011</b>		Rapporto di pilotaggio Pilot ratios 0   9: 1	Regolazione Adjustment X   Grano - Dowel
Campo taratura 60÷350 bar (molla colore rosso) Setting range 60÷350 bar (red spring)			
Taratura standard (Q=5 l/1') Std. bar setting (Q=5 l/1') <b>250 bar</b>	Incr. press. - bar giro/vite Pressure rise - turn of screw <b>(140)</b>		