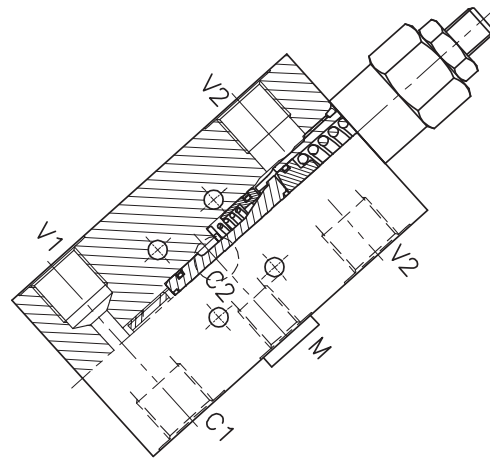
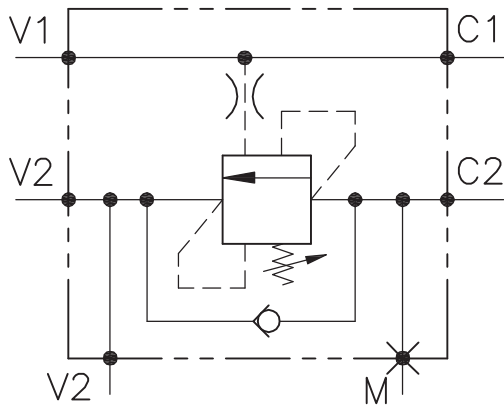


WBN-SE-F28-...



CARATTERISTICHE

Luce nominale	DN 6/8
Portata min/max	1/60 l/min - 0.26/15.9 GPM
Pressione max. di picco	450 bar - 6525 PSI
Pressione max. di taratura	350 bar - 5075 PSI
Rapporto di pilotaggio standard	Vedi tab. / See tab.
Temperatura ambiente	-30°C + 50°C
Temperatura olio	-30°C + 80°C
Filtraggio consigliato	30 micron

PERFORMANCE

Rated size
Min/max flow-rate
Max peak pressure
Max setting pressure
Standard pilot ratio
Room temperature
Oil temperature
Recommended filtration

NOTE:

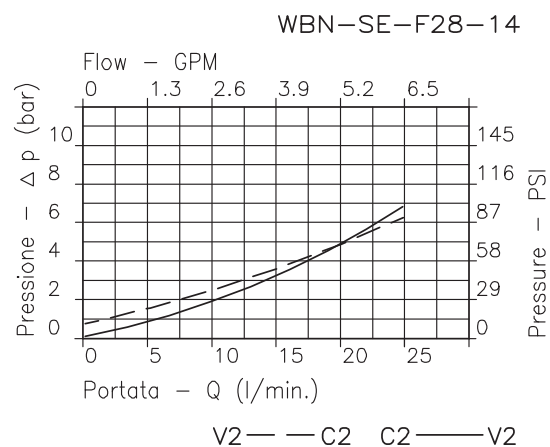
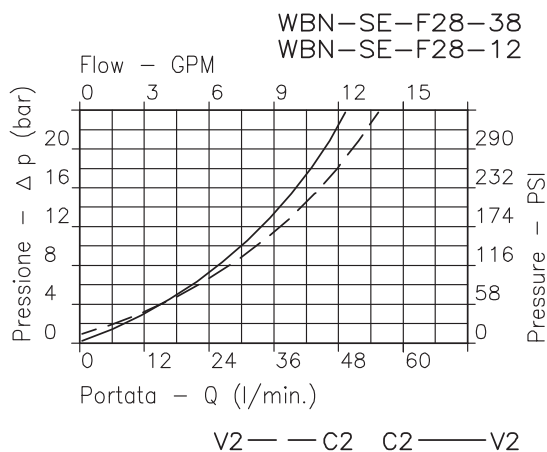
La taratura deve essere 1.3 volte maggiore della pressione indotta dal carico. Valve should be set at 1.3 times load induced pressure.

ESEMPIO/EXAMPLE:

Pressione di lavoro max

350 bar / 1.3 = 270 bar

Max working pressure



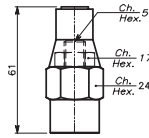
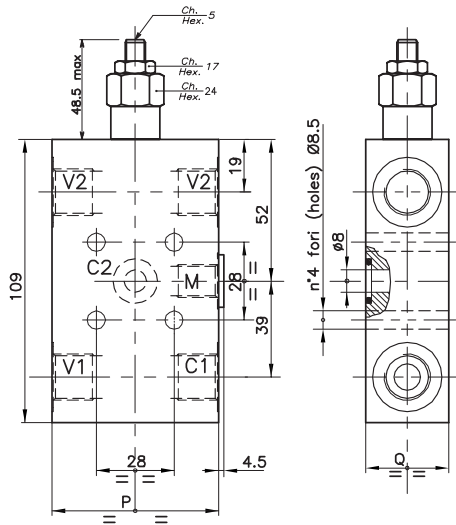
Viscosità olio 46 cSt a 50°C - Oil viscosity 46 cSt at 50°C

VALVOLA BILANCIAMENTO, BLOCCO E CONTROLLO MOVIMENTO A SEMPLICE EFFETTO CON COLLETTORE FLANGIATO SINGLE COUNTERBALANCE VALVE WITH FLANGEABLE BODY

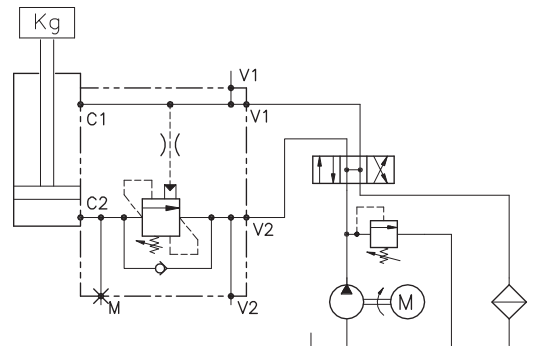
REGOLAZIONE
ADJUSTMENT →

Grano
Dowel
(X)

Piombata
Sealed
(K)



ESEMPIO TIPICO DI CIRCUITO TYPICAL CIRCUIT EXAMPLE



DIMENSIONI DIMENSIONS

Campo taratura Setting range	P	Q	Attacchi Port size M GAS (BSPP)	Attacchi Port size V1-2-C GAS (BSPP)	Luce nominale Rated size DN	Portata max Max flow-rate l/min - GPM
605	55	29	1/4"	3/8"	8	40-10
606	65	34.5	1/4"	1/2"	10	60-15

CODICE DI ORDINAZIONE HOW TO ORDER

N01 . 605 . 0 X 0 . A

Campo taratura / Setting range

605

606

Campo taratura 60÷350 bar (molla colore giallo)
Setting range 60÷350 bar (yellow spring)

Taratura standard (Q=5 l/1')
Std. bar setting Q=5 l/1')

250 bar

Incr. press. - bar giro/vite
Pressure rise - turn of screw
(90)

Rapporto
di pilotaggio
Pilot ratios

O 4.25: 1

D 8: 1

Regolazione
Adjustment

X Grano - Dowel

K Piombata - Sealed

Collettore
Body

A Acciaio
zincato
Zinc plated
steel