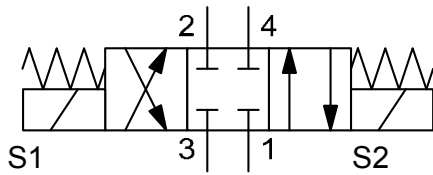


SYMBOL



4/3 Solenoid Directional Valve

Spool type, direct acting

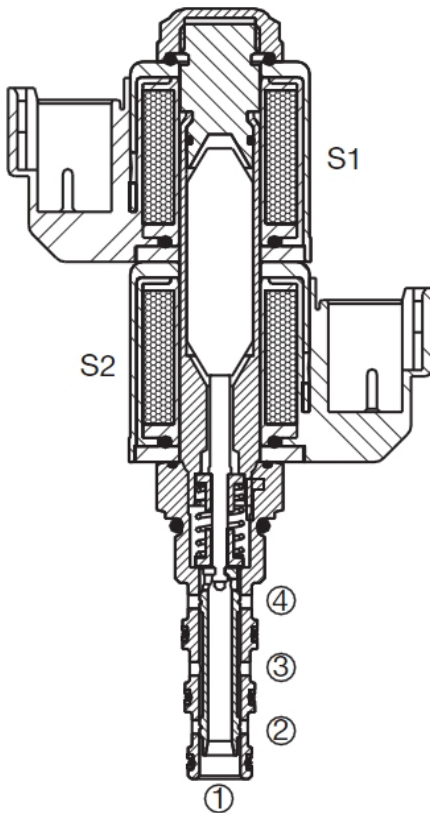
Cartridge-Minivalve – 350 bar

WK06E-01

UNF

up to 11 l/min
up to 350 bar

FUNCTION



In de-energized mode all ports are blocked.

If the coil S1 is energized, there is free flow from port 3 to 4 and from 2 to 1.

If the coil S2 is energized, there is flow from port 3 to 2 and from 4 to 1.

FEATURES

- All exposed surfaces corrosion-proof
- All valve parts made of high-strength steel with hardened and ground components to ensure minimal wear and extended service life
- Coil seals protect the solenoid system
- Coils easy to exchange and pivotable

SPECIFICATIONS

Operating pressure:	max. 350 bar max. 210 bar at Tank (port 1)
Nominal flow:	max. 11 l/min
Leakage:	< max. 100 cm ³ /min at 207 bar and 28 mm ² /s
Temperature range of operating fluid:	Min. – 30°C up to max. +100° C
Ambient temperature range:	Min. – 30°C up to max. + 60° C
Fluid:	Hydraulic fluid to DIN 51524 T1 + T2
Viscosity range:	min. 7,4 mm ² /s up to max. 420 mm ² /s
Filtration:	Class 21 / 19 /16 according to ISO 4406 or cleaner
MTTF _d :	150 years
Installation:	no orientation restrictions
Materials:	Valve body: steel with hardened work surfaces Piston: hardened and ground steel Seals: NBR (Standard) FKM (optional, temperature range -20°C up to +120°C)
Cavity:	Back-up rings: TPE-E
Weight:	FC06-4 Complete valve: 0,374 kg Coil only: 0,088 kg (2x)
Electrical data	
Type of voltage:	DC coil, AC voltage is rectified by a rectifier built-in the plug
Nominal current at 20°C:	984 mA at 12 V DC 492 mA at 24 V DC
Voltage tolerance:	+/- 15% of Coil voltage
Coil duty rating:	100% continuous up to max. 115% of Coil voltage at 60°C ambient temperature
Switching time:	Energized: approx. 30 - 60 ms De-energized: approx. 20 - 40 ms

