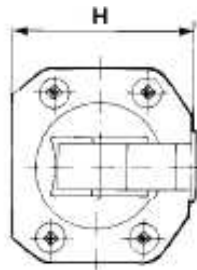
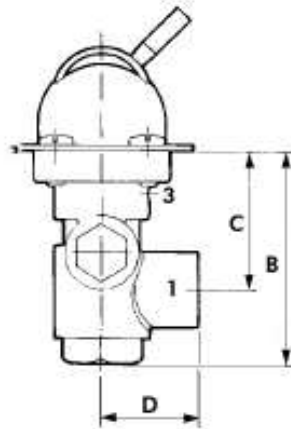
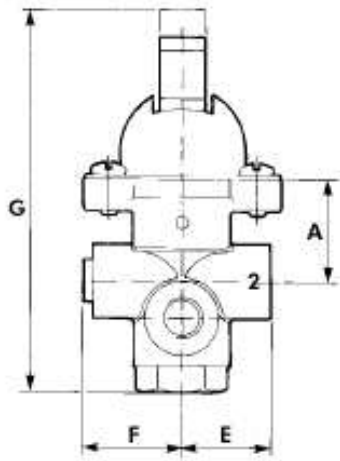


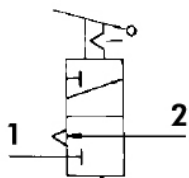


<b>One-way Valve</b>	Ref. AOHCACMC1
Metallic	

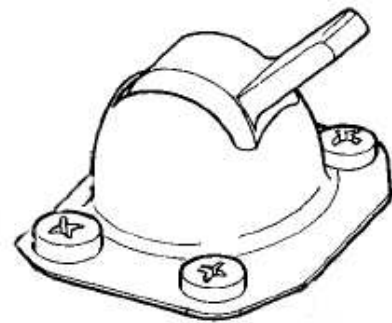
**Main Dimensions**



- A. 27 mm
- B. 57 mm
- C. 36 mm
- D. 26 mm
- E. 24 mm
- F. 26 mm
- G. Max 103 mm
- H. 43,5 mm



- 1 - Supply
- 2 - Delivery
- 3 - Exhaust



(Dimensions in mm)

**Main Data**

<b>Working medium</b>	<b>Air</b>
<b>Operating pressure (Bar)</b>	<b>up to 12</b>
<b>Working temperature</b>	<b>- 40°C / + 80 °C</b>
<b>Nominal diameter (mm)</b>	<b>3</b>
<b>Thread Ports</b>	<b>G1/8"</b>
<b>Weight (Kg)</b>	<b>0,165</b>

CTI AOHCACMC1 0901-2

ABER is constantly engaged in improving its products and, therefore, reserves itself the right to modify without any further notice the characteristics shown



**ABER - Embraiaçens e Comandos Hidráulicos - A. B. LDA**  
 Rua Francisco de Almeida, Nº 30 – Vila Nova da Telha – 4470 MAIA - Portugal  
 Telephone: +351.22.9438070 Fax: +351.22.9420823 e-mail: [aber@aber.pt](mailto:aber@aber.pt) <http://www.aber.pt>