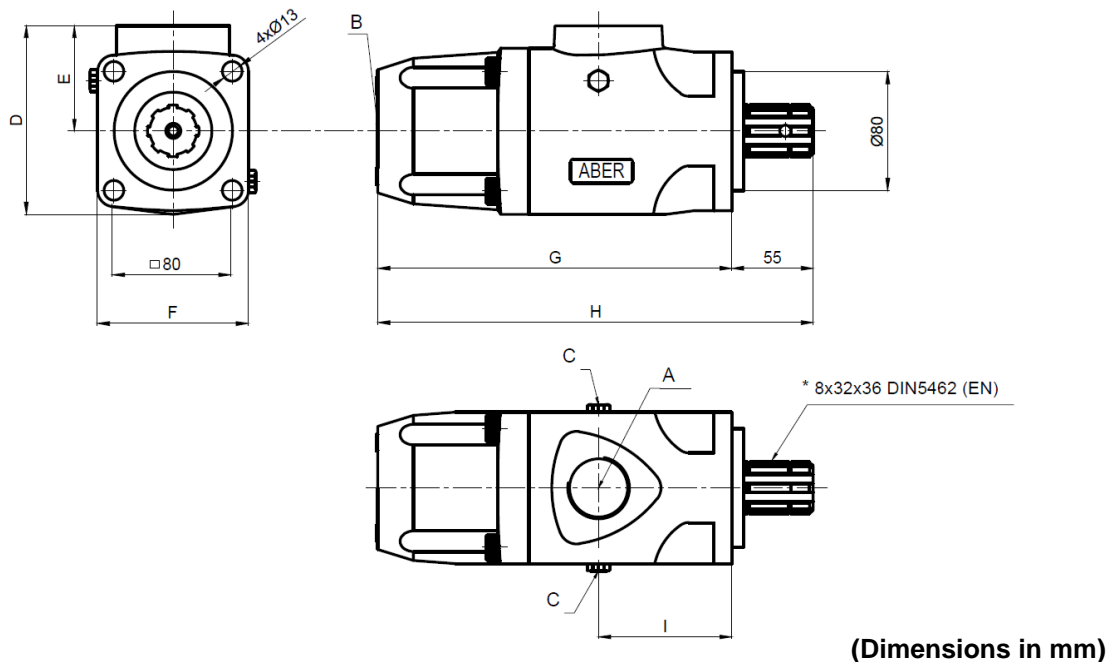




OIL-HYDRAULIC PUMP AXIAL PISTONS

Ref. BHZ_EN

Main Dimensions



Main Data

Pumps BHZ_EN	25319	25419	25519	25619	25716	25719	25916
Cylinder capacity (cm ³ /Rot.)	32	40	50	60	70	80	110
Output at max. rotation (l/min)	48	60	75	90	105	96	132
Operating pressure (bar) (up to)	250	250	250	250	250	250	250
Peak pressure (bar)	320	320	320	320	320	320	320
Rotation mín. (rpm)	200	200	200	200	200	200	200
Rotation máx. (rpm)	1500	1500	1500	1500	1500	1200	1200
Weight (kg)	12	12	13	13	16	16	21,5
Sense of Rotation	Bi-directional						
A-Oil inlet (BSP)	1"1/4	1"1/4	1"1/4	1"1/4	1"1/2	1"1/2	1"1/2
B-Oil Outlet (BSP)	3/4"	3/4"	3/4"	3/4"	1"	1"	1"
C	Oil drain plug						
D	125	125	125	125	148	148	152
E	69	69	69	69	72	72	80
F	102	102	102	102	118	118	142
G	240	240	240	240	259	259	270
H	295	295	295	295	314	314	325
I	90	90	90	90	118	118	134

How to order:

Example: Pump 32cm³, operating pressure up to 250 bar; peak pressure 320 bar, ref. BHZ with DIN 5462 (EN) → BHZ25319EN

ABER is constantly engaged in improving its products and, therefore, reserves itself the right to modify without any further notice the characteristics shown



ABER - Embraagens e Comandos Hidráulicos - A. B. LDA

Rua Francisco de Almeida, Nº 30 – Vila Nova da Telha – 4470 MAIA - Portugal

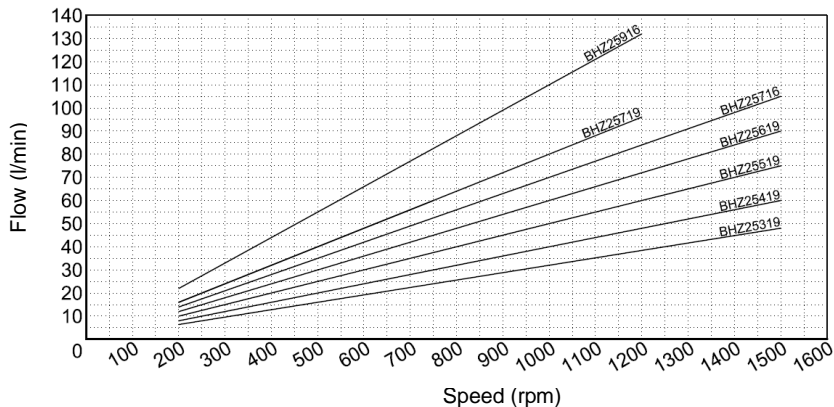
Telephone: +351.22.9438070 Fax: +351.22.9420823 e-mail: aber@aber.pt <http://www.aber.pt>



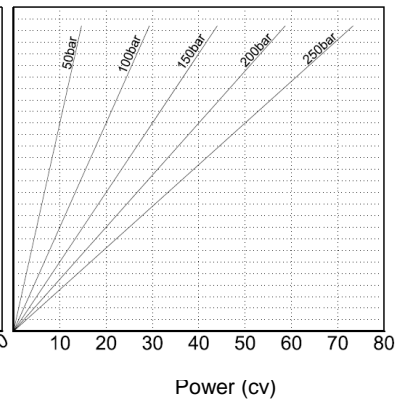
OIL-HYDRAULIC PUMP AXIAL PISTONS

Ref. BHZ_EN

**Diagram
Flow - Speed**



**Diagram
Input Power - Flow – Pressure**



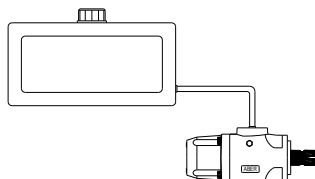
Hose dimensions

Inlet Hose	
Flow (l/min)	Internal pipe diameter (inch)
30-40	1"1/4
50-60	1"1/2
70-90	1"3/4
100-120	2"
130-150	2"1/4

Outlet Hose				
Flow (l/min)	Internal pipe diameter (inch)			
	30	1/2"	1/2"	1/2"
40	5/8"	1/2"	1/2"	1/2"
50	5/8"	5/8"	5/8"	1/2"
60	3/4"	5/8"	5/8"	5/8"
70	1"	3/4"	3/4"	5/8"
80	1"	3/4"	3/4"	3/4"
90	1"	1"	1"	3/4"
100	1"	1"	1"	1"
110	1"	1"	1"	1"
120	1"	1"	1"	1"
130	1"	1"	1"	1"
	50-100	100-150	150-200	200-300
	P (bar)			

IMPORTANT NOTES:

- ✓ Other axis available, please consult "Axel options"
- ✓ Diameter of inlet pipes lower than indicated in our technical catalogues as well as a poor sealing can cause cavitation phenomenon to occur, thereby deteriorating the pump
- ✓ Keep up the deposit above pump level
- ✓ Used always return filters. We recommend filters with mesh equal to or lower than 25 µm
- ✓ The connection of inlet pipes in the pump, can be done by threading or flange and the sealing by orring
- ✓ Use a good quality mineral hydraulic-oil with viscosity at operating temperature between 20 and 46 cSt
- ✓ Fill the oil tank to 85% of its maximum capacity (the remainder 15% must not have oil)



Keep up the deposit above pump level

CTI BHZ_EN 1306- 4

ABER is constantly engaged in improving its products and, therefore, reserves itself the right to modify without any further notice the characteristics shown



ABER - Embraigens e Comandos Hidráulicos - A. B. LDA
 Rua Francisco de Almeida, Nº 30 – Vila Nova da Telha – 4470 MAIA - Portugal
 Telephone: +351.22.9438070 Fax: +351.22.9420823 e-mail: aber@aber.pt <http://www.aber.pt>