



Hydraulic Pilot Controls HPVS Series

Introduction

The product, with its single lever dual axis control, and supported by an extensive range of control curve characteristics and handle options, makes it suitable for a wide range of both mobile and industrial applications.

Our engineers can offer specialist support to optimise this product to suit your application.

The product is supported by a comprehensive Sales and Service facility around the world.

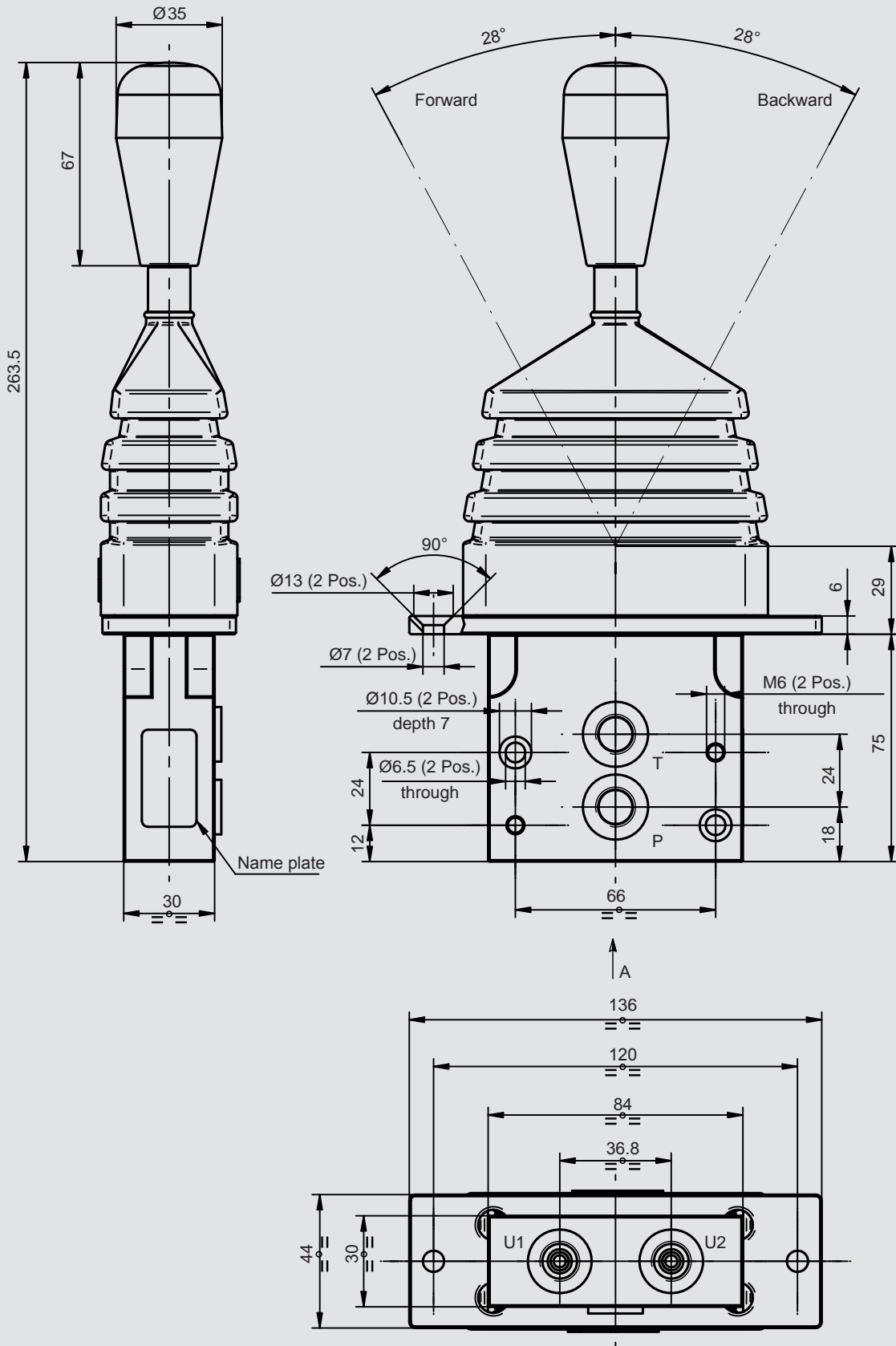
Benefits

- Compact and light weight
- Suitable for arm rest of console mounting
- Compatible with a wide range of product
- Stylish good looks suitable for modern cabs
- Operator is insulated from high temperature components
- Proven, simple pressure reducing elements
- Wide range of low hysteresis, high accuracy, pressure control curves
- Wide range of electrical options in both standard and multi-functional ergonomic handles
- Low effort lever control

Technical data

Port options:	P, T, U1, U2, U3, U4; 1/4" BSP or 7/16"-20 UNF SAE #4
Max. inlet pressure at port P:	50 bar
Max. back pressure at port T:	3 bar
Inlet flow range:	5 up to 20 l/min
Max. hysteresis:	+/-0.5 bar
Fluid:	Hydraulic Mineral Oils ISO, HM and HV
Contamination class:	21/16/13 ISO 4406/1999
Fluid temperature range:	from -20 °C up to +80 °C

Dimensions



Model Code

HPVP XX X XX F X X XX

HPVS = sectional hydraulic
compact pilot valve series S

Basic model number

- 01** = lever spring returned to neutral
- 02** = lever detented in any position
- 03** = lever detented in any position with neutral sensor
- 04** = lever detented at both stroke ends
- 05** = lever detented in neutral position
- 06** = lever detented in neutral and friction hold in any position
- 07** = lever detented to U1 and spring return to neutral from U2
- 08** = lever detented to U2 and spring return to neutral from U1

Handle type

W = Without Handle

Metering curve

F = Standard Control Plunger

Return spring

- 0** = 1.4 to 2.8 daN (Standard)
- 1** = 3.0 to 4.5 daN

Port Size & Type

- S** = Omit for 1/4" BSP
- S** = 7/16"-20 UNF SAE #4

Micro Switch options

- M1** = 1 switch senses out of center position
- M2** = 2 switches sense movement away from neutral each way
- M3** = 1 switch senses forward movement away from neutral
- M4** = 1 switch senses backward movement away from neutral

Note

The information in this brochure relates to the operating conditions and applications described.

For applications or operating conditions not described, please contact the relevant technical department.

Subject to technical modifications.



Nordhydraulic

HYDAC INTERNATIONAL

Head Office
HYDAC INTERNATIONAL
GMBH

Industriegebiet
66380 Sulzbach/Saar
Germany

Phone: +49 6897 509-01
Fax: +49 6897 509-577

E-mail: mobilevalves@hydac.com
Internet: www.hydac.com