



Cable Control WKA 20

Key valve features

Cable control WKA 20 is a dual axis (joystick) control unit. Short spool travel gives a high ratio to the control lever stroke, even at moderate lever length, in combination with low forces transmitted by the cable, all the requirements of low lever forces are met.

Add to this a well designed cable with low friction and high efficiency and you will find that the cable control can be used for even the most demanding application.

Technical data

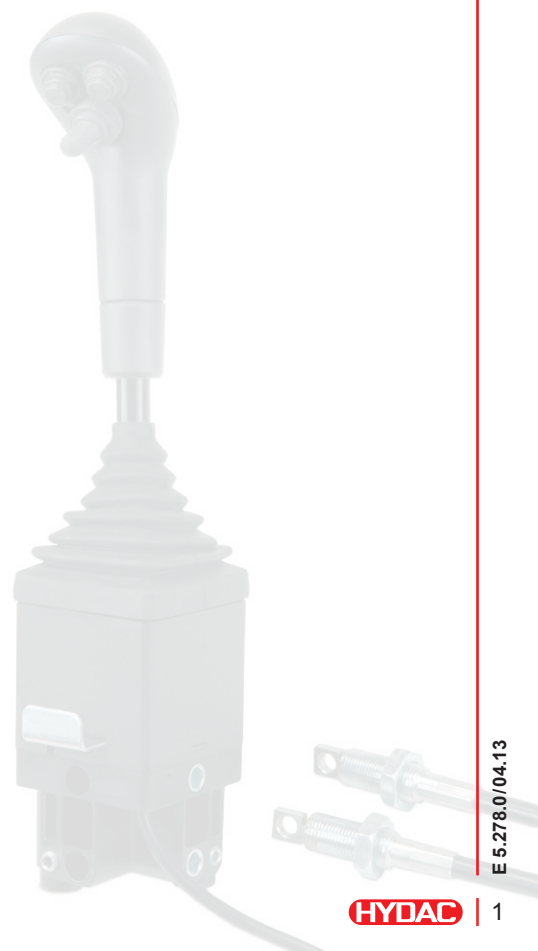
Lever stroke:	200 mm, 46°
Max force in handle, locked position:	175 N
Lever ratio:	9:1
Cable stroke:	±16mm
Rated current, push button:	2 A @ 12 or 24 V DC
Rated current, toggle switch:	2 A @ 12 or 24 V DC
Cable type:	4 x 0.5 mm ²
Cable length:	2,000 mm

Further data

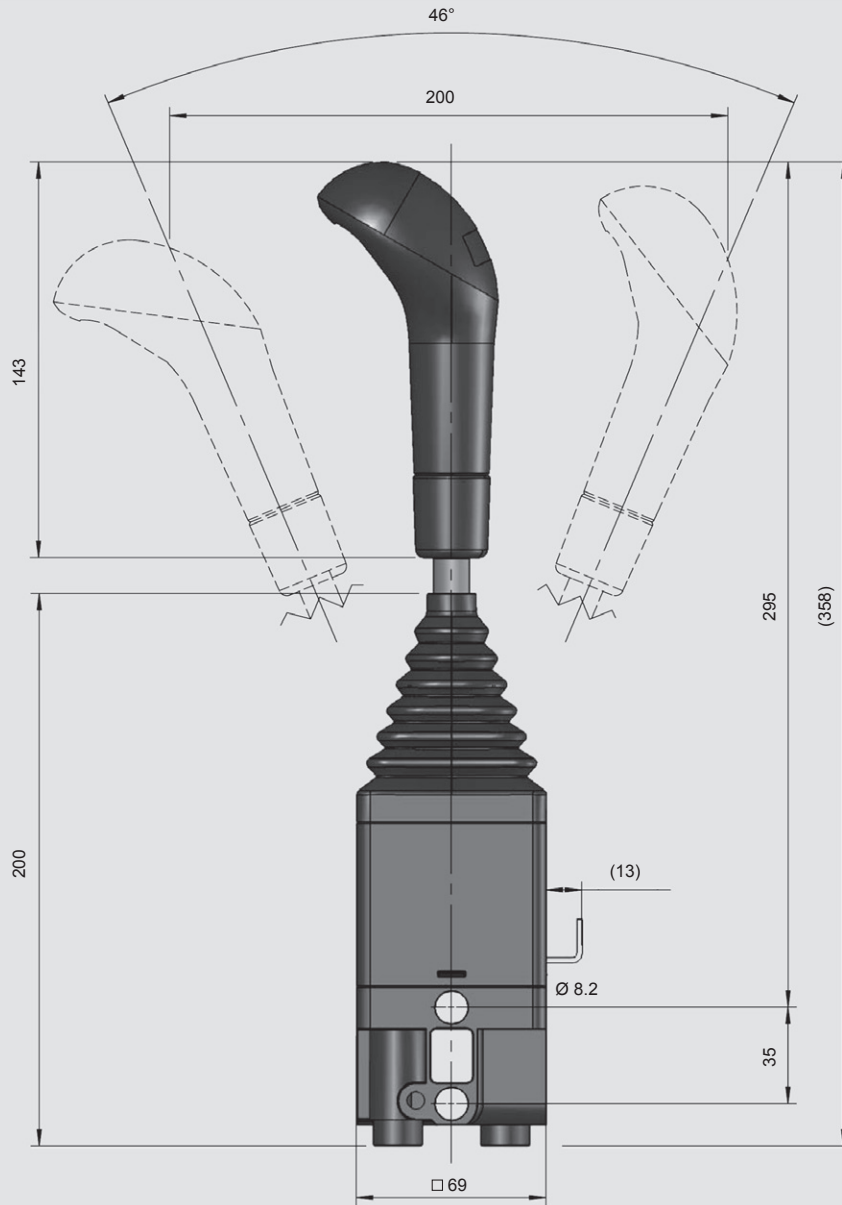
Lock in neutral position, possible to mount on each of the four sides of the body. Changeable movement of cables. Mounting holes on all four sides of the body.

Options

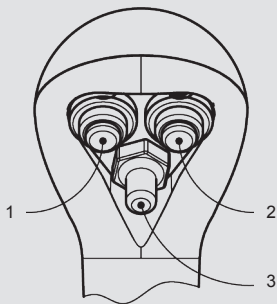
Handle with 2 push buttons and one toggle switch (WKA21).



Dimensions and Weight

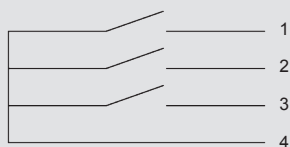


Weight 0.9 kg



Cable	Color el. wire	Push-button/toggle-switch	Function*
1	Black	Button	3rd function
2	Grey	Button	4th function
3	Brown	Toggle switch	Loader suspension
4	Yellow		+12 V (24 V)

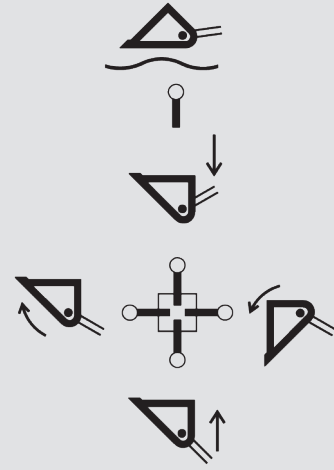
* Example of use



Handle with symbols for front end loader

Symbols for front end loader according to SS-EN 12525:2000 +A2:2010.

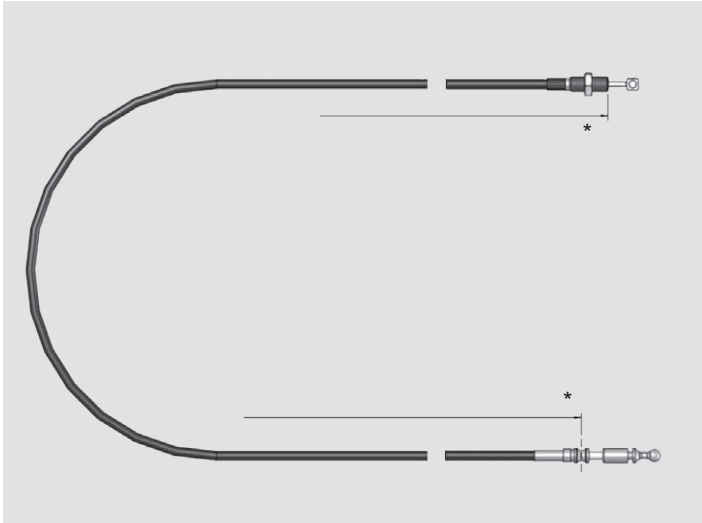
WKA22 with symbol, without push-buttons and
WKA23 with symbol, with two electrical push-buttons and a toggleswitch.



The knob is available with above symbol.

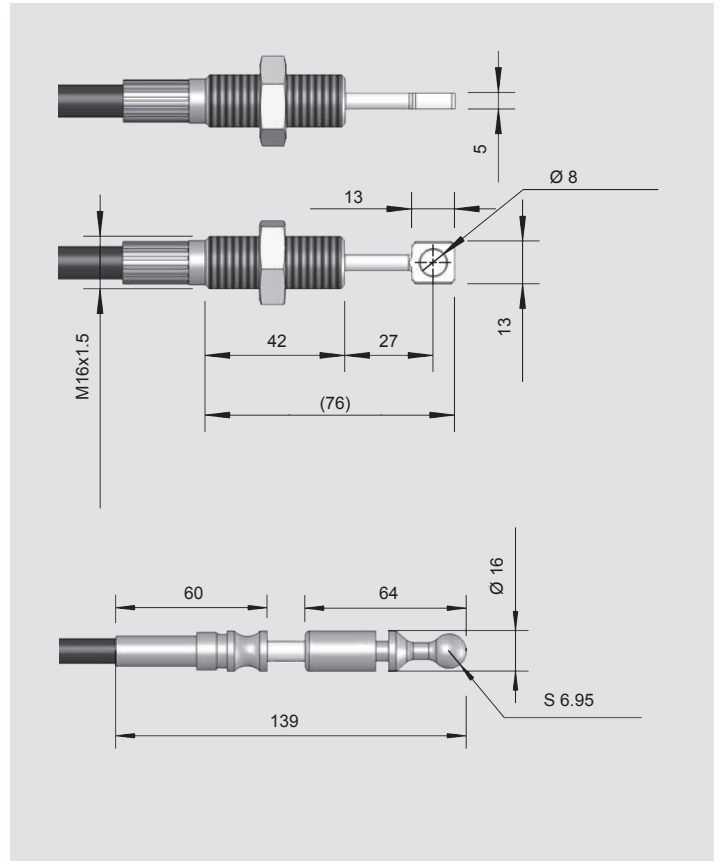
Cable WAL

Cable WALX, X = length * in mm



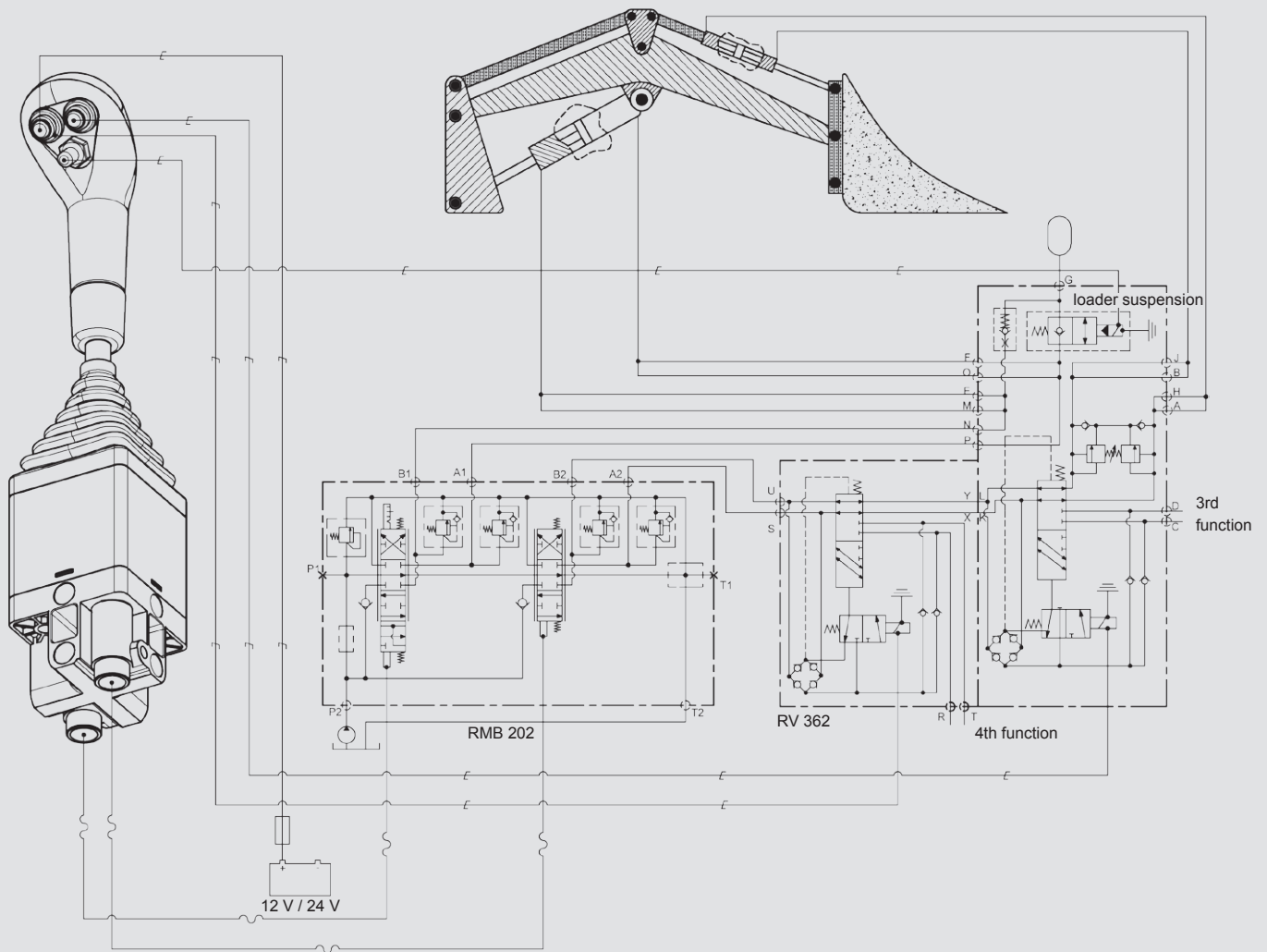
Max load in cable:	800 N
Max bending radius	150 mm
Outer diameter cable	9.5 mm

Standard cables	Length
WAL1200	1,200 mm
WAL1600	1,600 mm
WAL2000	2,000 mm
WAL2400	2,400 mm
WAL2800	2,800 mm



Make sure the cable has as few bends as possible when installed. Bending radius must not be less than 150 mm.

Typical installation of front end loader



Note

The information in this brochure relates to the operating conditions and applications described.

For applications or operating conditions not described, please contact the relevant technical department.

Subject to technical modifications.



Nordhydraulic
HYDAC INTERNATIONAL

Head Office
HYDAC INTERNATIONAL
GMBH

Industriegebiet
66380 Sulzbach/Saar
Germany

Phone: +49 6897 509-01
Fax: +49 6897 509-577

E-mail: mobilevalves@hydac.com
Internet: www.hydac.com