



Mobile Oil Transport and Filtration Unit

TW 5

Description

The oil transport and filtration trolley TW 5 is a mobile oil service unit which is designed to transport oil. It also filters hydraulic and lubrication oil when filling systems and when transferring oils. The unit has a 200 l built-in tank.

A change-over valve on the unit allows the operator to bypass the filter when emptying the tank (optional).

Applications

- Hydraulic and lubrication oil systems in a variety of industries

Advantages

- Easy, safe oil transport
- Convenient offline filtration
- Easy to operate
- Greater system availability
- Reduction in Life Cycle Cost LCC

Technical specifications

Tank size	200 l
Pump type	Vane pump
Max. flow rate	30/40 l/min
Operating pressure	4.5 bar max.
Permitted suction pressure at suction port	-0.4 bar ... +0.6 bar
Viscosity range	15 ... 800 mm ² /s (version-dependent, see Model Code)
Permitted operating fluid	Mineral oil (others on request)
Fluid temperature	-10 ... 80 °C
Ambient temperature	-20 ... 40 °C
Seals, gaskets	NBR (Option FPM)
Protection class	IP 54
Power cable, length	10 m
Hoses, length	3 m
Hose connections	Suction hose NW 28 Pressure hose NW 25
Weight (empty)	≈ 160 kg
Accessories	Pistol grip filling nozzle Flow meter

Model code

Basic type

TW 5 = Oil transport and filtration trolley

Versions

L = without change-over valve
F = with change-over valve

Type code

10 = standard
Special models on request

Seals

P = NBR (Perbunan)
V = FPM (Viton)

Motor-pump unit

Code	Approx. flow rate at 1450 rpm	Max. viscosity	Electric motor output at 50 Hz
3	30 l/min	250 mm ² /s	0.75 kW
6	40 l/min	800 mm ² /s	1.5 kW

Electric motor voltage

M = 1 x 230 V - 50 Hz
N = 3 x 380-420 V - 50 Hz; 3 x 440-480 V - 60 Hz
S = 3 x 500-600 V - 50 (60) Hz
X = special voltage

Filter size

1 = Element 330
2 = Element 1300

Filter material

B = Betamicron (BN3HC)
A = Aquamicron (BN/AM), (AM)

Filtration rating

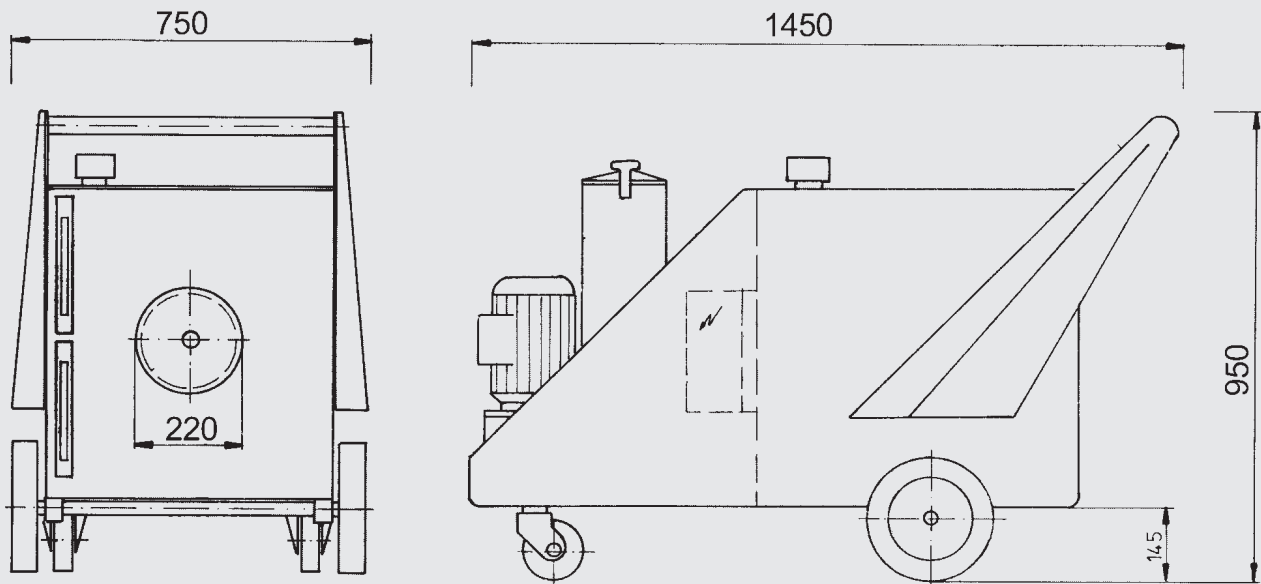
03 = 3 µm BN3HC; BN/AM
05 = 5 µm BN3HC
10 = 10 µm BN3HC; BN/AM
20 = 20 µm BN3HC
40 = 40 µm AM

Clogging indicator

E = Standard, pressure gauge
B = Option: differential pressure gauge - visual
C = Option: differential pressure gauge - electrical
B and C not for version "L"

TW5 L 10 P 6 N 2 B 05 E

Dimensions

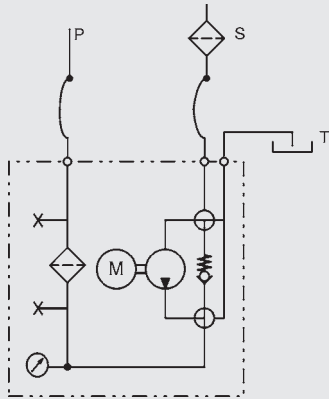


Hydraulic circuit diagram

Version F

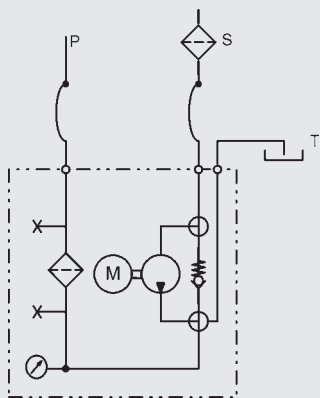
T → P
via filter

Transfer of filtered fluid from the TW5 tank to an external system



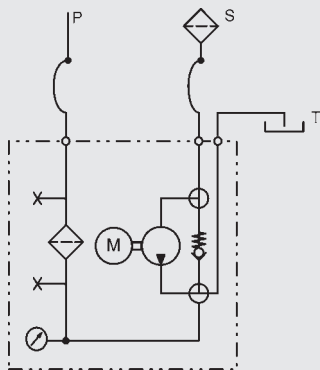
S → P
via filter

Transfer with filtration



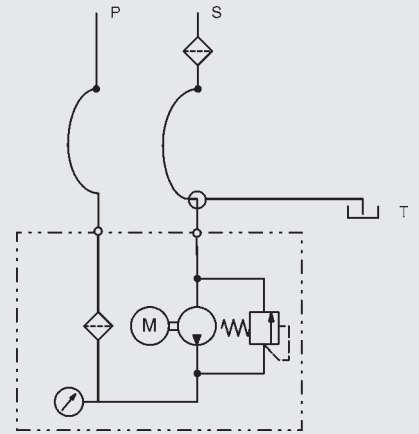
S → T
without filtration

Transfer to the TW5 tank from an external system

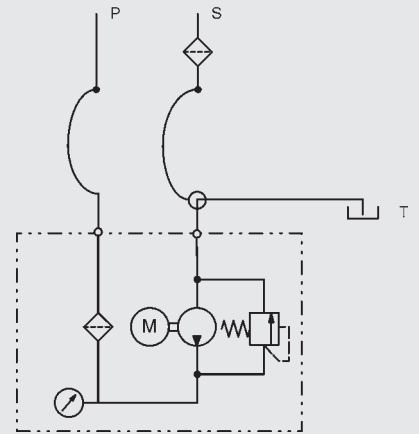


Type L

S → P
via filter



T → P
via filter



Replacement elements

Filter size	Filtration rating	Element type	Part No.
1	3 µm	0330 R 003 BN4HC/-KB (-V-KB)	1262999 (1263640)
1	5 µm	0330 R 005 BN4HC/-KB (-V-KB)	1263000 (1263641)
1	10 µm	0330 R 010 BN4HC/-KB (-V-KB)	1263001 (1263642)
1	20 µm	0330 R 020 BN4HC/-KB (-V-KB)	1263002 (1263643)
1	40 µm	0330 R 040 AM /-KB (-V-KB)	1272067 (1266563)
1	3 µm	0330 R 003 BN/AM /-KB (-V-KB)	1272069 (1276690)
1	10 µm	0330 R 010 BN/AM /-KB (-V-KB)	1272068 (1281126)
2	3 µm	1300 R 003 BN4HC-/KB (-V-KB)	1263059 (1263760)
2	5 µm	1300 R 005 BN4HC-/KB (-V-KB)	1263060 (1263761)
2	10 µm	1300 R 010 BN4HC-/KB (-V-KB)	1263061 (1263762)
2	20 µm	1300 R 020 BN4HC-/KB (-V-KB)	1263062 (1263763)
2	3 µm	1300 R 003 BN/AM /-KB (-V-KB)	1267991 (1271839)
2	10 µm	1300 R 010 BN4AM /-KB (-V-KB)	1270010 (1276060)
2	40 µm	1300 R 040 AM /-KB	1267699

Note

The information in this brochure relates to the operating conditions and applications described.

For applications and operating conditions not described, please contact the relevant technical department.

Subject to technical modifications.

HYDAC FILTER SYSTEMS GMBH

Industriegebiet

D-66280 Sulzbach / Saar

Tel.: +49 (0) 6897/509-01

Fax: +49 (0) 6897/509-846

Internet: www.hydac.com

E-Mail: filtersystems@hydac.com