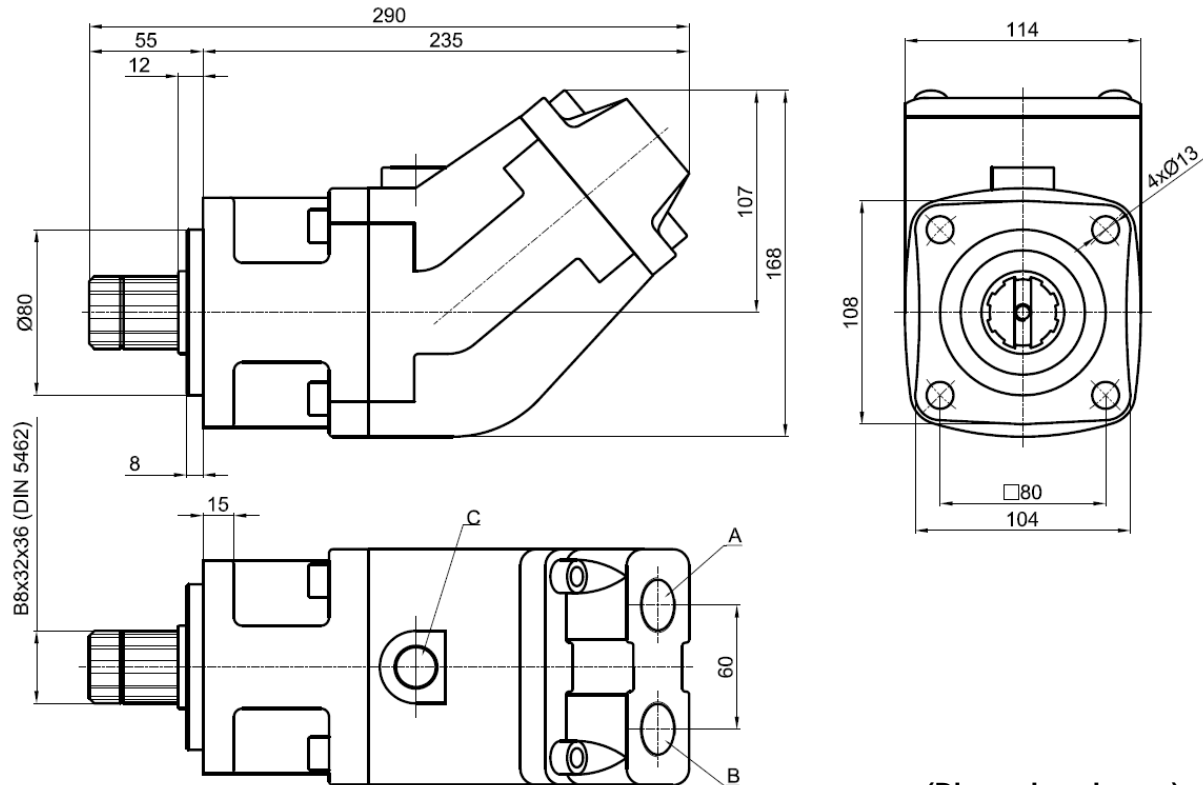




OIL-HYDRAULIC BENT MOTOR AXIAL PISTONS

Ref.
MBI M7

Main Dimensions



(Dimensions in mm)

Main Data

Motors MBI	60M7	80M7
Cylinder capacity (cm ³ /rot.)	60	81
Rotation (rpm)	3000	2750
max. intermittent	2400	2200
max. continuous		
Pressure (bar)	400	350
max. intermittent	350	300
max. continuous		
Max torque – theoretical value (Nm)	380	450
Weight (kg)	10.5	10.5
Pistons quantity	7	7
A-Oil port (mm)	3/4" BSP	1" BSP
B-Oil port (mm)	3/4" BSP	1" BSP
C-Drain hole	M22x1.5	M22x1.5

How to order:

Example: Motor 60cm³/rot.; pressures 400/350 bar; rotation 3000/2400; ref. MBI M7 → MBI60M7

Important notes:

-To install one of these motors, please consult and respect the instruction "BI motors recommendations before start-up".

ABER is constantly engaged in improving its products and, therefore, reserves itself the right to modify without any further notice the characteristics shown



ABER - Embraagens e Comandos Hidráulicos - A. B. LDA

Rua Francisco de Almeida, Nº 30 – Vila Nova da Telha – 4470 MAIA - Portugal

Telephone: +351.22.9438070 Fax: +351.22.9420823 e-mail: aber@aber.pt <http://www.aber.pt>