



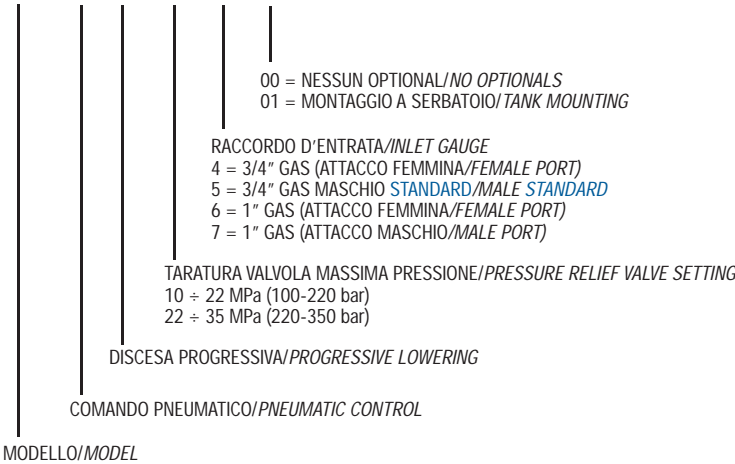
DM 150

Distributore Idrraulico Hydraulic Distributor

CODICE DI ORDINAZIONE / ORDERING CODE

D150 P P 10 5 00

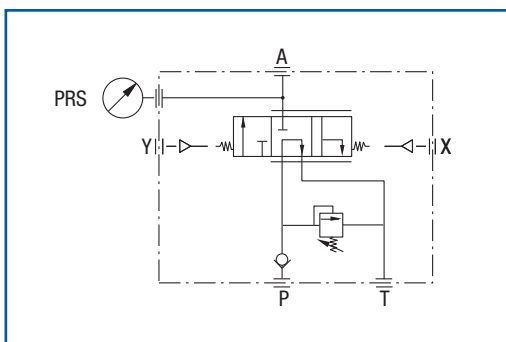
DM 150 P



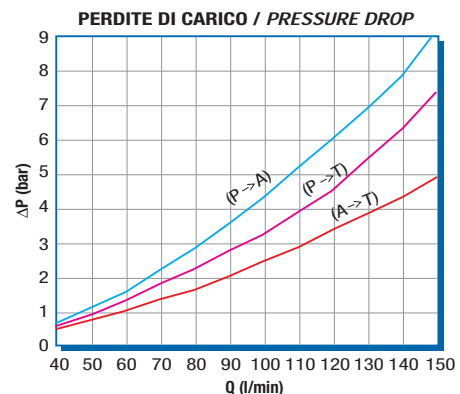
CARATTERISTICHE TECNICHE / TECHNICAL SPECIFICATIONS			
Portata nominale Flow rate	150 l/min	Temperatura fluido °C (t) Fluid temperature °C (t)	-25° + 80°C
Pressione massima di lavoro Max working pressure	250 bar	Campo viscosità Viscosity range	12-100 cSt
Pressione massima di picco (<0.1 s) Max peak pressure	300 bar	Filtrazione/Filtering ISO 4406 βx=75	20/17 25 □m
Pressione massima sul T T port max pressure	30 bar	Peso Weight	5.8 kg
Pressione pneumatica massima Max pneumatic pressure	12 bar	Fluido olio minerale Mineral oil	ISO VG 46

- > Distributore da 150 l/min a comando **pneumatico**, per veicoli ribaltabili con **sola motrice**.
- > Consente la **salita**, la **discesa veloce** e la **discesa progressiva** con comando pneumatico proporzionale.
- > Sono incorporate la **valvola di ritegno** in ingresso e la **valvola di massima pressione** regolabile a richiesta 140-250 bar.
- > Flangiabile a telaio.
- > Attacco manometro o pressostato.

- > **Pneumatic operated 150 l/min distributor**, for tippers **without trailer**.
- > It performs **tipping, fast lowering or progressive lowering** by means of **progressive pneumatic control**.
- > It includes inlet **check valve** and adjustable **relief valve**. The **relief valve range** is from 140 to 250 bar.
- > Flange connection to **chassis**.
- > Upon **manometer or pressure switch gauge**.



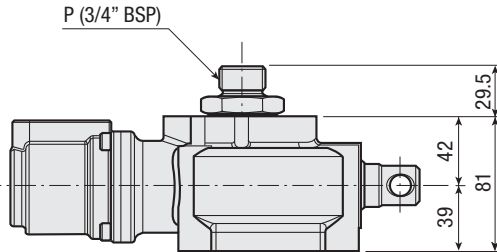
mod. DM 150 P



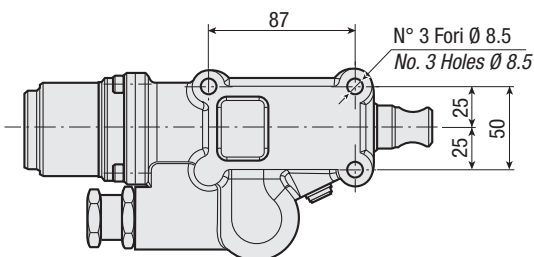
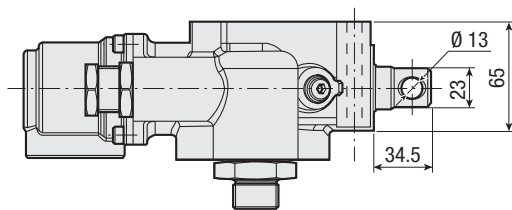
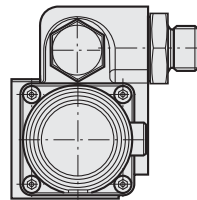
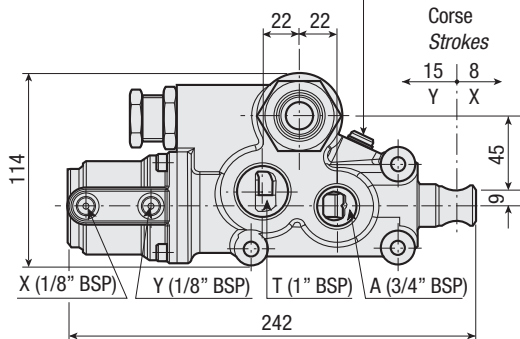
RILIEVI ESEGUITI CON OLIO ISO VG 46 A 50° C (ν = 30 cSt)
THE ABOVE SPECIFICATIONS REFER TO OIL TYPE ISO VG 46 AT 50° C (ν = 30 cSt)

VERSIONE STANDARD
STANDARD VERSION

mod. DM 150 P



Foro 1/8" G per pressostato o manometro
Holes 1/8" G for press. switch or manometer



Pressostato con guarnizione
Coppia di serraggio: 30 ± 5 Nm
Pressure switch with washer
Tightening torque: 30 ± 5 Nm

**PRESSOSTATO A RICHIESTA
UPON REQUEST PRESSURE SWITCH**

Pressostato con intervento 3 bar consigliato per pressioni di lavoro Pressure switch set at 3 bar advised for working pressure	< 150 bar
Pressostato con intervento 7 bar consigliato per pressioni di lavoro Pressure switch set at 7 bar advised for working pressure	> 150 bar

KIT GUARNIZIONI / SEALS KIT

CODICE / CODE

39200028000

KIT FISSAGGIO A TELAIO / CHASSIS MOUNTING KIT

CODICE / CODE

30KFD004000

Montare le viti con loctite frenafilletti 243 e serrare a coppia $20 \text{ Nm} \cdot 2 \text{ Nm}$
Assembly screws using Loctite 243 and tighten with torque $20 \text{ Nm} \cdot 2 \text{ Nm}$