



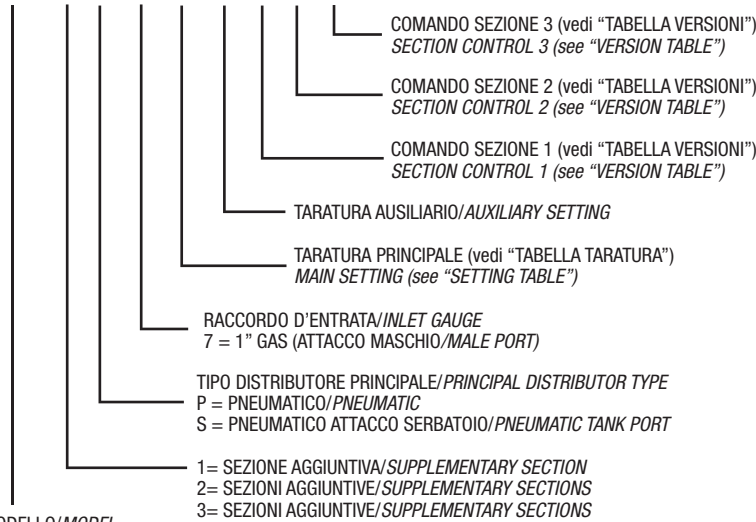
DM 151

Distributore Idraulico Hydraulic Distributor

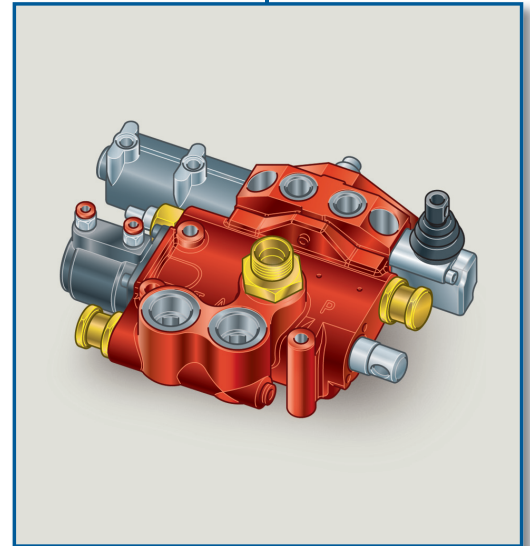
CODICE DI ORDINAZIONE / ORDERING CODE

D15 1 P 7 B C F F F

**DM 151 P
DM 152 P
DM 153 P**

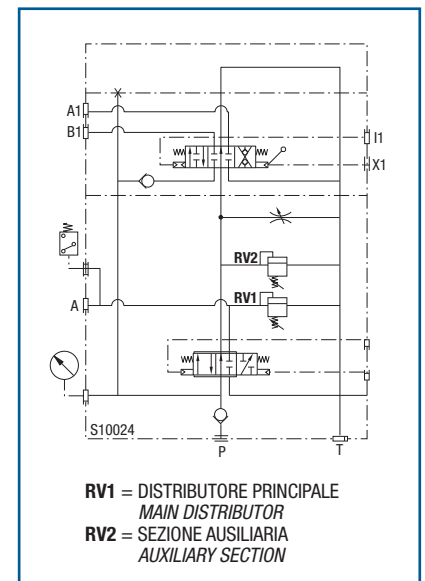


MODELLO/MODEL

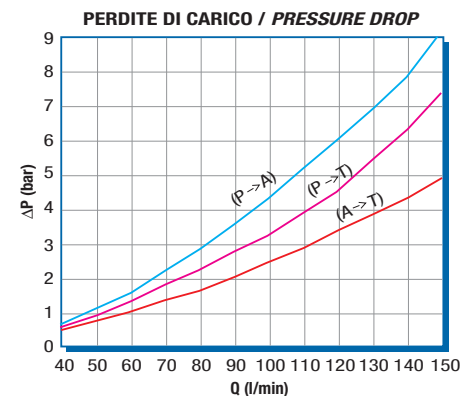


CARATTERISTICHE TECNICHE / TECHNICAL SPECIFICATIONS

Portata nominale Flow rate	Distributore principale Main distributor	150 l/min	Temperatura fluido °C (t) Fluid temperature °C (t)	-25° + 80°C
	Sezione ausiliaria Auxiliary section	60 l/min		
Pressione massima di lavoro Max working pressure		250 bar	Campo viscosità Viscosity range	12-100 cSt
Pressione massima di picco Max peak pressure (<0.1 s)		300 bar	Filtrazione/Filtering ISO 4406 βx=75	20/17 25 μm
Pressione massima sul T T port max pressure		30 bar	Peso Weight	5.8 kg
Pressione pneumatica massima Max pneumatic pressure		12 bar	Fluido olio minerale Mineral oil	ISO VG 46

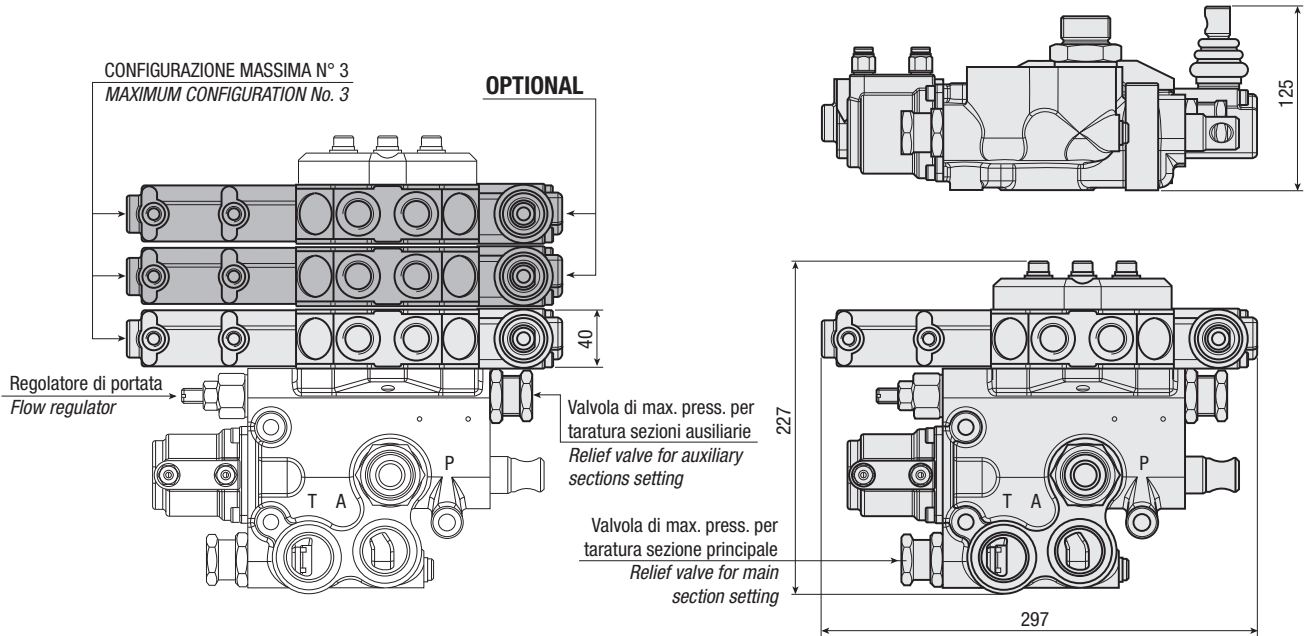


- > Distributore da 150 l/min a comando **pneumatico**, per veicoli ribaltabili con **sola motrice**.
- > Consente la **salita**, la **discesa veloce** e la **discesa progressiva** con comando pneumatico proporzionale.
- > Sono incorporate la **valvola di ritegno** in ingresso e la **valvola di massima pressione** regolabile a richiesta 140-250 bar.
- > **Valvola di massima pressione** per sezioni ausiliarie, regolabile a richiesta 140-250 bar.
- > **Regolatore di portata** per sezioni ausiliarie.
- > **Sezioni ausiliarie** da 1 a 3.
- > **Pneumatic operated 150 l/min distributor, for tippers without trailer.**
- > It performs **tipping, fast lowering or progressive lowering** by means of progressive pneumatic control.
- > It includes inlet **check valve** and adjustable **relief valve**. The **relief valve** range is from 140 to 250 bar.
- > **Relief valve** for auxiliary sections, adjustable 140-250 bar (upon request).
- > **Flow regulator** for auxiliary sections.
- > **Auxiliary sections** from 1 to 3.

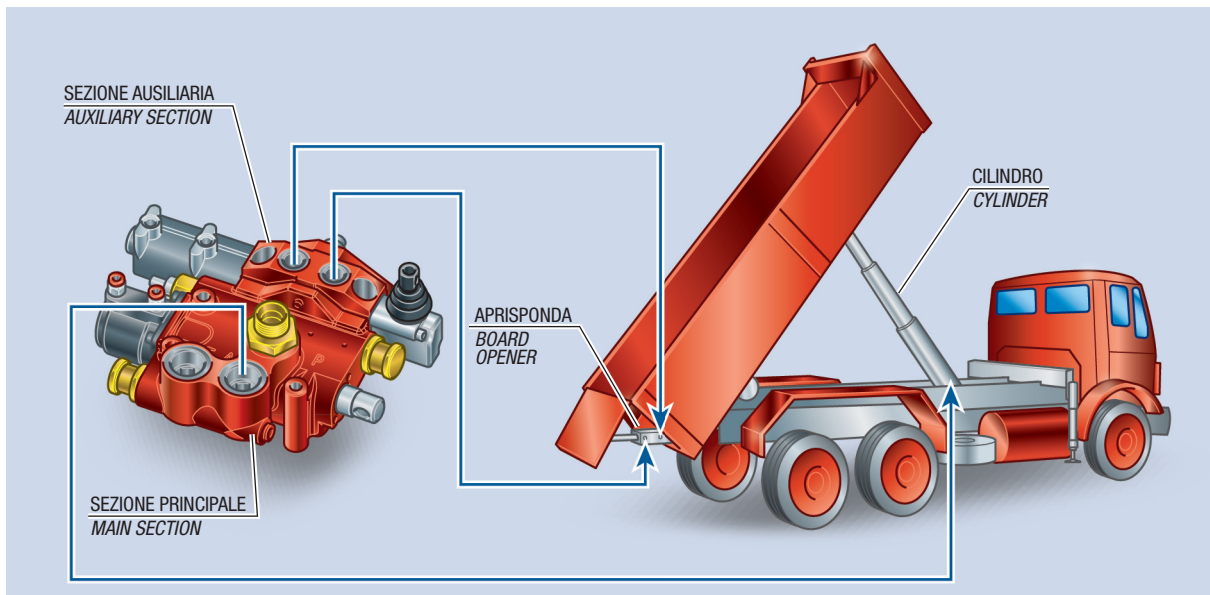


RILIEVI ESEGUITI CON OLIO ISO VG 46 A 50° C (√= 30 cSt)
THE ABOVE SPECIFICATIONS REFER TO OIL TYPE ISO VG 46 AT 50° C (√= 30 cSt)

DIMENSIONI / DIMENSIONS



ESEMPIO DI UTILIZZO / EXAMPLE OF APPLICATION



KIT FISSAGGIO A TELAIO / CHASSIS MOUNTING KIT

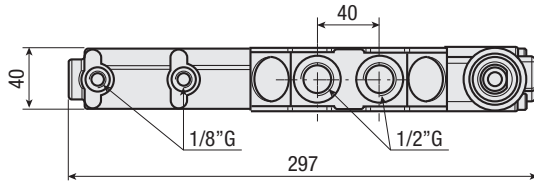
CODICE / CODE

30KFD004000

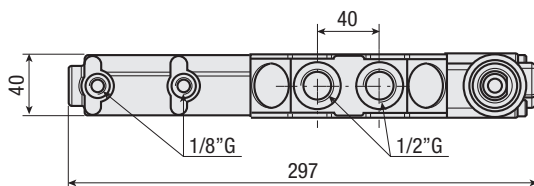
Montare le viti con loctite frenafilietti 243 e serrare a coppia $20 \text{ Nm}^{-0.2}$ Nm
 Assembly screws using Loctite 243 and tighten with torque $20 \text{ Nm}^{-0.2}$ Nm

TABELLA VERSIONI / VERSION TABLE

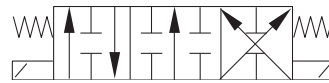
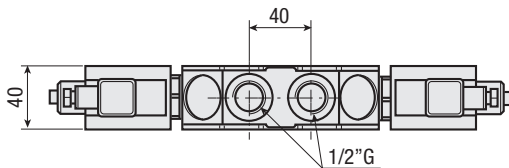
F = PNEUMATICO DOPPIO EFFETTO / PNEUMATICAL DOUBLE ACTING



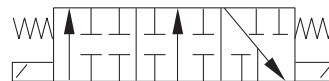
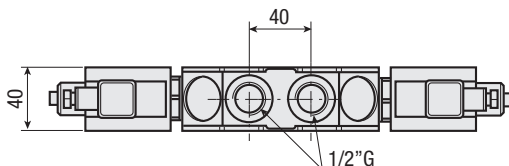
P = PNEUMATICO SEMPLICE EFFETTO / PNEUMATICAL SINGLE ACTING



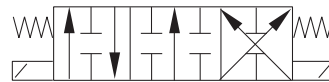
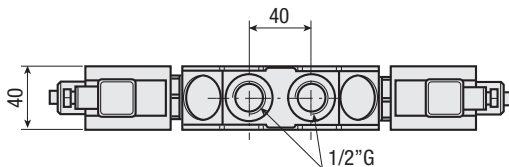
E = ELETTRICO DOPPIO EFFETTO 24 VOLT / ELECTRICAL DOUBLE ACTING 24 VOLT



H = ELETTRICO SEMPLICE EFFETTO 24 VOLT / ELECTRICAL SINGLE ACTING 24 VOLT



G = ELETTRICO DOPPIO EFFETTO 12 VOLT / ELECTRICAL DOUBLE ACTING 12 VOLT



M = ELETTRICO SEMPLICE EFFETTO 12 VOLT / ELECTRICAL SINGLE ACTING 12 VOLT

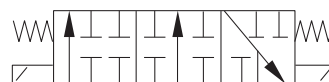
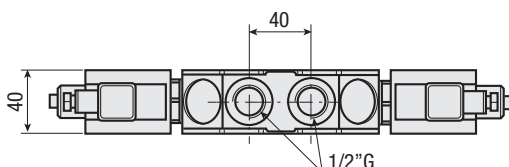




TABELLA TARATURE / SETTING TABLE

TARATURA DISTRIBUTORE / DISTRIBUTOR SETTING
bar

A = 100	B = 120	C = 130	D = 140
E = 150	F = 160	G = 170	H = 180
I = 190	J = 200	K = 210	L = 220
M = 230	N = 240	P = 250	Q = 260
R = 270	S = 280	T = 290	U = 300
V = 310	W = 320		
1 = 150/250		2 = 140/220	

ESEMPIO DI INSTALLAZIONE AL SERBATOIO / EXAMPLE FOR TANK INSTALLATION

