



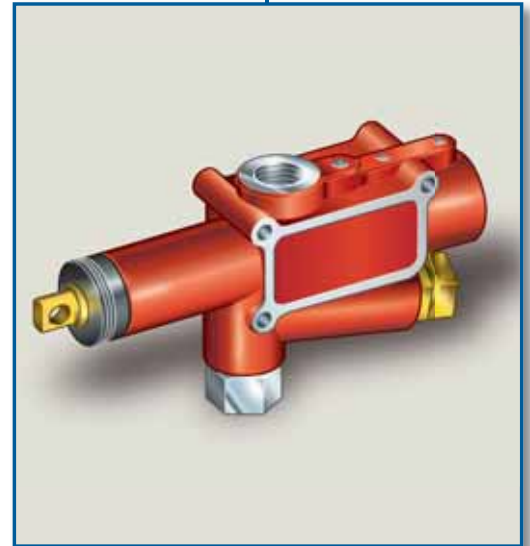
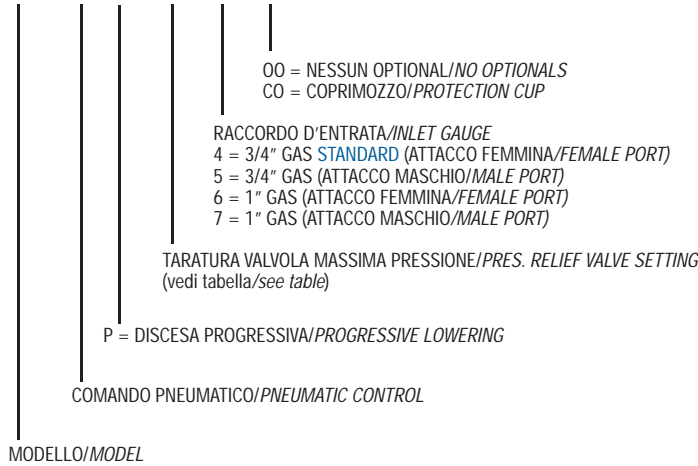
# DM 180-250

Distributore Idrraulico  
Hydraulic Distributor

CODICE DI ORDINAZIONE / ORDERING CODE

DM 180-250 P

D180 P P 08 4 00



TABELLA/TABLE

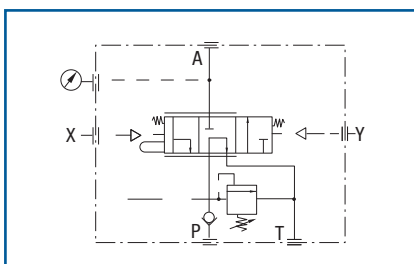
08 ÷ 35 MPa (80-350 bar) con valvola standard (regolabile)/with standard relief valve (adjustable)	D0 ÷ D9 con cartuccia regolabile da 10 a 19 MPa/with adjustable cartridge (from 10 to 19 Mpa)
2B con valvola pilotata a 2 livelli (stand. 140, 220 bar)/piloted relief valve with 2 settings	E0 ÷ E9 con cartuccia regolabile da 20 a 29 MPa/with adjustable cartridge (from 20 to 29 Mpa)
3B con valvola pilotata a 3 livelli (stand. 130, 220, 350 bar)/piloted relief valve with 3 settings	F0 ÷ F5 con cartuccia regolabile da 30 a 35 MPa/with adjustable cartridge (from 30 to 35 Mpa)
00 senza valvola (predisposto per cartuccia)/without relief valve (suitable for preset cartridge)	G0 cartuccia regolabile non tarata, non piombata/not setting, not plumbed adjustable cartridge

## CARATTERISTICHE TECNICHE / TECHNICAL SPECIFICATIONS

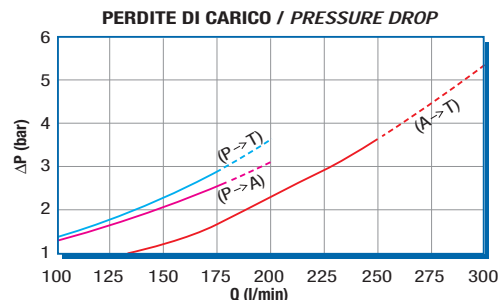
Portata nominale - Massima in ingresso Tipping nom. - Max flow rate	180-200 l/min	Temperatura fluido °C (t) Fluid temperature °C (t)	-25° + 80°C
Portata nominale - Massima in scarico Lowering nom. - Max flow rate	250-300 l/min	Campo viscosità Viscosity range	12-100 cSt
Pressione massima di lavoro Max working pressure	300 bar	Filtrazione/Filtering ISO 4406 βx=75	20/17 25 □m
Pressione massima di picco (<0.1 s) Max peak pressure	450 bar	Peso Weight	8-9 kg
Pressione massima sul T T port max pressure	30 bar	Pressione pneumatica massima Max pneumatic pressure	12 bar

- > Distributore da 180 l/min (salita) e 250 l/min (discesa), a comando pneumatico, per veicoli ribaltabili con sola motrice (cilindro semplice effetto).
- > Consente la salita, la discesa veloce e la discesa progressiva.
- > Sono incorporate di serie la valvola di ritegno in ingresso e la valvola di controllo pressione disponibile in 3 versioni: regolabile, a cartuccia pretarata intercambiabile, pilotata a 2 o 3 livelli di taratura.
- > Tirante per fine corsa meccanico di serie.
- > Flangiabile a serbatoio e a telaio.
- > Attacco manometro o pressostato di serie.

- > Coprimozzo a richiesta (vedi codifica).
- > Pneumatic controlled distributor, oil flow 180 l/min (tipping), and 250 l/min (lowering), for tippers without trailer (single-acting cylinder).
- > It performs tipping, fast and progressive lowering.
- > The inlet check valve and the relief valve are built-in.
- > Three models of relief valve are available: adjustable relief valve, interchangeable preset cartridge, piloted relief valve with 2 or 3 possible settings.
- > Standard end-of-stroke rope.
- > Flange connection to tank and chassis.
- > Standard pressure-switch or manometer connection.
- > Protection cup (ordering code).



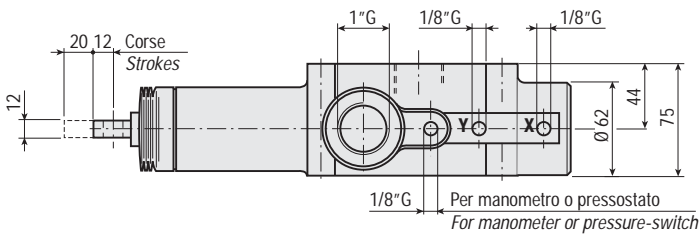
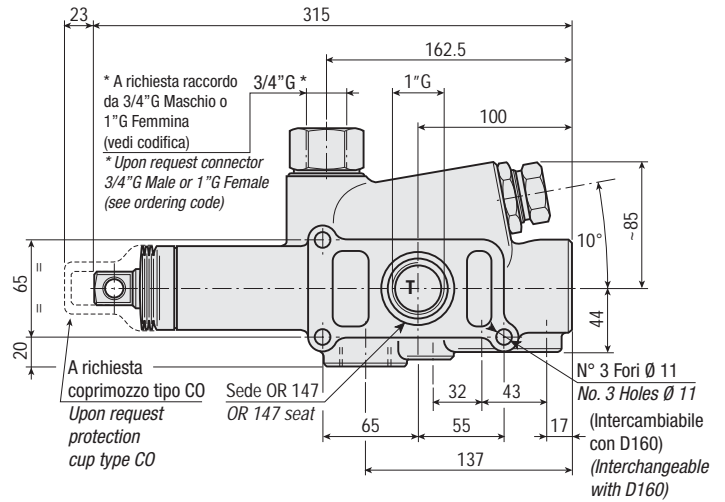
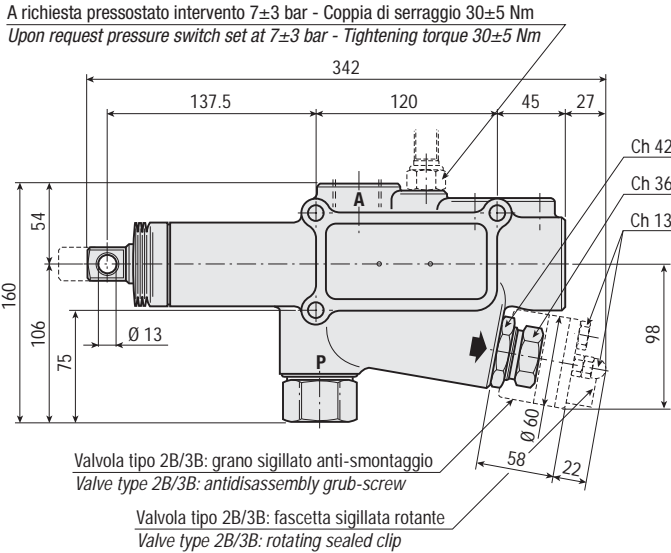
mod. DM 180-250 P



RILIEVI ESEGUITI CON OLIO ISO VG 46 A 50° C (ν = 30 cSt)  
THE ABOVE SPECIFICATIONS REFER TO OIL TYPE ISO VG 46 AT 50° C (ν = 30 cSt)

**VERSIONE STANDARD**  
**STANDARD VERSION**

mod. DM 180-250 P



**KIT PER FISSAGGIO AL SERBATOIO / TANK MOUNTING KIT**

DESCRIZIONE DESCRIPTION	CODICE CODE
Per serbatoio metallico senza piastra For steel tank without flange	30KDF02U000 (piastra $\neq 20$ mm) (plate $\neq 20$ mm)
	30KDF03U000 (piastra $\neq 30$ mm) (plate $\neq 30$ mm)
Per fissaggio a telaio To fit to chassis	30KDFDU0000

