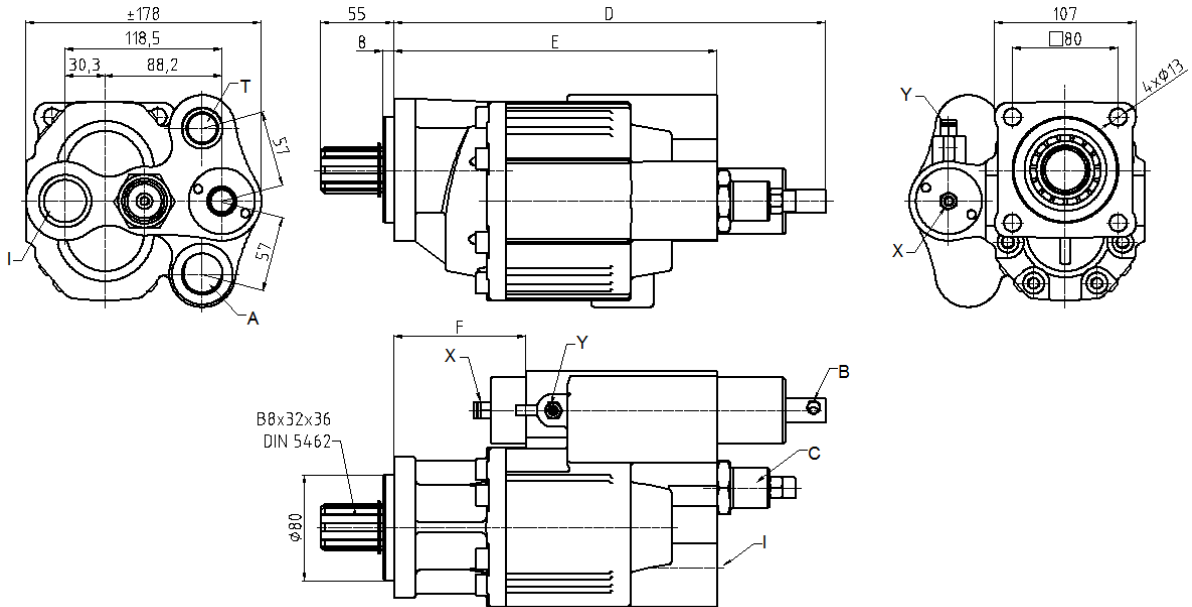




To apply with supported PTO's

Main Dimensions



- A – Cylinder 1" BSP
- B – Pull Stroke end
- C – Relief valve 200L (similar cartridge)
- I – Inlet 1"1/4 BSP
- T – Tank 1" BSP
- X – Descent 1/8" BSP
- Y – Ascent 1/8" BSP

(Dimensions in mm)

Main Data

Pump PV	82P	105P
Output at 1000 r.p.m (L)	82	105
Rotation Máx. (r.p.m)	1400	1400
Standard pressure (bar)	170	170
(at 210bar the valve sends all the flow to the tank)	210	210
D	312	327
E	230	245
F	85	100
Weight (kg)	20	22

CTI PV105P 0901 - 4

ABER is constantly engaged in improving its products and, therefore, reserves itself the right to modify without any further notice the characteristics shown





Diagram Flow / Speed

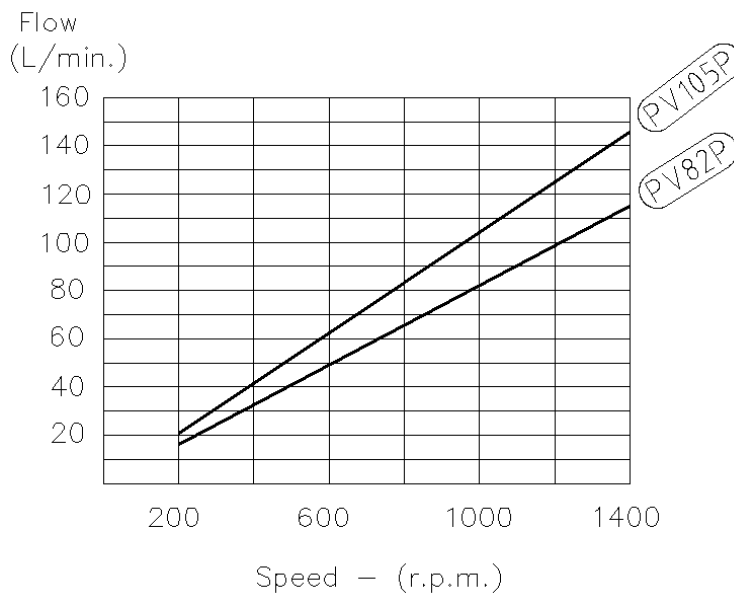
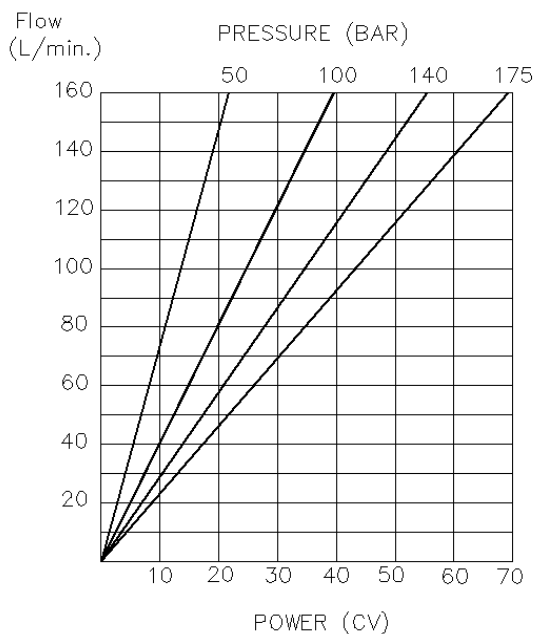


Diagram Input Power - Flow - Pressure amplitude



IMPORTANT NOTES:

- Used always return filters. We recommend filters with mesh equal to or lower than 25 μm
- Use a good quality mineral hydraulic-oil with viscosity at operating temperature between 20 and 46 cSt
- Fill the oil tank to 85% of its maximum capacity (the remainder 15% must not have oil)

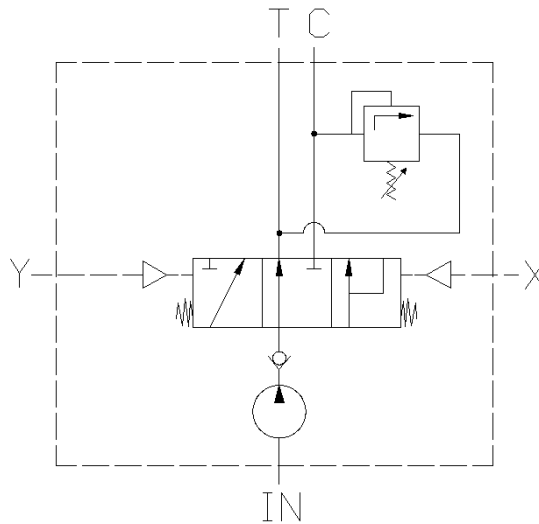
ABER is constantly engaged in improving its products and, therefore, reserves itself the right to modify without any further notice the characteristics shown

CTI PV105P 0901- 4

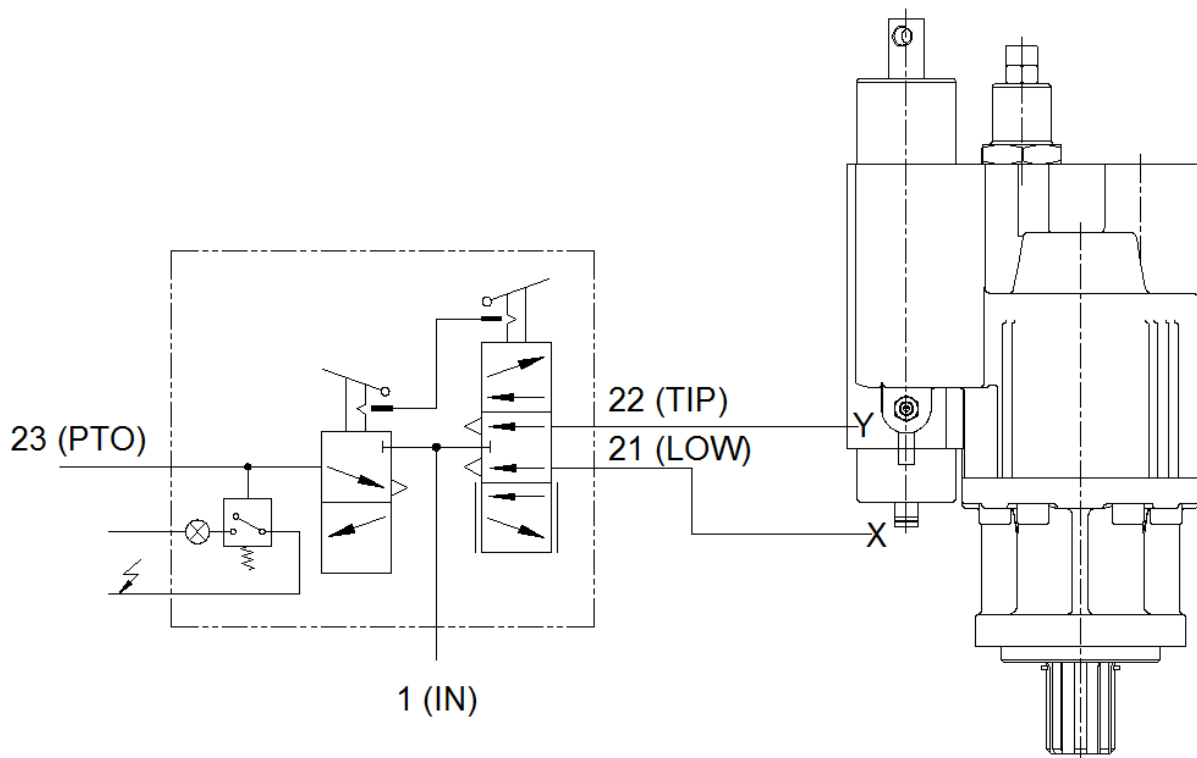




Hydraulic scheme



Pneumatic scheme



CTI PV105P_0901-4

ABER is constantly engaged in improving its products and, therefore, reserves itself the right to modify without any further notice the characteristics shown

