

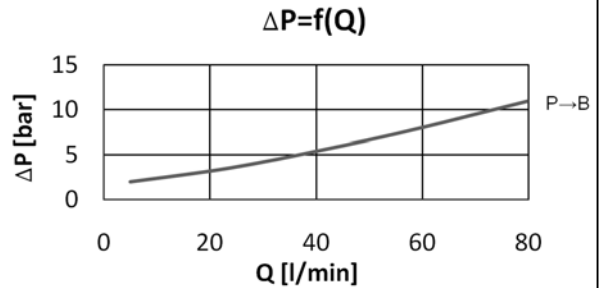
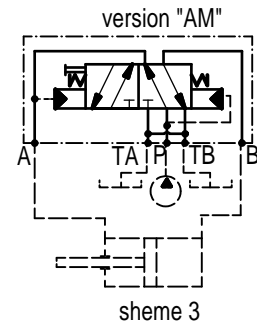
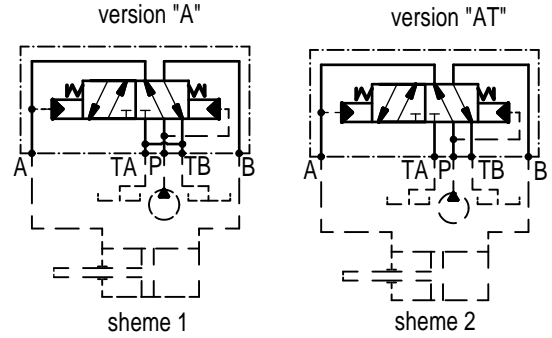
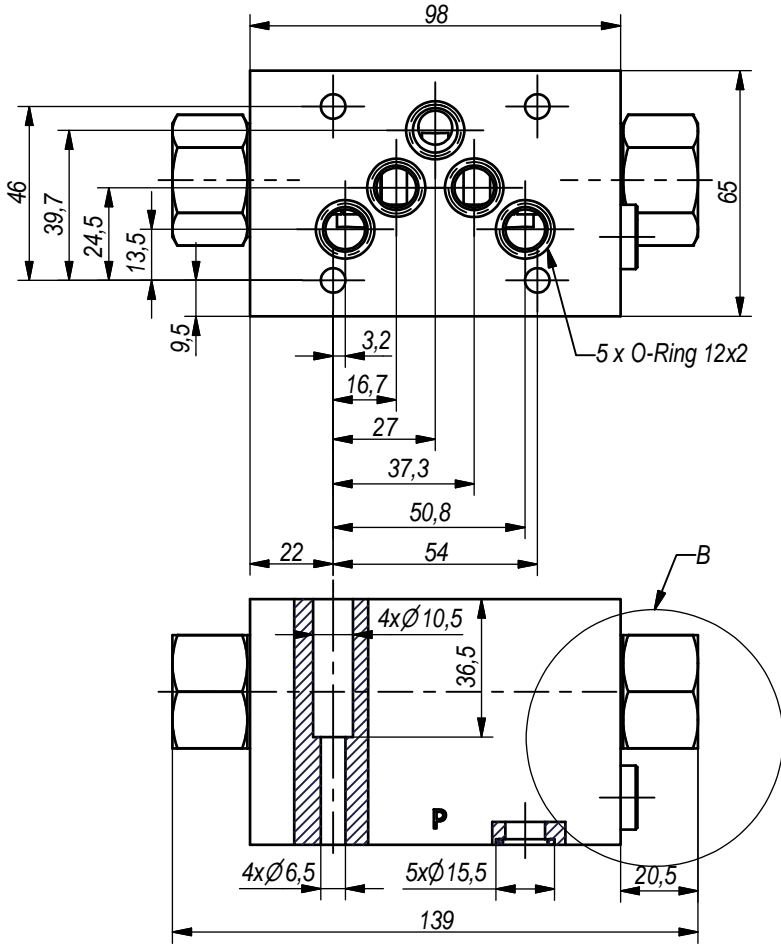


**Hidro  
Pnevmotekhnika**

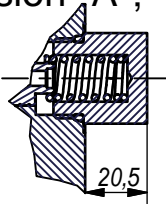
3, Vojeli St., Kazanlak, Bulgaria  
Tel.: +359 431/62 228  
Fax.: +359 431/62 019  
e-mail : info@hpt-bg.com  
www.hpt-bg.com

## HYDRAULIC DIRECTIONAL VALVE WITH AUTOMATIC SWITCHING

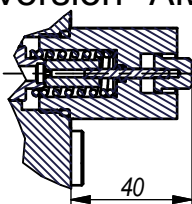
### 4/2 RHA10/20..



**B**  
version "A"; "AT"



**B**  
version "AM"



**Note:**

1. All performances and calibration are carried out by using hydraulic oil with viscosity approx 46 cSt at 50 °C.
2. Mounting plate:  
- acc. to ISO 4401-AB-05-4A (CETOP5)
3. Tightening torque of connecting screws on the mounting plate - 14 N.m.

TECHNICAL DATA		
General		
Ambient temperature	°C	-20...+50
Hydraulic		
Working pressure	bar	20...200
Flow rate	L/min	3...80
Working fluid – mineral oil		
- viscosity	mm <sup>2</sup> /s	10...100
- filtration level	µm	25 or better
- temperature	°C	-20...+80

### ORDERING CODE

**4/2 RHA10 / 20 A**

