



BIDIREZIONALE  
BI-ROTATIONAL

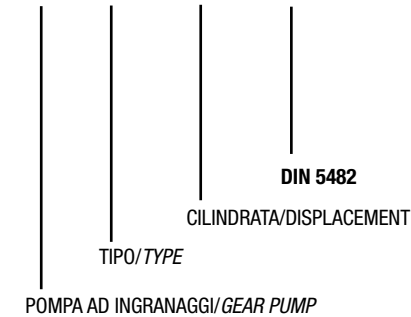


# BPS

**Pompa ad Ingranaggi**  
**Gear Pump**

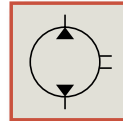
CODICE DI ORDINAZIONE / ORDERING CODE

200 BPS 011 0 0



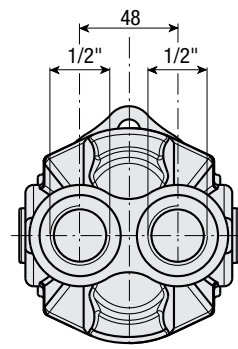
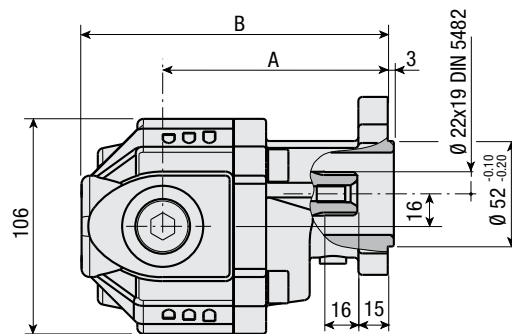
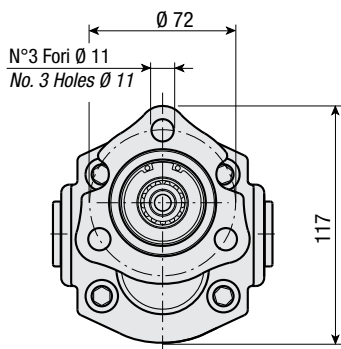
**DIN**  
5 4 8 2

- BPS 11
- BPS 16
- BPS 22
- BPS 28
- BPS 32



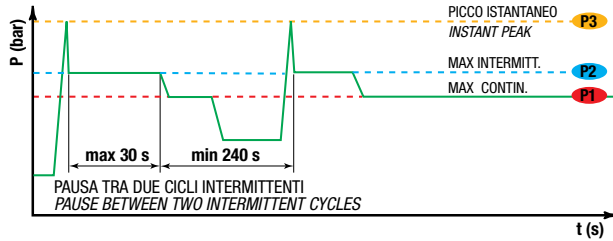
**CARATTERISTICHE E DATI TECNICI / SPECIFICATIONS AND TECHNICAL DATA**

TIPO TYPE	CODICE CODE	CILINDRATA DISPLACEMENT cm <sup>3</sup> /rev.	A mm	B mm	ASPIRAZIONE INLET	MANDATA OUTLET	PESO WEIGHT kg
BPS 11	200BPS01100	11.5	103.5	143.5	1/2" G	1/2" G	5.5
BPS 16	200BPS01600	16.4	111	151	1/2" G	1/2" G	5.85
BPS 22	200BPS02200	20.5	117.5	157.5	1/2" G	1/2" G	6.2
BPS 28	200BPS02800	28.6	111.3	170.3	3/4" G	3/4" G	6.6
BPS 32	200BPS03200	32.6	117.5	176.5	3/4" G	3/4" G	7



**DATI TECNICI / TECHNICAL DATA**

**ESEMPIO CICLI LAVORO / EXAMPLE OF WORKING CYCLES**



<b>Pressione d'aspirazione: Inlet pressure:</b>	0.7 ÷ 1.5 bar (assoluti/absolute)
<b>Campo viscosità lavoro: Operating viscosity range:</b>	12 ÷ 100 cSt
<b>Temperatura fluido °C (t): Fluid temperature °C (t):</b>	-10° + 80° C

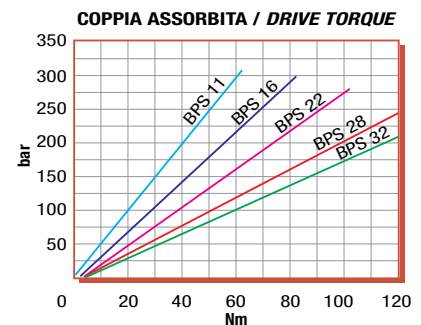
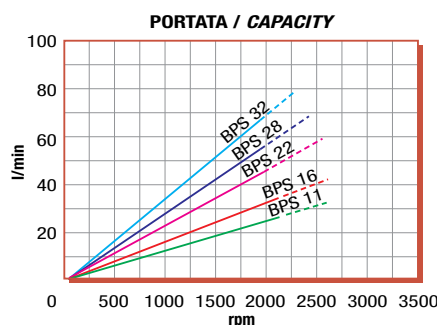
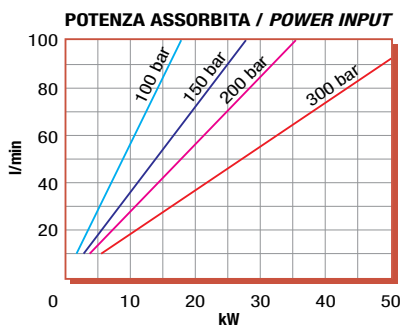
Pressione Lavoro Working Press. P2	Contaminazione / Contamination		Filtro / Filter βx = 75
	NAS 1638	ISO 4406	
≤ 200 bar	12	21/18	40 μm
≥ 200 bar	11	20/17	25 μm

**FILTRAZIONE CONSIGLIATA (ritorno o mandata)  
RECOMMENDED FILTERING (return or outlet)**

TIPO / TYPE			BPS11	BPS16	BPS22	BPS28	BPS32
	Vg	cm <sup>3</sup> /n cm <sup>3</sup> /rev.	11.5	16.4	20.5	28.7	32.6
Pressione massima continua Max continuous operating pressure	P1	bar	280	280	260	220	190
Pressione massima intermittente Max intermitt. operat. press.	(max 30 s) P2	bar	310	300	280	250	210
Pressione massima di picco Max peak pressure	(≤ 0.1 s) P3	bar	320	310	290	260	220
Velocità massima intermittente Max intermittent speed	(P ≤ 20 bar) n3	n/min r.p.m.	2700	2700	2700	2700	2700
Velocità massima continua Max continuous speed	(≤ P1) n1	n/min r.p.m.	2200	2200	2000	2000	2000
Velocità minima intermittente Min intermittent speed	(≤ P2 x 0.5) (max 30 s) n4	n/min r.p.m.	450	450	450	450	450

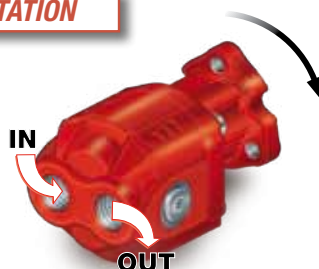
**DIAGRAMMI / DIAGRAMS**

RILIEVI ESEGUITI CON OLIO ISO VG 46 A 50° C (ν = 30 cSt)  
THE ABOVE SPECIFICATIONS REFER TO OIL TYPE ISO VG 46 AT 50° C (ν = 30 cSt)



**ROTAZIONE POMPA / PUMP ROTATION**

**SINISTRA  
ANTI-CLOCKWISE**



**DESTRA  
CLOCKWISE**

