

DAB 2

KED

Pompa DAB 2 + Distributore Elettrico
DAB 2 Pump + Electric Tipping Valve Group

CODICE DI ORDINAZIONE / ORDERING CODE

KED2 0 10 **D** 13 1

1 = 12 V DC
2 = 24 V DC

TARATURA VALVOLA MASSIMA PRESS.
PRES. RELIEF VALVE SETTING
13 MPa (130 bar) STANDARD

ROTAZIONE/ROTATION
D = DESTRO/CLOCKWISE
S = SINISTRO/ANTICLOCKWISE

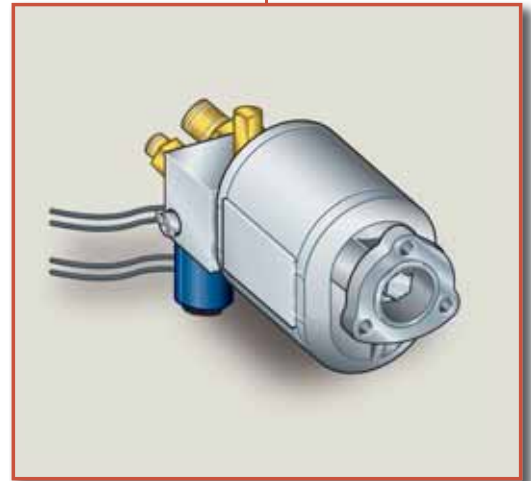
CILINDRATA POMPA/PUMP DISPLACEMENT

VERSIONI/VERSIONS

TIPO/TYPE

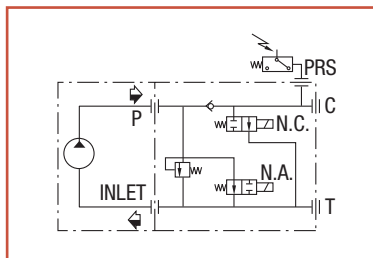
DIN
5 4 8 2

KED 2 10
KED 2 15
KED 2 25

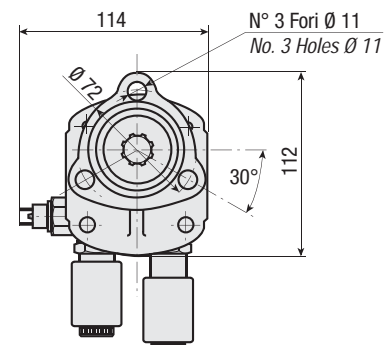
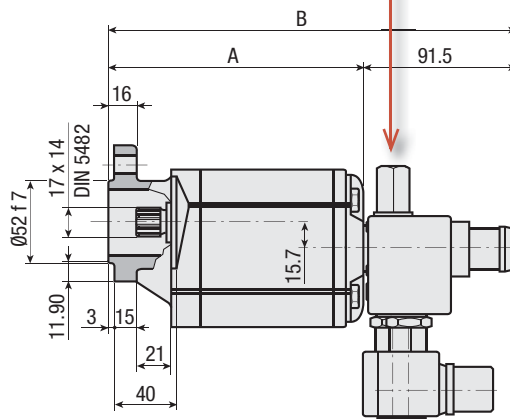
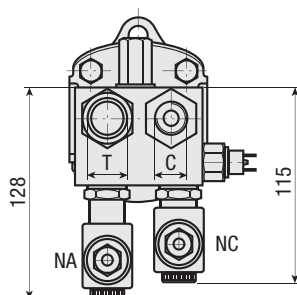


CARATTERISTICHE E DATI TECNICI / SPECIFICATIONS AND TECHNICAL DATA

TIPO TYPE	CODICE CODE	A mm	B mm	T ASPIRAZIONE INLET	C MANDATA OUTLET	PESO WEIGHT kg
KED 2 10	KED2010 D S 13 1 2	139	230.5	Ø 26	1/2" G	4.2
KED 2 15	KED2015 D S 13 1 2	148	239.5	Ø 26	1/2" G	4.5
KED 2 25	KED2025 D S 13 1 2	164.5	256	Ø 26	1/2" G	4.7



ATTENZIONE: Evitare di far intervenire la valvola di massima pressione per un periodo prolungato 10 s in quanto il riscaldamento potrebbe provocare danni alla pompa.
WARNING: Avoid relief valve insertion time longer than (≥ 10 s) since overheating might damage the pump.





Portata massima Flow max	25 l/min	Temperatura fluido °C (t): Fluid temperature °C (t):	-25° + 80°C
Campo viscosità Viscosity range	12-100 cSt	Fluido olio minerale Mineral oil	HLP (DIN 51525)

- > Gruppo distributore a comando elettrico integrato su pompa ad ingranaggi, per portata massima di 25 l/min.
- > Consente il comando di **salita** e **discesa** con ricircolo olio su mandata pompa in posizione di riposo.
- > La **valvola di massima pressione** è posizionata in P, la **valvola di ritegno** in C.

- > This group made of an **electrically operated tipping valve allowing raising and lowering independent control (12 and 24 volt) integrated with gear pump DAB2 is particularly suitable for tippers requiring oil flows up to 25 l/min in the idle position, oil flows goes directly from the pump into the suction line.**
- > **Check line valve is built in on the C line and relief valve on the P one.**

ESEMPIO DI INSTALLAZIONE / INSTALLATION DIAGRAM

