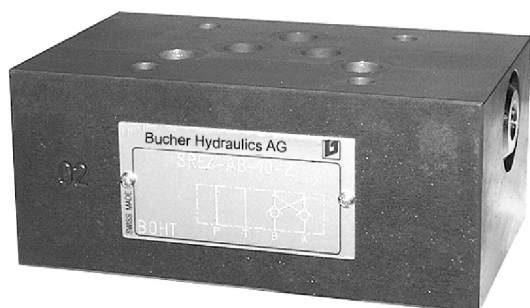


Modular-mounting Check Valve, 10 mm Pilot-operated Series SREZ ...



- 350 bar, 120 l/min
- Pilot-operated
- Closure of the service line(s) with near zero leakage
- With ISO 4401 / CETOP R35H size 5, NFPA D05, DIN 24 340 A10 interface

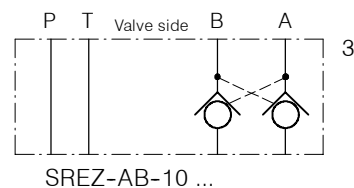
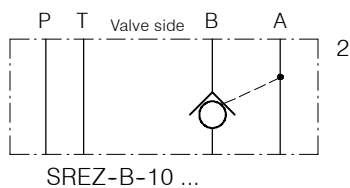
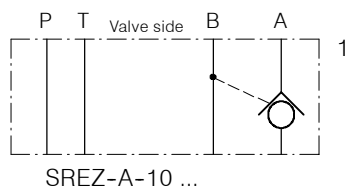
1. Description

These self-piloting modular check valves are designed for use in stacking assemblies. They ensure closure of the service line with near-zero leakage, and therefore block the effects of:

- external forces on the actuator
- various leakages across the directional valve. The directional valve used must connect both service lines A and B to tank T in its middle position (spool

type G) to ensure that the check valve pilot piston is fully unloaded. O-rings partially recessed in counterbores ensure effective hydraulic sealing at the lower valve interface.

2. Symbols

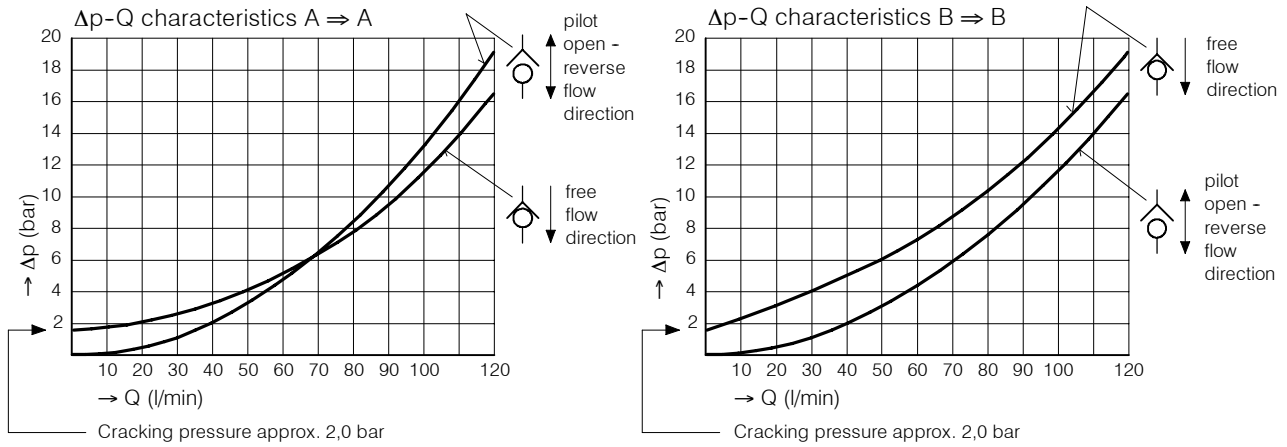


3. Main characteristics

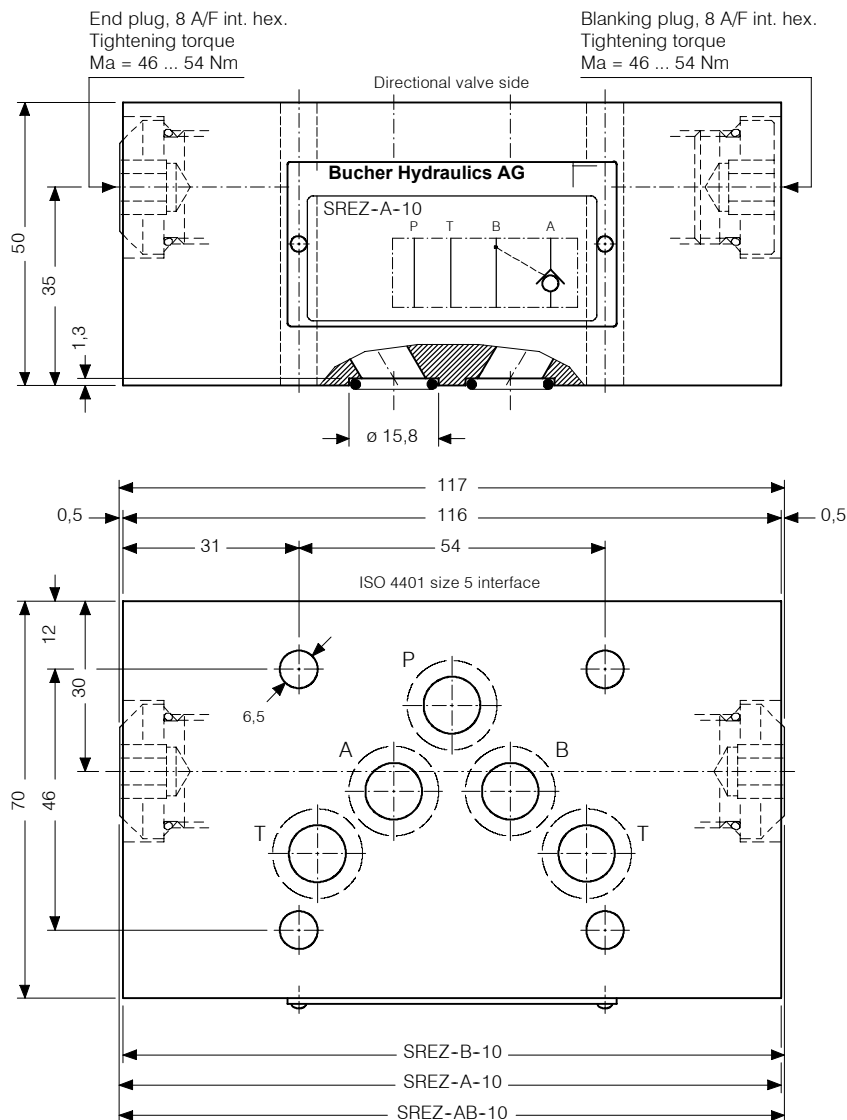
Designation		pilot-operated check valve
Design		dual poppet / seat construction
Mounting method		modular mounting design (sandwich)
Size		ISO 4401 size 05 interface, nominal 10 mm
Weight	kg	3,10
Mounting attitude		unrestricted, but see symbol plate
Flow direction		see symbol
Operating pressure range	bar	... 350 in P, A, B and T
Cracking pressure (approx.)	bar	2,0, see Δp -Q curves
Area ratio		1 : 6
Flow rate, Qmax	l/min	120, see Δp -Q curves
Fluids		HL and HLP hydraulic oils to DIN 51 524; for other fluids, please consult BUCHER
Fluid temperature range	°C	-25 ... +80
Ambient temperature	°C	-25 ... +80
Viscosity range	mm ² /s (cSt)	10 ... 650, recommended 15 ... 250
Minimum fluid cleanliness level		18/14 to ISO 4406 / CETOP RP70H; 8 ... 9 to NAS 1638

4. Performance graphs

Measured with oil viscosity 33 mm²/s (cSt)



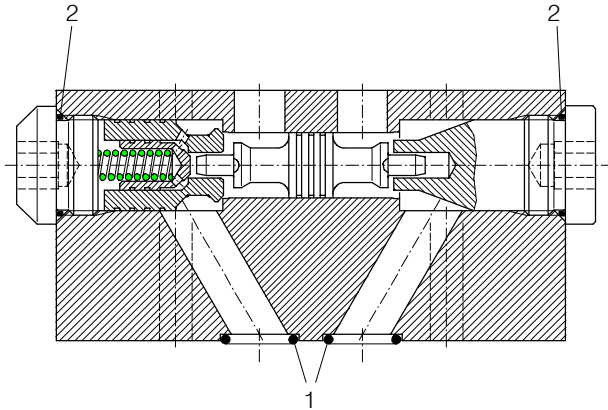
5. Dimensions



6. Schematic section

showing the relevant ports

Ex. SREZ-A-10



Seal kit no. DS-033, comprising:

Itm.	Qty.	Description	Size
1	2	O-ring no. 017	Ø 17,17 x 1,78 N90
2	5	O-ring no. 014	Ø 12,42 x 1,78 N90

7. Installation and servicing

All installation and servicing must be carried out with care, and by qualified personnel only. At installation, be sure to mount the valve the correct way up.

Do not confuse the flat surface (directional valve side) and the surface with O-ring counterbores (actuator side). When changing seals, the new seals

should be thoroughly oiled or greased before fitting them to the valve. Use the correct tightening torque when fitting the end plug and the blanking plug.

8. Ordering code

Ex. S R E Z - A - 10 - _ - 1

- S = Modular-mounting design (sandwich)
- R = check valve
- E = pilot-operated
- A ... Q = standard-model per current data sheet
- Z = standard-model per current data sheet
- Y ... R = special features per arrangement
- A = check function in A
- B = check function in B
- AB = check function in A und B
- 10 = ISO 4401 size 5 interface (nominal 10 mm)
- (Blank) = Nitrile seals (standard)
- V = Viton-Dichtungen
- Special seals by arrangement
- 1 ... 9 = design number (omit when ordering new units)

9. Related data sheets

Old no.	New no.	
i-41	400-P-050101-E	DIN 24 340 A10 interface

info.ch@bucherhydraulics.com

www.bucherhydraulics.com

© 2015 by Bucher Hydraulics AG Frutigen, CH-3714 Frutigen

All rights reserved.

Data is provided for the purpose of product description only, and must not be construed as warranted characteristics in the legal sense. The information does not relieve users from the duty of conducting their own evaluations and tests. Because the products are subject to continual improvement, we reserve the right to amend the product specifications contained in this catalogue.