

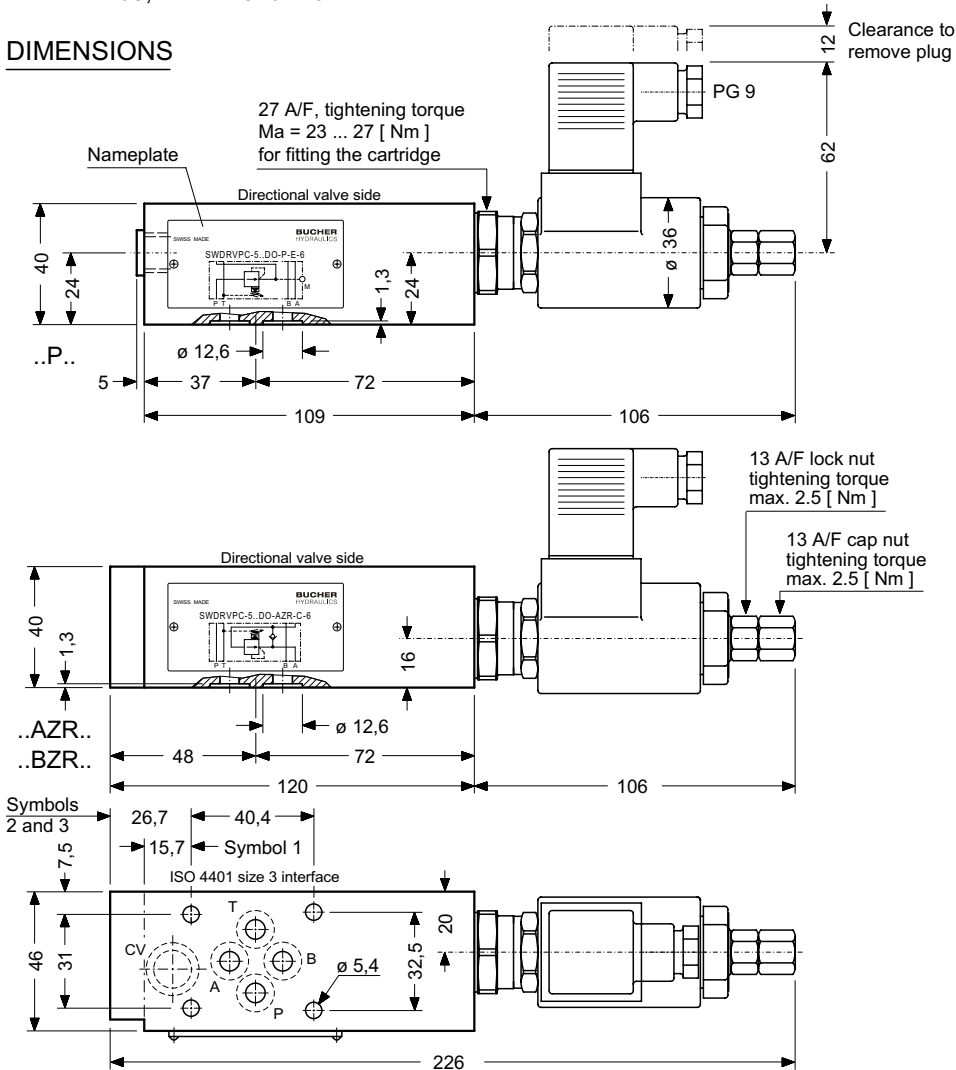
D-9.50 a

**Stacking Pressure Reducing Valve, size 3
Solenoid Controlled
with integral Bypass Check Valve
Seated pilot Stage, Sliding Spool Main Stage**

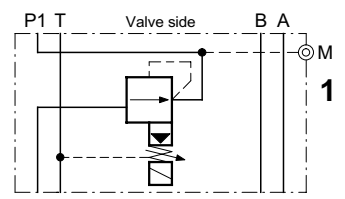
Series SWDRVPC ...
80 l/min, 315 bar

- With 2-stage, solenoid controlled 10 mm two-pressure cartridge type WDRVBP-5...DO-10 ... (see data sheet D-6.35)
- All ports rated for 80 l/min at 315 bar
- Internal pilot oil drain to T
- Coil rotatable 360°
- ISO 4401 I CETOP R35H size 03 NFPA D03, DIN 24 340 A6

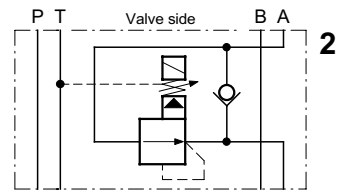
DIMENSIONS



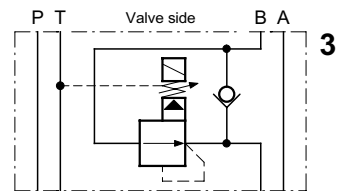
SYMBOLS



SWDRVPC-5..DO-P-E-6 ...



SWDRVPC-5..DO-AZR-C-6 ...



SWDRVPC-5..DO-BZR-D-6 ...

DESCRIPTION

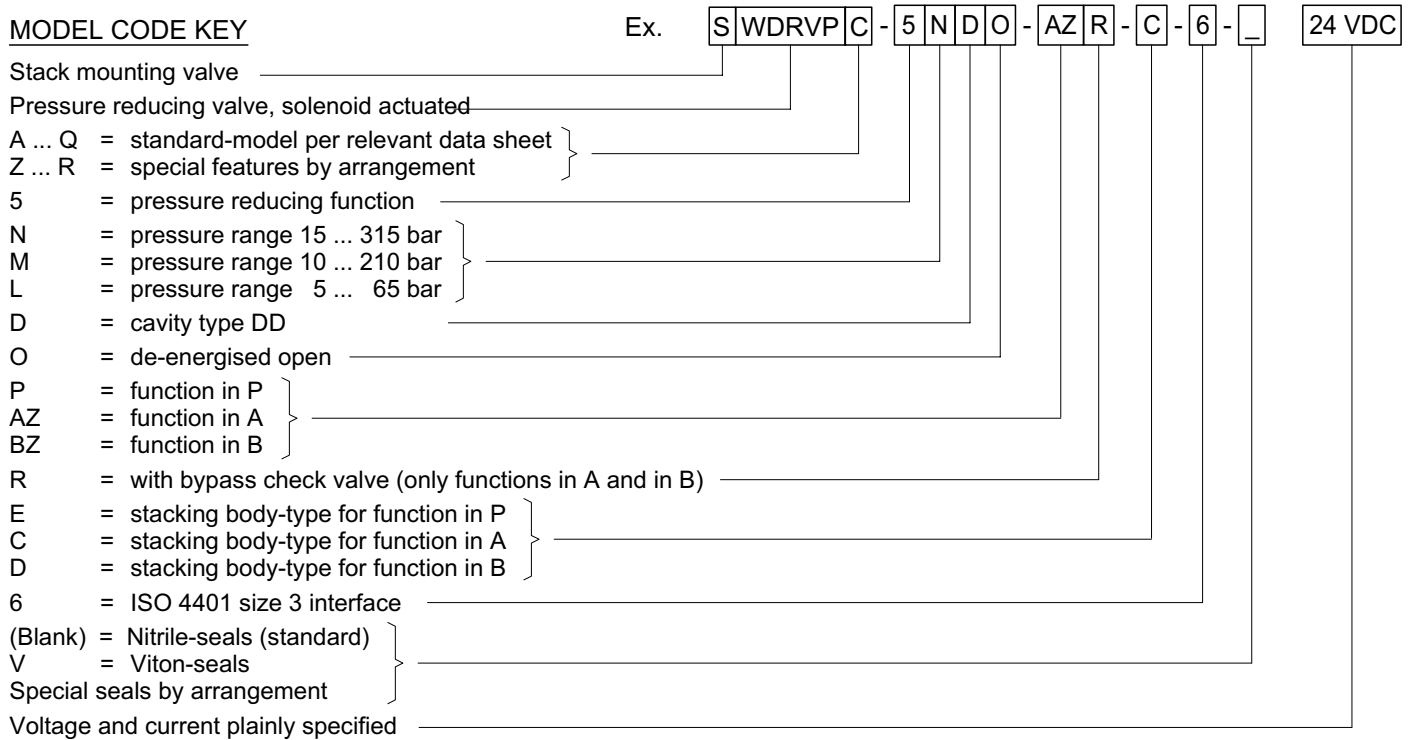
Series SWDRVPC-...-6 ... stack mounting units are used as pressure reducing valves in the P-, A- or B-line. They are equipped with the series WDRVBP-5 ...-10 ... 2-stage pressure reducing cartridge valve, detailed in data sheet D-6.35, and pilot oil is drained internally to port T. While the pressure in P1 (A1, B1) remains below the valve setting, the connection P - P1 (A - A1 / B - B1) remains fully open. As soon as the pres-

sure in P1 (A1, B1) rises above the setting, the pressure reducing function becomes active. The control spool holds the pressure in P1 (A1, B1) constant, regardless of the higher primary pressure at P (A, B). Pilot flow occurs only while the reducing function is active and is approximately 300 cm³/min. Model SWDRVPC-5..DO-P..6 is provided with a G 1/4" gauge connection on the secondary pressure side.

The integral bypass check valve in models SWDRVPC-5..DO-AZR-C-6... and SWDRVPC-5..DO-BZR-D-6... allows reverse flow from A1 to A, or B1 to B.

The valve design features screw-in cartridges, this ensuring straightforward very user-friendly maintenance. Interface sealing is by means of O-rings that are fitted in counterbores in the stacking body.

MODEL CODE KEY



RELATED DATA SHEETS

Old no.	New no.	
i - 00	400-P-010'101-D-00	Table of interfaces equivalent
i - 31	400-P-030'501-D-00	DIN 24 340 size A6 interface
W - 2.141	400-P-120'110-D-00	Coils for solenoid operated cartridge valves
D-6.35	400-P-290'501-D-00	Pressure reducing cartridge, 10 mm, type WDRVPB ...