

Multi-circuit gauge isolator valve UOPF 6

p_{max} 35 MPa | WK 450 327



DATA SHEET - OPERATION MANUAL

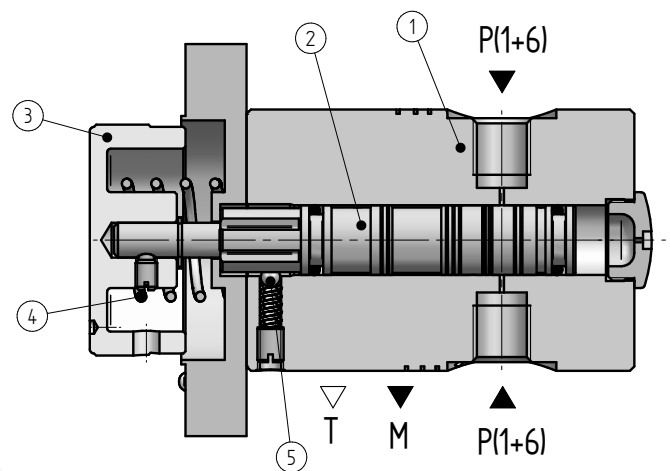
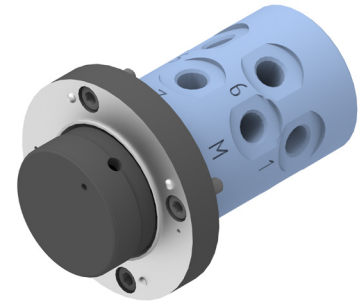
APPLICATION

Multi-circuit pressure gauge isolator valve type UOPF6... is used to measure pressure in 1 to 6 points using a single gauge.

DESCRIPTION OF OPERATION

The spool 2 moves in drilling of the housing 1 to connect the selected test points to the gauge. In the initial position, the knob 3 coupled with the spool is retracted by the spring 4 and the connection between the measuring points and the pressure gauge is cut off. The pressure gauge is thus unloaded and connected to the tank (port T).

Pressure indication is achieved by pressing the rotary knob in an axial direction, when the correct rotary position has been selected. The built-in locking mechanism 5 holds this position and the selected test point is connected to the gauge. Releasing the rotary knob returns the spool to its initial position and connects the pressure gauge to the tank. The selection of test points should be done in unloaded position. Pressure test in any circuit is not affected by pressure in other circuits.

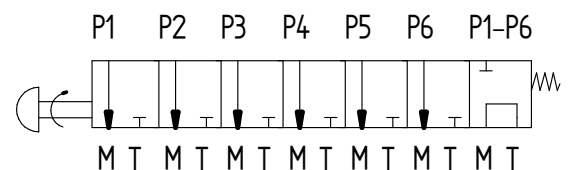


TECHNICAL PARAMETERS

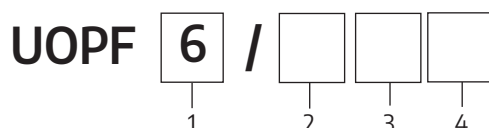
hydraulic fluid	mineral oil
required fluid cleanliness	ISO 4406 class 20/18/15
nominal fluid viscosity	37 mm ² /s at temperature 55 °C
viscosity range	2,8 ÷ 380 mm ² /s
fluid temperature range (in tank)	max. -20 ÷ 55 °C; recommended 40 ÷ 55 °C
ambient temperature range	-20 ÷ 70 °C
max. working pressure	35 MPa
test points	1 ÷ 6
weight	2,1 kg

assembly and operation requirements at www.operating-conditions.ponar.pl

HYDRAULIC DIAGRAM



HOW TO ORDER



1 isolator type

6 test points = 6

3 thread type

metric ISO thread = Ø
BSP thread = R

2 series number

series 12 = 12
(10-19) - connection and installation dimensions unchanged

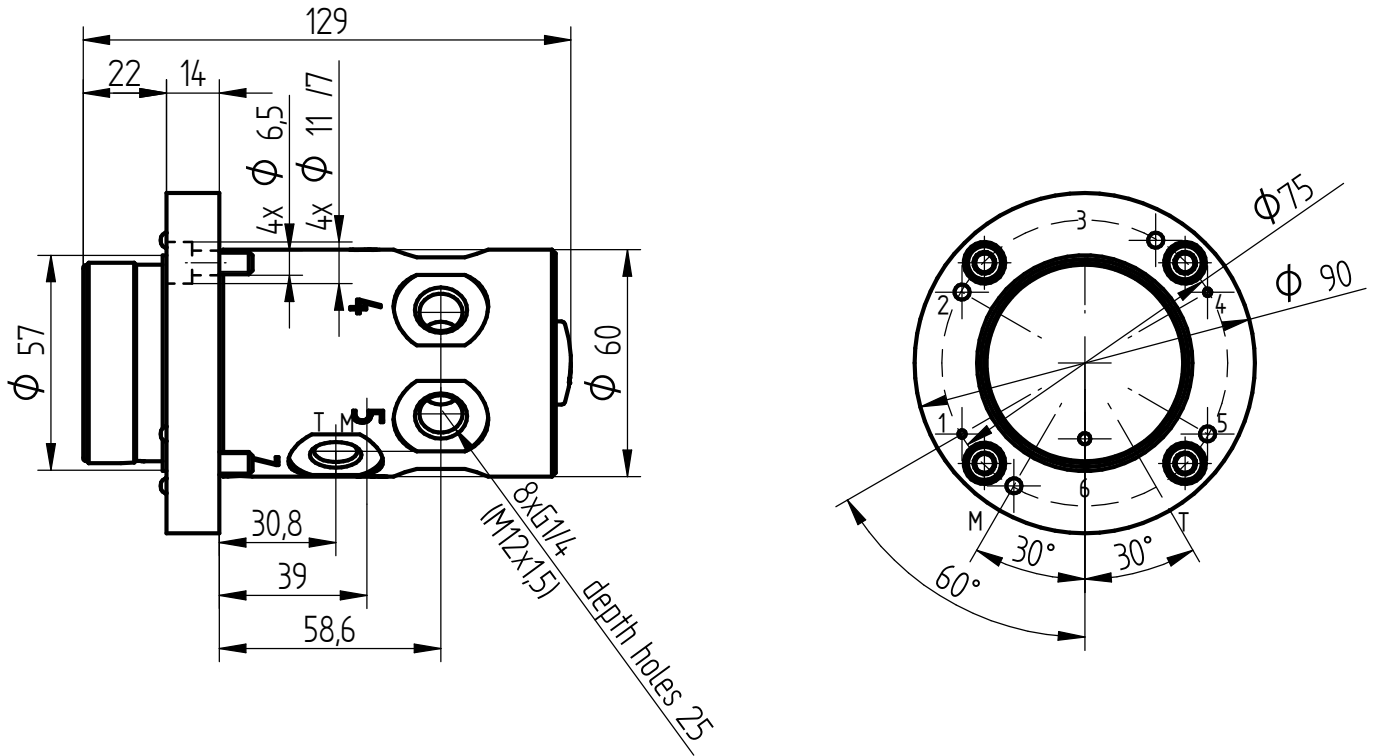
4 further requirements = *
(to be agreed upon with the Manufacturer)

Ø indicates that the box should be left blank.

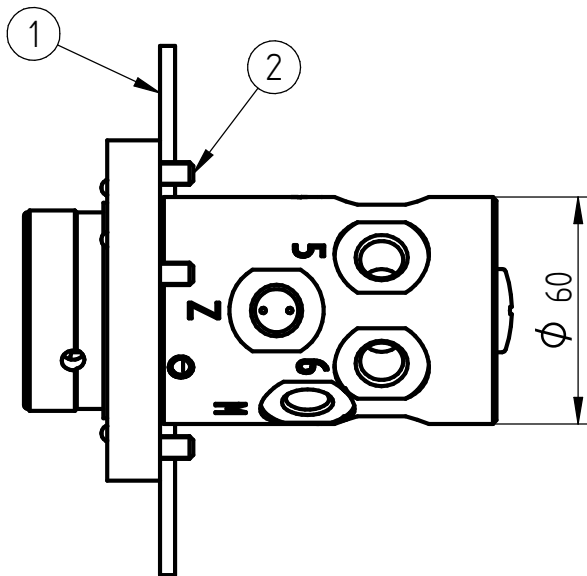
The symbols in bold are the preferred versions available in short delivery time.

Coding example: **UOPF6/12R**

OVERALL AND CONNECTION DIMENSIONS



INSTALLATION



1. mounting plate
2. screw M6 x 12 - 5.8 4 pcs according to PN/M-82302 (DIN 912)

Mounting screws can be ordered separately.

CONTACT

PONAR Wadowice S.A.
ul. Wojska Polskiego 29
34-100 Wadowice

tel. +48 33 488 21 00
www.ponar-wadowice.pl