

# Rectifier sandwich plate type UZFC 10

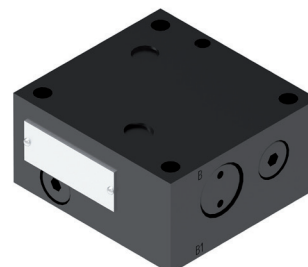
NS 10 |  $p_{max}$  35 MPa |  $Q_{max}$  50 dm<sup>3</sup>/min | WK 491 930



## DATA SHEET - OPERATION MANUAL

### APPLICATION

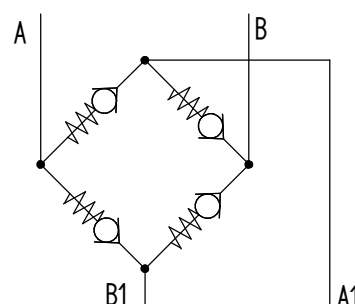
Rectifier sandwich plate type **UZFC10...** is used to set fluid flow direction on outlet from **A** to **B** independent of supply direction on inlet **A1**; **B1**. The plate is mounted under flow control valve type **2FRM10...** according to data sheet **WK 450 570**.



### TECHNICAL PARAMETERS

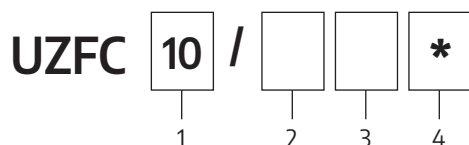
hydraulic fluid	mineral oil
required oil cleanliness class	<b>ISO 4406 class 20/18/15</b>
nominal fluid viscosity	37 mm <sup>2</sup> /s at temperature 55°C
viscosity range	2,8 ÷ 380 mm <sup>2</sup> /s
fluid temperature range (in the tank)	rec.: 40 ÷ 55°C; max. -20 ÷ +70°C
ambient temperature range	-20 ÷ 70°C
max. working pressure	35 MPa
check valves cracking pressure	0,15 MPa
weight	3,9 kg

### HYDRAULIC DIAGRAM



assembly and operation requirements at: [www.operating-conditions.ponar.pl](http://www.operating-conditions.ponar.pl)

### HOW TO ORDER



#### 1 nominal size (NS)

NS10 = 10

#### 2 series number

series 23 = 23  
(20-29) installation and connection dimensions unchanged

#### 3 sealing

**NBR** (for fluids on mineral oil base) = Ø  
**FKM** (for fluids on phosphate ester base) = V

#### 4 further requirements = \*

(to be agreed upon with the Manufacturer)

Ø indicates that the box should be left blank. The **symbols in bold** are the preferred versions available in short delivery time.

Coding example: **UZFC-10/23**

### SUBPLATES

Subplates must be ordered in accordance to the type of the subplate, taking into consideration dimensions of threaded connections according to data sheet **WK 470 011**:

**G 279/01** - threaded connections G 1/2

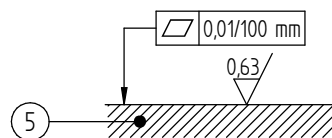
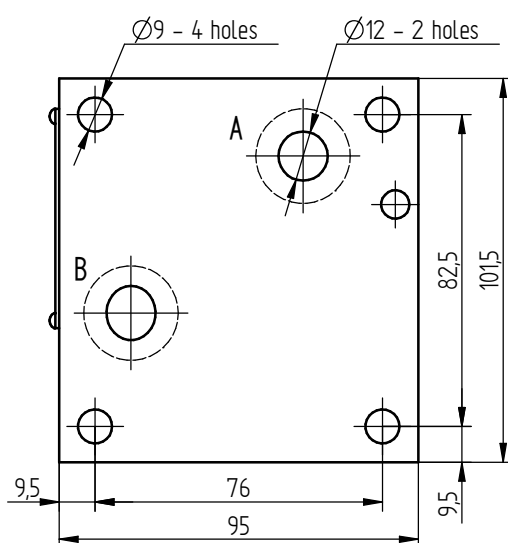
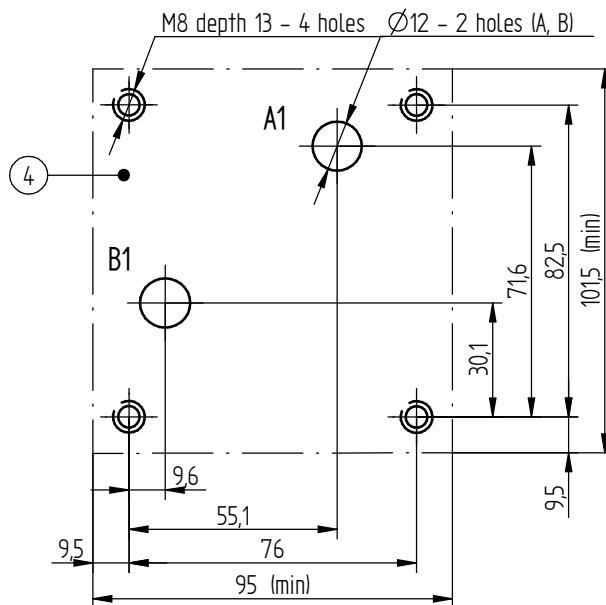
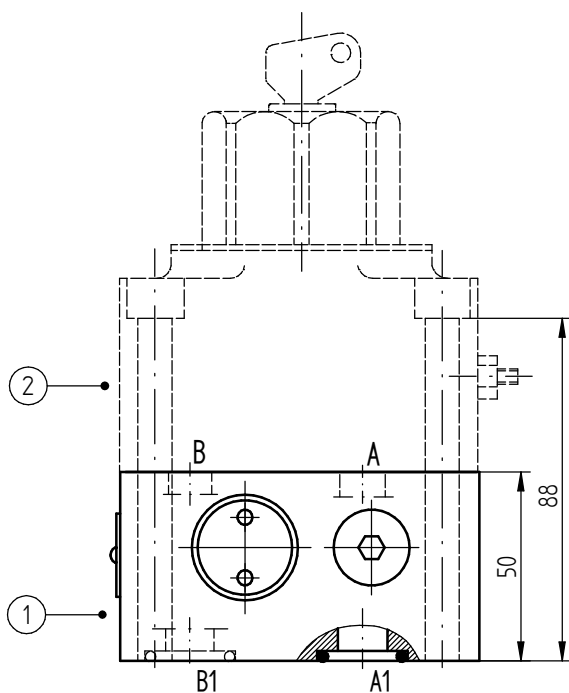
**G 280/01** - threaded connections G 3/4

### MOUNTING SCREWS:

For mounting rectifier sandwich plate **UZFC10...** and flow control valve **2FRM10...**:

**M8 x 100 - 10,9** acc. to **PN - EN ISO 4762** (PN/M-82302) 4 pcs/set **delivered on separate order**.

Tightening torque of screws  $M_d = 35 \text{ Nm}$ .



1. rectifier sandwich plate type **UZFC10**...
2. flow control valve **2FRM10** type acc. to data sheet **WK 450 570**
3. o-ring **18,7 × 3,5** - 2 pcs/set (**A1, B1**)
4. porting pattern of the subplate compliant with standards:
  - **ISO 6263**
  - **CETOP RP 121H**
5. required surface quality of the valve contact surface

## CONTACT

PONAR Wadowice S.A.  
 ul. Wojska Polskiego 29  
 34-100 Wadowice

tel. +48 33 488 21 00  
[www.ponar-wadowice.pl](http://www.ponar-wadowice.pl)