

Rectifier sandwich plate type UZFC 16

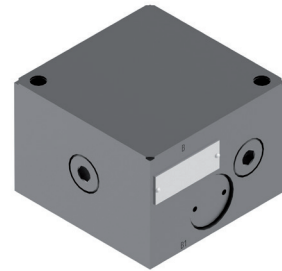
NS 16 | p_{max} 35 MPa | Q_{max} 160 dm³/min | WK 491 940



DATA SHEET - OPERATION MANUAL

APPLICATION

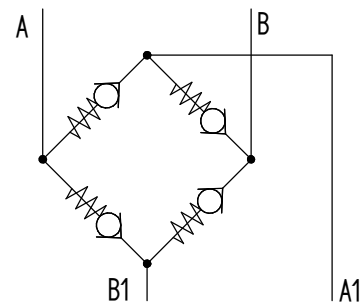
Rectifier sandwich plate type **UZFC16...** is used to set fluid flow direction on outlet from **A** to **B** independent of supply direction on inlet **A1**; **B1**. The plate is mounted under flow control valve type **2FRM16...** according to data sheet **WK 450 570**.



TECHNICAL PARAMETERS

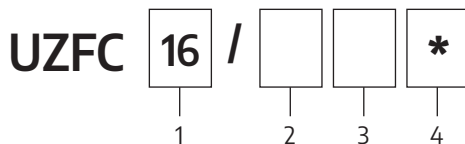
hydraulic fluid	mineral oil
required oil cleanliness class	ISO 4406 class 20/18/15
nominal fluid viscosity	37 mm ² /s at temperature 55°C
viscosity range	2,8 ÷ 380 mm ² /s
fluid temperature range (in the tank)	rec.: 40 ÷ 55°C; max. -20 ÷ +70°C
ambient temperature range	-20 ÷ 70°C
max. working pressure	35 MPa
check valves cracking pressure	0,15 MPa
weight	3,9 kg

HYDRAULIC DIAGRAM



assembly and operation requirements at: www.operating-conditions.ponar.pl

HOW TO ORDER



1 nominal size (NS)

NS16 = 16

2 series number

series 23 = 23
(20-29) connection and installation dimensions unchanged

3 sealing

NBR (for fluids on mineral oil base) = Ø
FKM (for fluids on phosphate ester base) = V

4 further requirements = *

(to be agreed upon with the Manufacturer)

Ø indicates that the box should be left blank. The **symbols in bold** are the preferred versions available in short delivery time.

coding example: **UZFC-16/23**

SUBPLATES

Subplates must be ordered in accordance to the type of the subplate, taking into consideration dimensions of threaded connections according to data sheet **WK 450 795**:

G 281/01 - threaded connections G 1

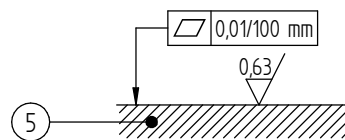
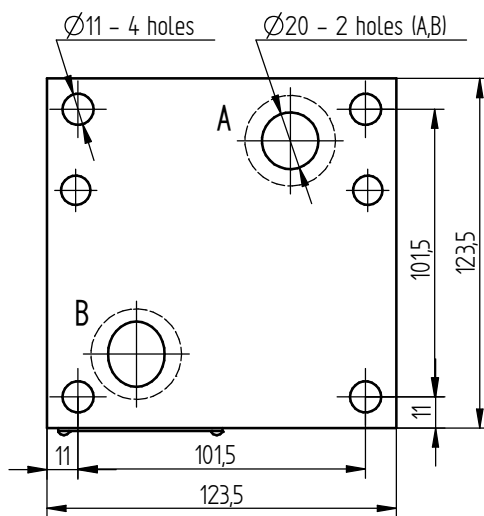
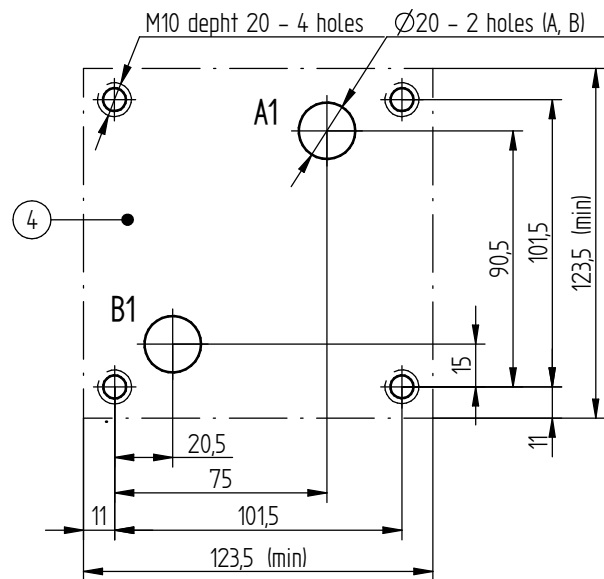
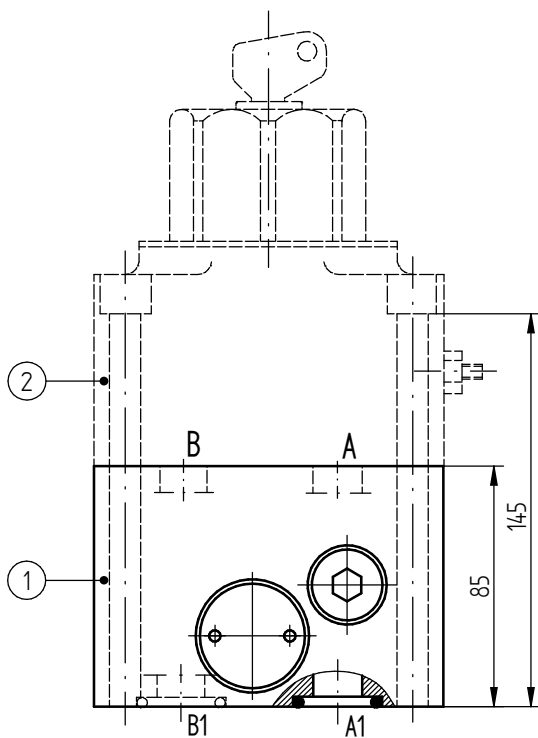
G 282/01 - threaded connections G 1 ¼

MOUNTING SCREWS

For mounting rectifier sandwich plate **UZFC16...** and flow control valve **2FRM16...**:

M10 x 160 - 10,9 acc. to **PN - EN ISO 4762 (PN/M-82302)** 4 pcs/set delivered on separate order.

Tightening torque of screws: $M_d = 75 \text{ Nm}$.



1. rectifier sandwich plate type **UZFC16...**
2. flow control valve **2FRM16** type acc. to data sheet **WK 450 570**
3. o-ring **26,6 × 3,5** - 2 pcs/set (**A1, B1**)
4. porting pattern of the subplate compliant with standards:
 - **ISO 6263**
 - **CETOP RP 121H**
5. required surface quality of the valve contact surface

CONTACT

PONAR Wadowice S.A.
 ul. Wojska Polskiego 29
 34-100 Wadowice

tel. +48 33 488 21 00
 www.ponar-wadowice.pl