

Rectifier sandwich plate type UZFC 5

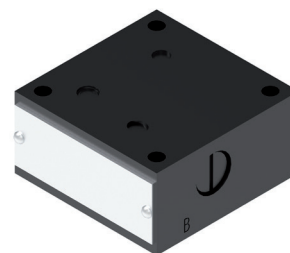
NS 5 | p_{max} 35 MPa | Q_{max} 15 dm³/min | WK 491 920



DATA SHEET - OPERATION MANUAL

APPLICATION

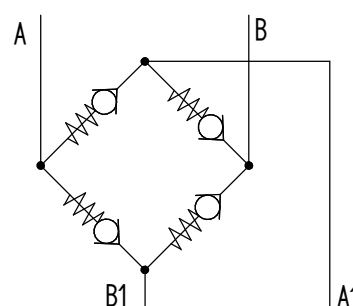
Rectifier sandwich plate type **UZFC5...** is used to set flow direction on outlet from **A** to **B** independent of supply direction on inlet **A1**, **B1**. The plate is mounted under flow control valve type **2FRM5** and has the same porting pattern.



TECHNICAL PARAMETERS

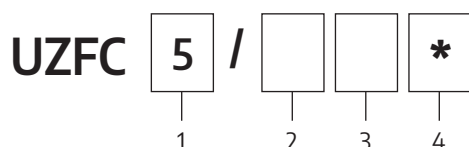
hydraulic fluid	mineral oil
required oil cleanliness class	ISO 4406 class 20/18/15
nominal fluid viscosity	37 mm ² /s at temperature 55°C
viscosity range	2,8 ÷ 380 mm ² /s
fluid temperature range (in the tank)	rec.: 40 ÷ 55°C; max. -20 ÷ +70°C
ambient temperature range	-20 ÷ 70°C
max. working pressure	35 MPa
check valves cracking pressure	0,1 MPa
weight	~0,6 kg

HYDRAULIC DIAGRAM



assembly and operation requirements at: www.operating-conditions.ponar.pl

HOW TO ORDER



1 nominal size (NS)

NS5 = 5

2 series number

series 22 = 22
(20-29) - installation and connection dimensions unchanged

3 sealing

NBR (for fluids on mineral oil base) = Ø
FKM (for fluids on phosphate ester base) = V

4 further requirements = *

(to be agreed upon with the Manufacturer)

Ø indicates that the box should be left blank. The **symbols in bold** are the preferred versions available in short delivery time.

Coding example: **UZFC-5/22**

SUBPLATES

Subplates must be ordered in accordance to the type of the subplate according to data sheet **WK 470 012**:

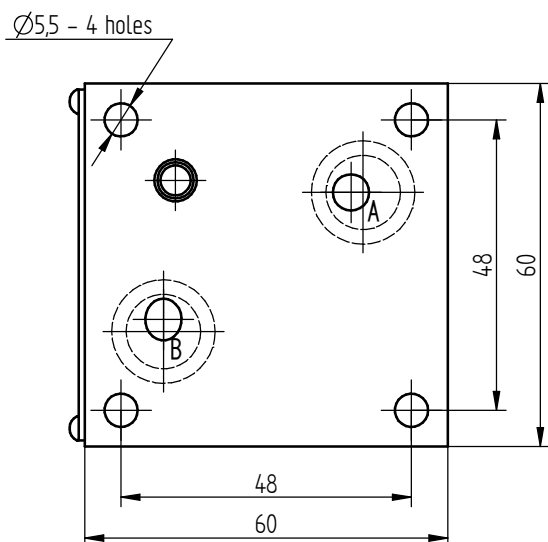
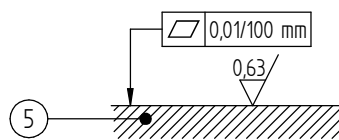
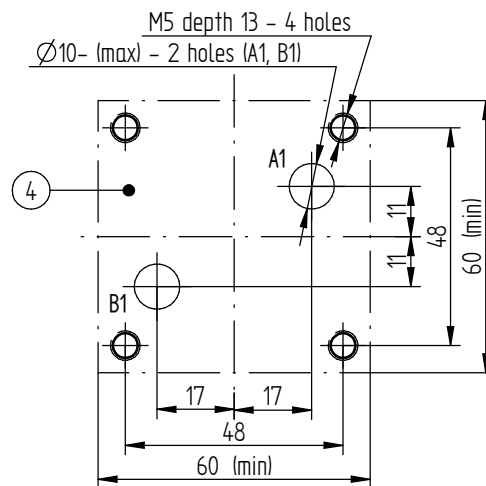
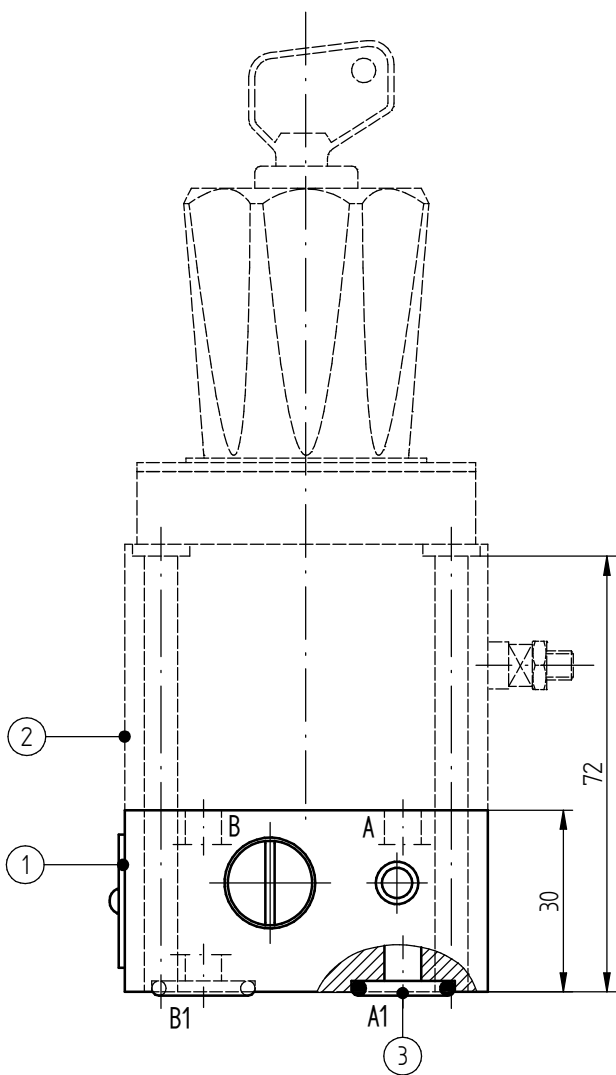
G45/01 - threaded connections **G½**

MOUNTING SCREWS

For mounting rectifier sandwich plate **UZFC5...** and flow control valve **2FRM5...**:

M5 × 80 – 10.9 acc. to **PN-74/M-82302 (DIN 912)** – 4 pcs/set **delivered on separate order.**

Tightening torque of screws **M_d = 6 Nm.**



1. rectifier sandwich plate type **UZFC5...**
2. flow control valve **2FRM5** type acc. to data sheet **WK 146 937**
3. o-ring **12,3 × 2,4** - 2 pcs/set (**A1, B1**)
4. porting pattern of the subplate
5. required surface quality of the valve contact surface

CONTACT

PONAR Wadowice S.A.
 ul. Wojska Polskiego 29
 34-100 Wadowice

tel. +48 33 488 21 00
 www.ponar-wadowice.pl